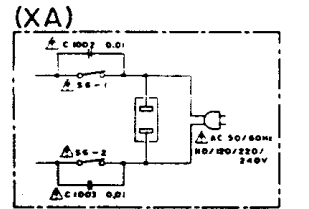
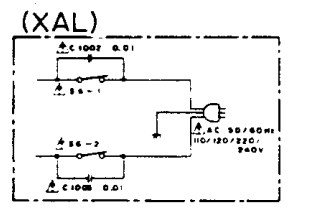
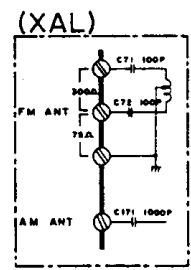
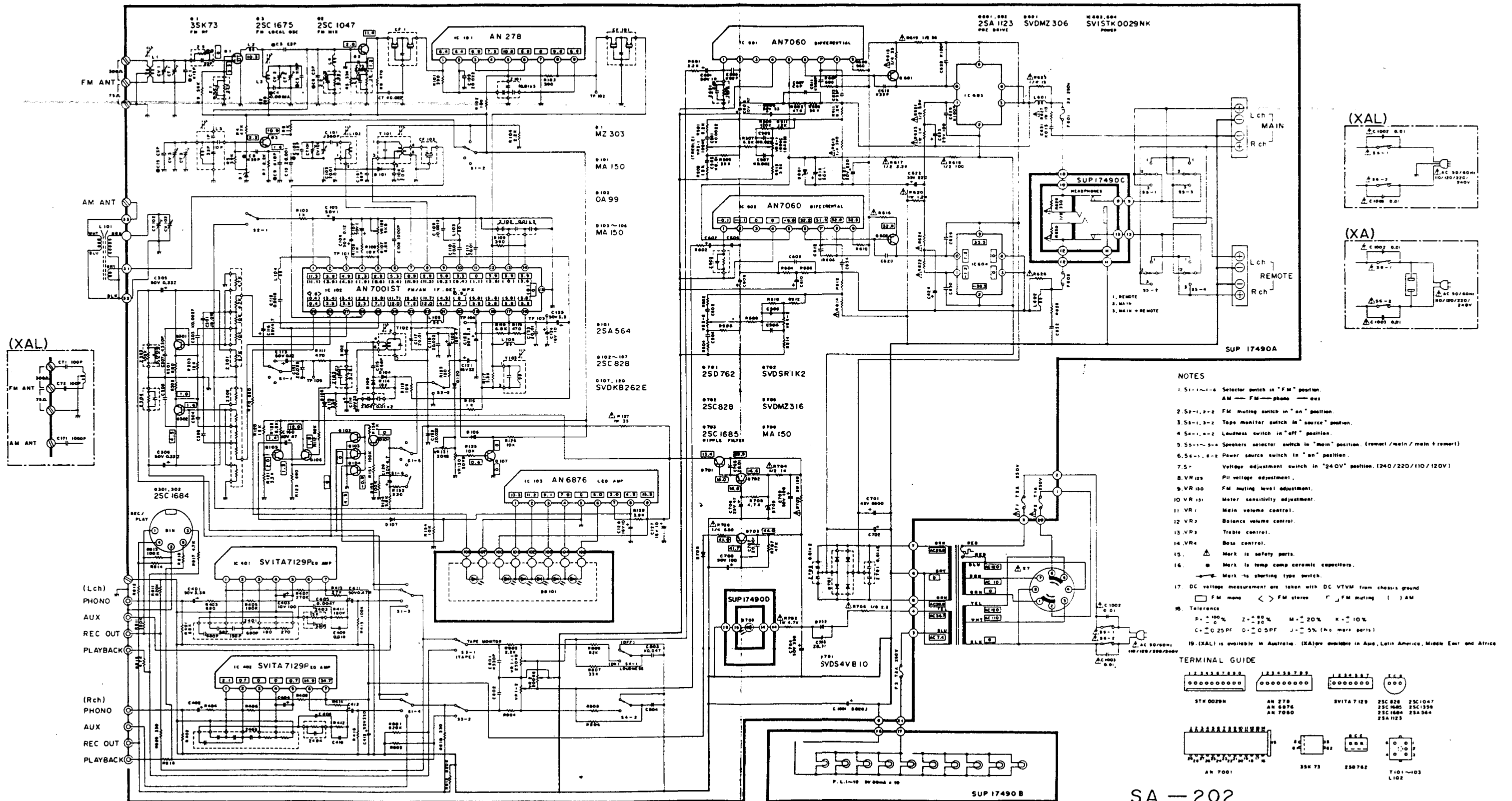
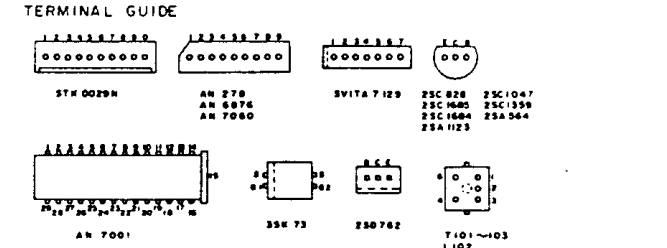


# Schematic Diagram... Model SA-202 (This schematic diagram may be modified at any time with the development of new technology.)



- NOTES**
- 5.1-1, 2-2 Selector switch in "FM" position.  
AM — FM — phono — aux
  - 5.2-1, 2-2 FM muting switch in "on" position.
  - 5.3-1, 2-2 Tone monitor switch in "source" position.
  - 5.4-1, 2-2 Loudness switch in "off" position.
  - 5.5-1, 2-4 Speakers selector switch in "main" position. (remote/main/main + remote)
  - 6.5-1, 2-2 Power source switch in "on" position.
  - 7.5- Voltage adjustment switch in "240V" position. (240/220/110/120V)
  - 8.VR125 Pll voltage adjustment.
  - 9.VR130 FM muting level adjustment.
  - 10.VR131 Meter sensitivity adjustment.
  - 11.VR1 Main volume control.
  - 12.VR2 Balance volume control.
  - 13.VR3 Treble control.
  - 14.VR4 Bass control.
  15. ⚠ Mark is safety parts.
  16. Ⓜ Mark is temp comp ceramic capacitors.  
⚡ Mark is shunting type switch.
  17. DC voltage measurement are taken with DC VTVM from chassis ground.  
□ FM mono < > FM stereo ◻ FM muting ( ) AM
  18. Tolerance  
P = 100% Z = 50% M = 20% K = 10%  
C = 0.25PF 0 = 0.5PF J = 5% (No mark parts)
  19. (XAL) is available in Australia. (XA) are available in Asia, Latin America, Middle East and Africa



SA — 202  
202K