

Inlet valve:

Connection 220/240V +6-15%; 50 Hz;
0,6 - 10 bar
Flowrate 8 L/min

Drain pump:

Connection 230V; 50 Hz; Synchron
Flowrate 22 L/min
Power 34W +30%
Resistance 164Ω +5/-5%

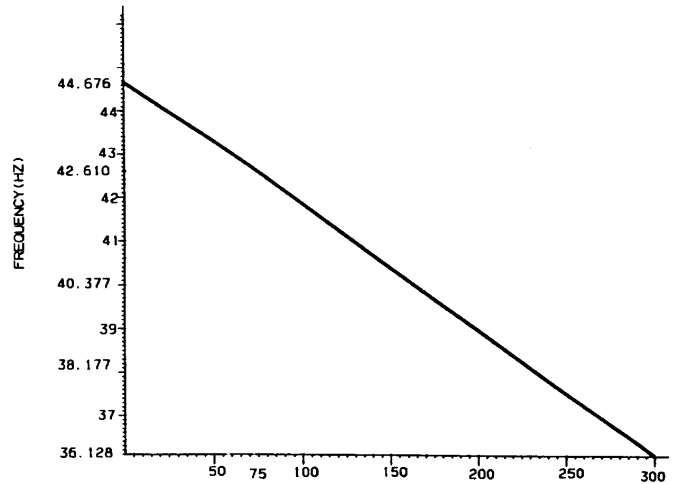
Heating element :

Connection 230V; 50 Hz;
Power 1950W
Fuse 10A

NTC Resistance f30:

°C	Ω
20	6050
60	1250
80	640

Pressure sensor:



PRESSURE (mm H2O)

PRESSURE (mm H2O)	FREQUENCY (Hz)
0	44.676
75	42.610
300	36.128

Motor:

1. Values (measurement):

Article number	Connection	Tacho	Rotor	Stator	Stator complete
124 309 801	230; 50Hz AC	184Ω +/-7%	1,82Ω +/-7%	0,47Ω +/-7%	1,3Ω +/-7%
124 309 900	230; 50Hz AC	135Ω +/-8%	1,75Ω +/-8%		1,12Ω +/-8%
124 391 000	230; 50Hz AC	135Ω +/-8%	1,49Ω +/-8%		1,09Ω +/-8%
124 536 100	230; 50Hz AC				
124 536 400	230; 50Hz AC				
124 306 100	230; 50Hz AC	135Ω +/-8%	1,68Ω +/-8%		1,9Ω +/-8%
		M3 - 4	M8 - 6	M5 - 1	M5 -10

2. Consumption:

Article number	124 309 801	124 309 900	124 391 000	110 536 100	110 536 400	124 306
Drum Speed 1/min	100					
Load	1300-1600	1000	1100-1200			1000
Washing	5 Kg	5 Kg	5 Kg			5Kg
Spinning:	220W		150W			200W
Feld complete						
Tapped field	380W		450W			350W
Currency	800W					
	6A max.		6A max.			6A max.

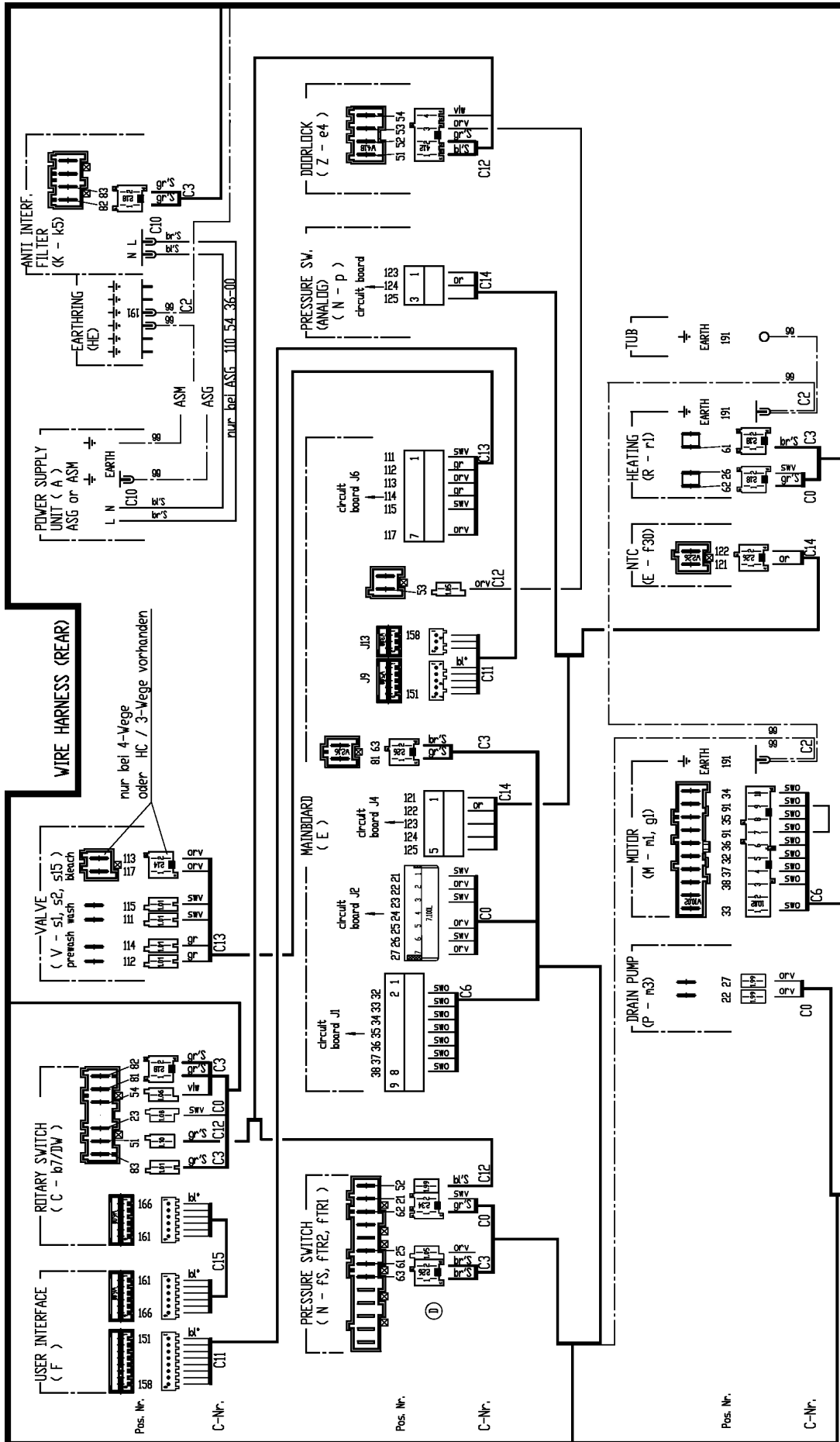
Service Manual: 599 500 754/8

Wiring plan

Washing machines

Nr.: 110 542 600

292 1400 19 b



CONNECTIONS single

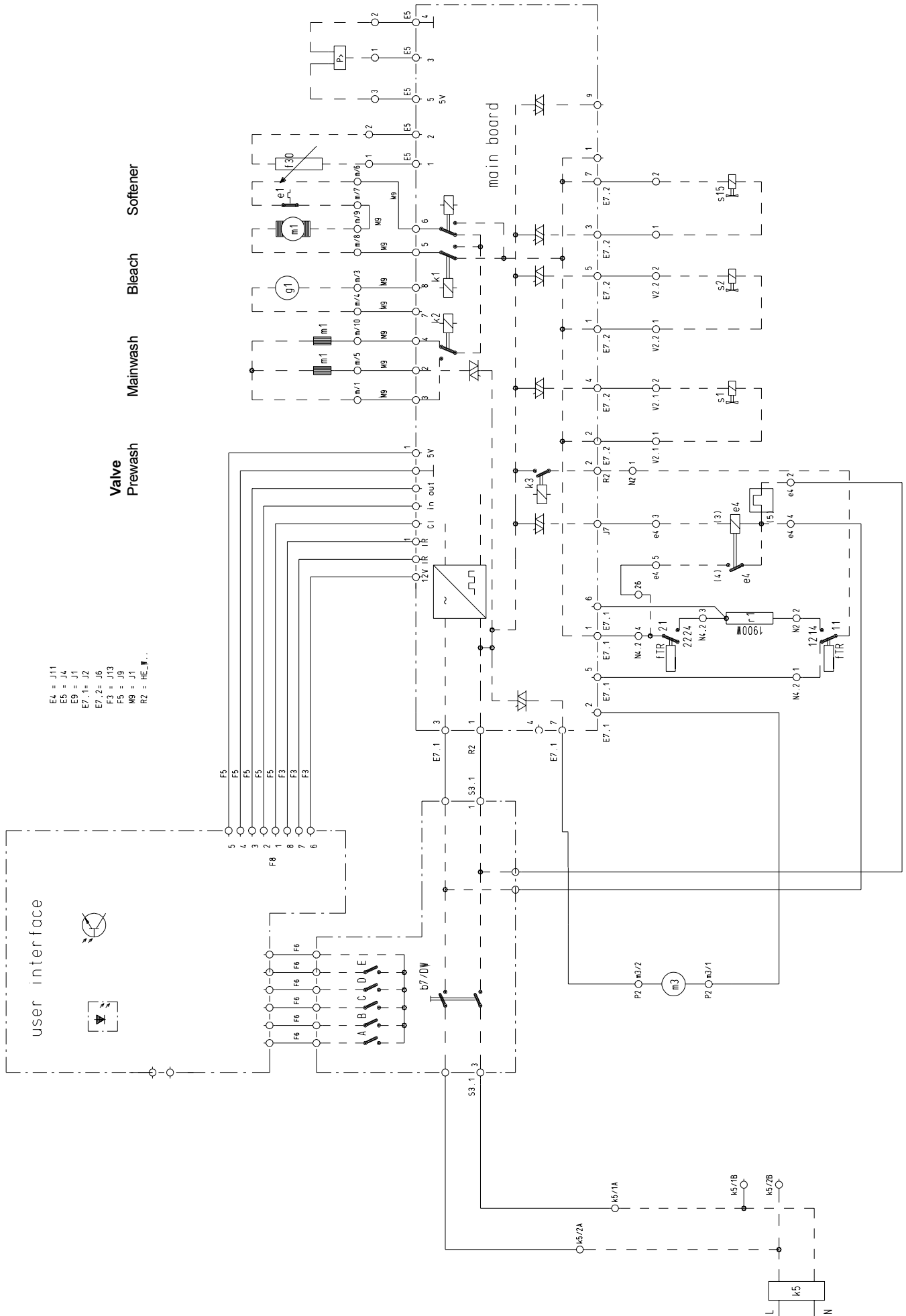
Wire harness (rear) 110 54 26-01	C-Nr. Title	Sach-Nr.	Bemerkung
C0	E7/NRCP 110 54 32-01	C10 ARK	110 54 36-00 nur bei ASG
C1		C11 FBE	110 51 81-00
C2	HEIMR 110 51 74-00	C12 Z3ECN 1	110 54 20-00
C3	NRPECK 110 54 21-00	C13 E7V 4	110 54 08-10 nur bei 4-Wege
C4		E7V 5	110 54 09-10 nur bei 3-Wege
C5		E7V 6	110 54 11-10 nur bei HC / 3-Wege
C6	E9M 110 51 64-10	C14 ESTN	110 54 37-00
		C15 F6C	110 51 98-00

Circuit diagram

Washing machines

Nr. 110 525 700

292 1400 19 c



Legend wiring plan

Short name	Description	Description in the wiring plan
A	Connection housing	
C	Selection switch	b7/DW
E	NTC - Sensor	f30
E	Main electronic	
F	In / Output electronic	S17
HE	Main earth	
K	Suppressor	k5
L	Floating switch	f16.1 ; f16.2
M	Motor	m1
N	Pressure switch	fs;fTR2;fTR1
N	Pressure sensor	p
P	Recirculation pump	m22
P	Pump	m3
R	Heating	r1
V	Valve	s1;s2;s15
Z	Door lock	e4

Legend circuit diagram

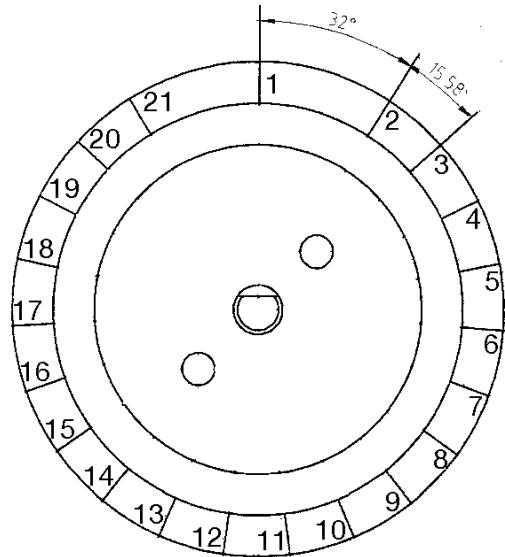
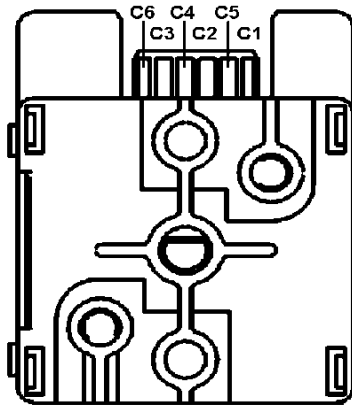
b7 / DW	Selection switch
e4	Door lock
E	Main electronic
f16.1 f16.2	Floating switch
f 30	NTC - Sensor
fS	Safety level
fTR1 ; fTR2	Boil-dry protection
g 1	Tacho generator
k1	Direction of drum movement
k2	Tapping / complete field (950 1/min / 650 1/min)
k 5	Suppressor
m 1	Main motor
m 3	Drain pump
m22	Recirculation pump
p	Pressure sensor
r1	Heating element
s1 s2 s15	Valve
s17	In / Output electronic

Program selection switch

Washing machines

Nr: 110 539 700

292 1400 19 e



	21	20	19	18	17	16	15	14	13	12	11	10	9	8	7	6	5	4	3	2	1		
C1						●	●	●	●		●			●	●								Common
C3	●				●		●	●	●	●		●					●		●			●	
C4		●					●	●		●	●		●	●		●	●	●				●	
C2			●		●	●							●				●	●	●	●	●	●	
C5				●	●		●		●		●	●	●			●					●	●	

Binary code					Display	Position	Program	°C
C1	C3	C4	C2	C5				
	⊙	⊙	⊙	⊙	0F	1	OFF	
			⊙	⊙	0C	2	Cotton	95°
	⊙		⊙		05	3	Cotton	E
		⊙	⊙		06	4	Cotton	60°
	⊙	⊙	⊙		07	5	Cotton	50°
		⊙		⊙	0A	6	Cotton	40°
⊙					10	7	Cotton	30°
⊙		⊙			12	8	Easy care	60°
		⊙	⊙	⊙	0E	9	Easy care	50°
	⊙			⊙	09	10	Easy care	40°
⊙		⊙		⊙	1A	11	Easy Iron	40°
	⊙	⊙			03	12	Delicate	40°
⊙	⊙			⊙	19	13	Delicate	30°
⊙	⊙	⊙			13	14	Hand wash	40°
⊙	⊙	⊙		⊙	1B	15	Hand wash	30°
⊙			⊙		14	16	Hand wash	0°
	⊙		⊙	⊙	0D	17	Delicate rinse	
				⊙	08	18	Starching	
			⊙		04	19	Pump	
		⊙			02	20	Spin	
	⊙				01	21	Delicate spin	