

S5 RELAY

SHORI

◆ Features

- 0.45W and 0.2W coil are available .
- Switching capacity relay for high density.
- Standard PC layout
- SPNO configuration.
- Sealed type available.



◆ Coil Data [at 20°C]

- Standard Type

Rated voltage (V)	Coil Resistance ±10% (Ω)	Rated Current ±10% (mA)	Pick up Voltage (Max)	Drop out Voltage (Min)	Max continuous Voltage	Power consumption At rated Voltage
3	20	150	75% of rated voltage	5% of rated voltage	160% Max of Rated voltage	Approx.0.45W
5	55.6	90				
6	80	75				
9	180	50				
12	320	37.5				
24	1280	18.8				

- High sensitivity Type

Rated voltage (V)	Coil Resistance ±10% (Ω)	Rated Current ±10% (mA)	Pick up Voltage (Max)	Drop out Voltage (Min)	Max continuous Voltage	Power consumption At rated Voltage
3	45	67	80% of rated voltage	5% of rated voltage	160% Max of Rated voltage	Approx.0.2W
5	125	40				
6	180	33.3				
9	405	22.2				
12	720	16.7				
24	2890	8.3				

◆ Contact Rating

TYPE	Standard type	High sensitivity
Resistive load	5A 250VAC, 5A 30VDC	5A 250VAC, 5A 30VDC

◆ Type List

Terminal style	Contact form	Type	Designation(provided with)
PCB terminal	1A (SPNO)	Standard type	S5-12-S
	1A (SPNO)	High sensitivity	S5-12B-S

◆ Ordering information

S5 - 12 B - AS

1 2 3 4

- 1. S5 -- Basic series designation
- 2. 12 -- Coil Voltage (3V~24V)
- 3. B -- High sensitivity.
Blank -- Standard type

- 4. AS -- Form A, normally open (SPNO),
Sealed type washable.
- CS -- Form C, Double-throw (SPDT)
Sealed type washable.

◆ Specification

Contact material	Ag Alloy	
Contact resistance	100 mΩ Max	
Operate time	10 ms Max	
Release time	5 ms Max	
Insulation resistance	100 MΩ Min. (DC 500V)	
Dielectric strength	Between open contact : AC 1000V ,50/60Hz 1 min.	
	Between contact and coil : AC 2500V, 50/60Hz 1 min.	
Vibration resistance	Operating extremes	10~50Hz, amplitude 1.0 mm
	Damage limits	10~50Hz, amplitude 1.0 mm
Shock resistance	Operating extremes	10G
	Damage limits	100G
Life expectancy	Mechanical	10,000,000 operations (frequency 18,000 operations/hr)
	Electrical	100,000 operations (frequency 900 operations/hr)
Operating ambient temperature	-30~+70°C (no freezing)	
Weight	Approx.8g	

◆ Safety Approval

Certified	UL/CUL	TUV
File No.	E188091	

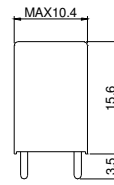
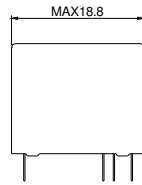
◆ Safety Approval Rating

UL/CUL
5A 250VAC
5A 30VDC

S5 RELAY

SHORI

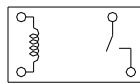
◆ Outline Dimensions



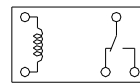
◆ Wiring Diagram

BOTTOM VIEW

1A

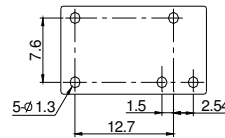
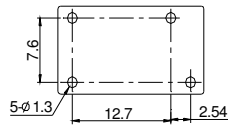


1C



◆ PC BOARD LAYOUT

BOTTOM VIEW



◆ Engineering Data

