

2013 Samsung TV F/W Upgrade Guide



Samsung Electronics

Step1. How to prepare the USB Memory Drive

1. Download the firmware file from Samsung.com into your computer.

File Name : T-FXPDEUC.zip

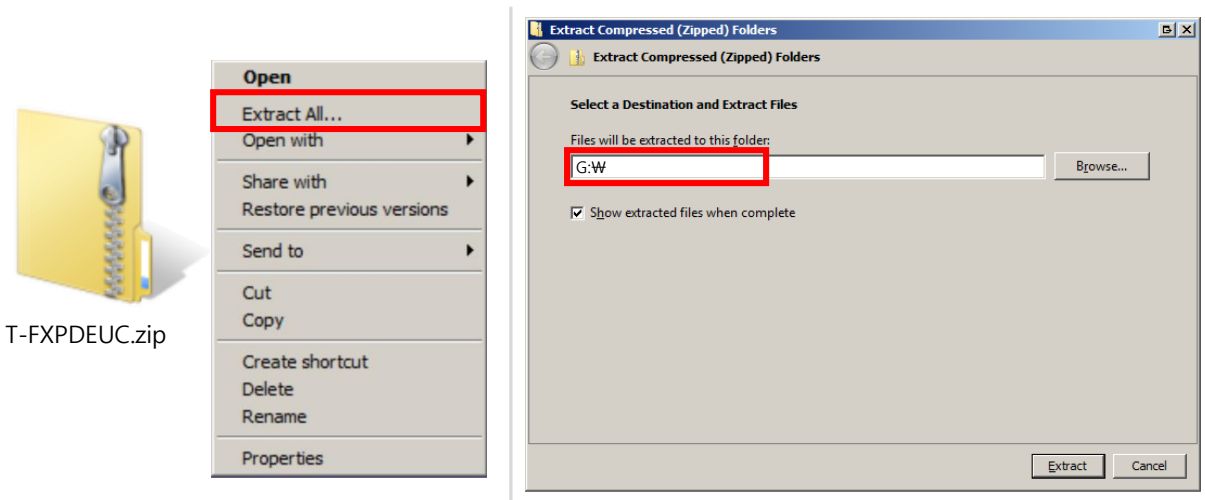
2. Connect the USB Memory Drive to the USB port of your PC.

Copy the file to USB Memory Drive.

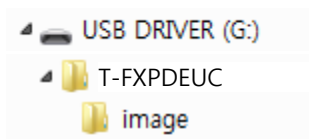
3. Follow below steps to extract the file and make a folder for firmware. The folder should have same name with the file and exist in the root directory.

(An extracting process might be different by application in PC)

3-A. Click the file and 'Extract All...'. Then select USB driver that files will be extracted.



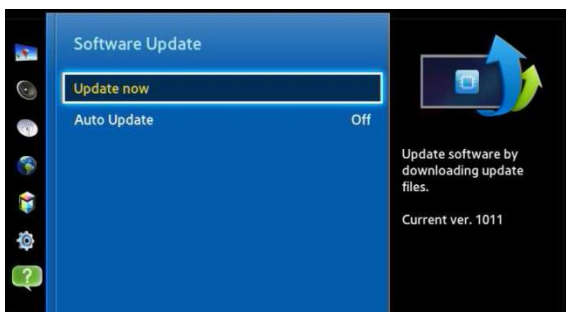
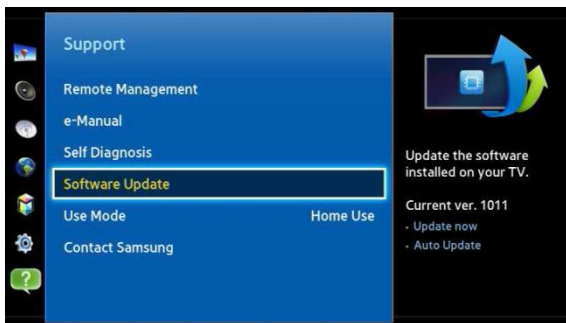
3-B. Confirm that USB Driver has a folder named 'T-FXPDEUC' in the root directory.



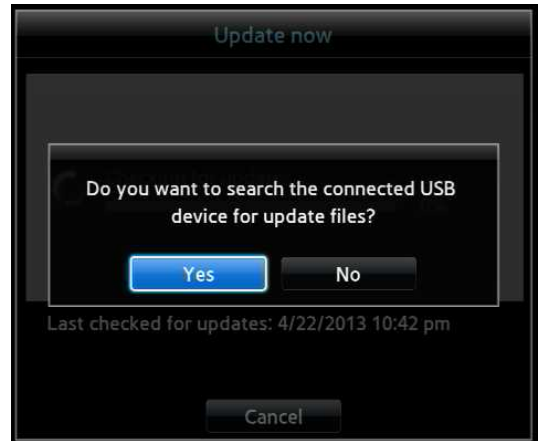
3-C. Safely disconnect the USB memory drive by clicking in 'Safely Remove' in Task Bar.

Step2. How to upgrade the Firmware by USB

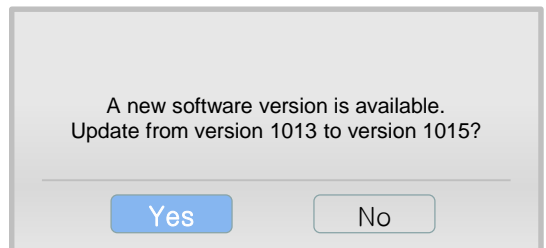
1. Insert the USB Memory Drive containing the firmware into the USB port of TV.
2. Turn on the TV and wait around 1 or 2 minutes.
3. Press the MENU button, select 'Support', 'Software Update', and then 'By USB'.



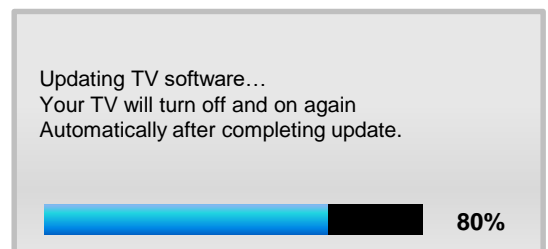
4. The message for searching for update files is displayed. Press Yes.



5. If the TV finds a valid firmware version, it displays the message below. Press Yes, then TV starts updating.



6. Press Yes, then TV starts updating. When the firmware upgrade is complete, the TV turns off and then back on by itself.



❖ Cautions

While upgrading,

- ✓ Do not pull the USB Memory drive out.
- ✓ Do not unplug the power cable.
- ✓ Do not turn off the TV.

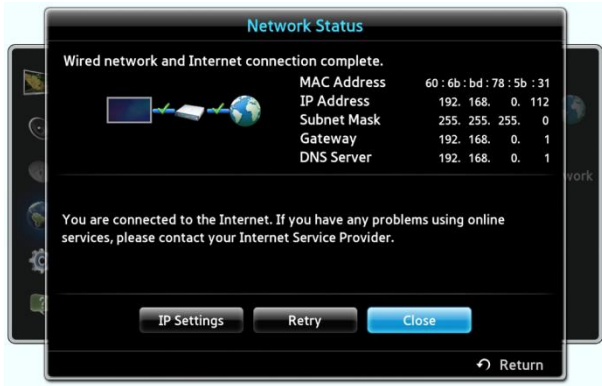


⊗ Warning

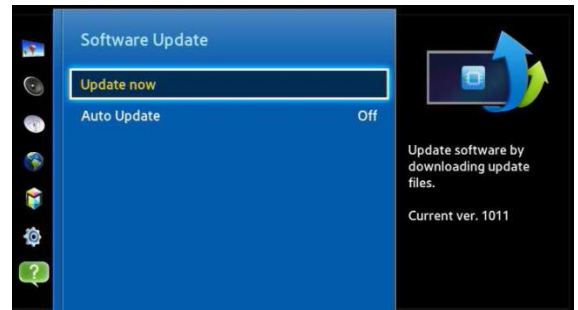
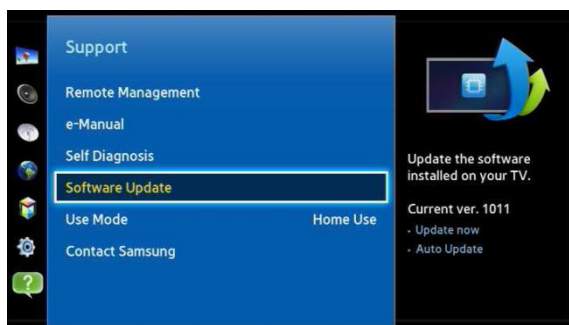
Pulling the USB Memory drive out or unplugging the power cable will cause a firmware error or main board failure. Firmware errors and main board failures are not covered by Samsung warranty policy.

❖ How to Upgrade the Firmware by Online

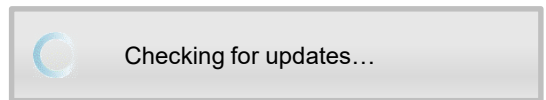
1. Turn on the TV.
2. Confirm that your TV is connected to the Network by using the Network Status test.



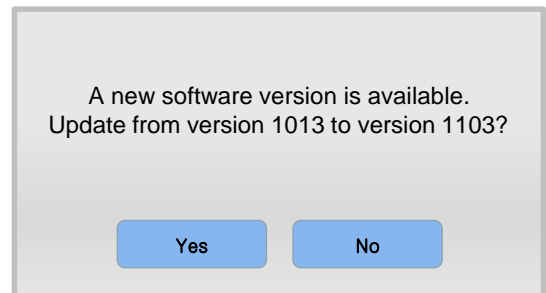
3. Press the MENU button, select 'Support', 'Software Update', and then 'Update now'.



4. The message "Connecting to the network server..." is displayed.



5. If the TV finds a higher firmware version from the server, TV asks you to update new version. Press Yes.



6. It starts downloading. When the firmware upgrade is completed, the TV turns off and then back on by itself.

