

[9] SELF DIAGNOSTICS

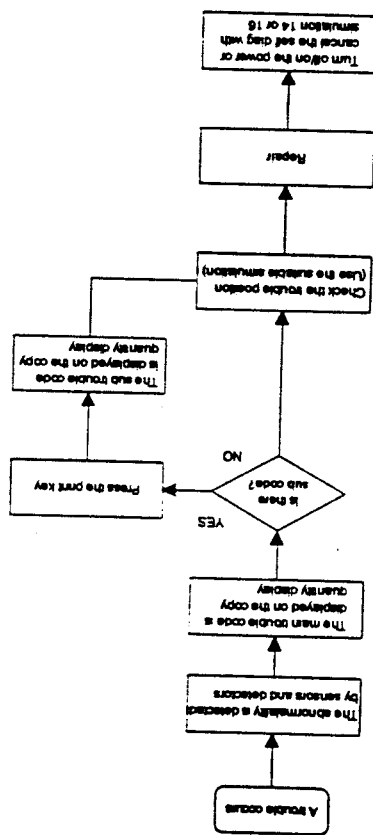
1. Summary/purpose

This model has the self diag function for the following purposes:

- (1) When a trouble occurs in the machine, the machine detects the trouble and displays the trouble content on the copy quantity display to alert the customer and the serviceman.
- (2) When any abnormality is detected, the power supply line is cut off immediately for safety and to protect the machine from damage.

2. Operation

The self diag content is displayed in the following procedure.



3. Clearing the self diag display

After repairing the trouble section, clear the self diag display according to the table below:
 Clearing the self diag display

Self diag display	L1, L3, L4, L5, L8	Turn off/on the power.	Display clearing procedure
H3, H4		Execute simulation 14.	
U2		Execute simulation 16.	
CH, PC		When the trouble is cancelled, the display is cleared.	