

1. (General Information)

The DC to AC inverter is designed as a low noise high frequency high efficiency and as a low profile and light weight switching power supply.

2. (Features)

- Applicable TO Single Tube
- Constant current output
- Possesses open load protection
- No load –output auto stop
- Meet TCO 99

3. LCD (Application)

LCD Size	Lcm Model	Brand	Remark
8.4”		AU	

4. (Operating Conditions)

Item	Symbol	Conditions	MIN	MAX	Unit	Remark
Input Voltage	Vin		10	16	V	
Operating Temperature	Top	Ha=90%RH	0	65	°C	
Storage Temperature	Tstg	Ha=95%RH	-10	80	°C	
Operating Humidity	Hop	Ta=0~55 °C	20	90	%RH	
Storage Humidity	Hstg	Ta=20~80 °C	-	95	%RH	

5. (Operating Characteristics)

Item	Symbol	Conditions	MIN.	TYP.	MAX.	Unit	Remark
Input Voltage	Vin	GND=0V	10.8	12	16	V	
Input Current (Low Brightness)	IinL	Vin=TYP. ±1% ON VR=MIN (Iout=MIN)	-	105	-	mA	
Input Current (High Brightness)	IinH	Vin=TYP. ±1% ON VR=MAX (Iout=MAX)	290	330	380	mA	
Lamp Current (Low Brightness)	IoutL	Vin=TYP. ±1% ON VR=MIN (Iout=MIN)	1.1	1.5	1.8	mA rms	
Lamp Current (High Brightness)	IoutH	Vin=TYP. ±1% ON VR=MAX (Iout=MAX)	4.2	4.6	5.0	mA rms	
Working Frequency			50	55	60	KHZ	
Dimming		Tube Current	>2.5:	-	-		
Brightness Control		Connection of Voltage	5	-	0	V	
Output Voltage		CCFT Current= 4mA	-	630	-	V	

6. (Connector Socket)

6-1. (P1) Input Connector

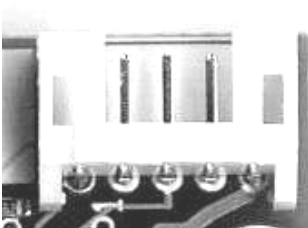
PIN No	Symbol	Description
1	Vin	DC+12V
2	GND	Ground
3	Brightness	Digital Brightness Control
4	GND	Ground
5	Control	ON/OFF control ON=+5V OFF=0V

6-2 (P2) Output Connector

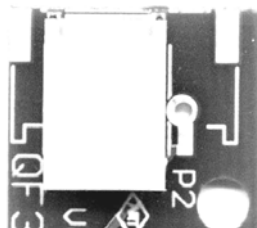
PIN No	Symbol	Description
1	Output	Lamp High Voltage
2	Output	Lamp Low Voltage

6-3 Connector Model No & Brand

Connector No.	Connector Parts No	Brand
P1(V6)	S5B-PH-k	JST
P2	SM02B-BHSS	JST



S5BPH-K
(pin1)



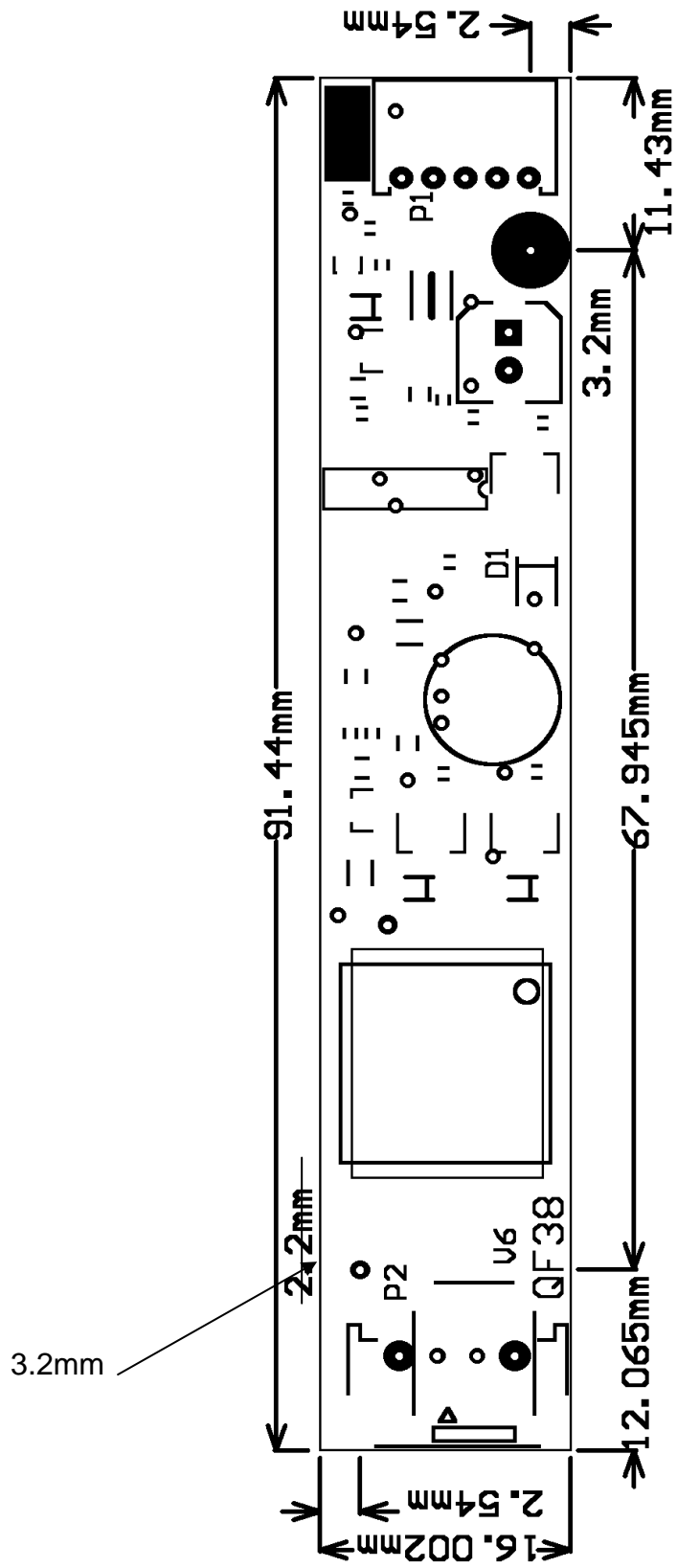
SM02B-BHSS
(pin1)

7. Mechanical Characteristics

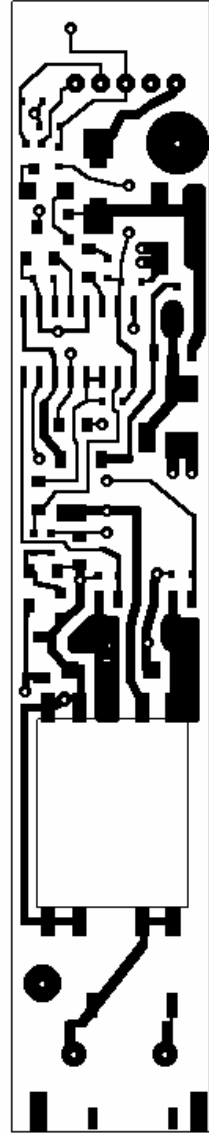
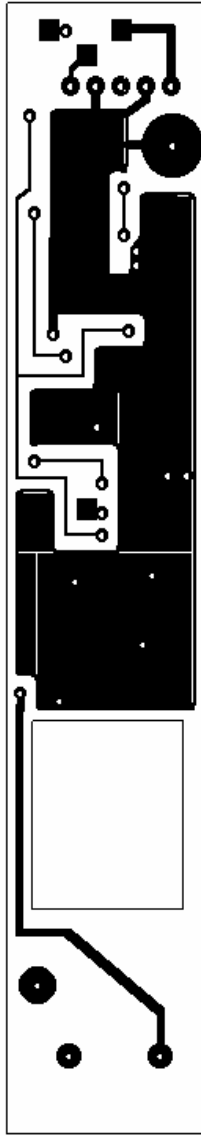
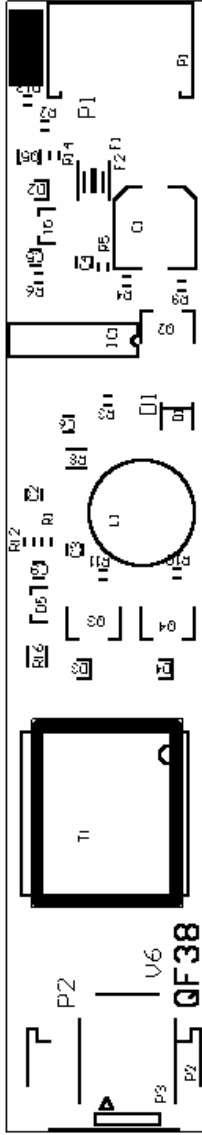
Dimension: 91.5mm *16mm *7.5mm

Weight: MAX. 13g

PCB DIMENSION



PCB LAYOUT



(Sticker Description)

(Model number)

(Version number)

QF38V6.75
VX 0114

(Lot number)

Year Week

(**Manufacture date**)

01 = 2001

15 = 15th week of 2001

ITEM	MATERIAL	CLASS	UL FILE NO	MANUF ACTURER
1.FERRITE CORE	2F8;2G8			TOMITA
	NC-2H			NICERA
2.BOBBIN	LCP (94V-0) E4008L	130°C	E54705(M)	SUMITOMO CHEMICAL CO LTD
	(94V-0) PM9630	150°C	E41429(M)	SUMITOMO BAKELITE CO LTD
3.TAPE	3M NO.1350(b)	130°C	E17385(N)	MINNESOTA MINING & MFG CO ELECTRICAL SPECIALTIES DIV
4.MYLAR FILM	LUMIRROR Z2 (94VTM-2)	105°C	E86511(M)	TORAY INDUSTRIES INC FILM DIV
	FORMEX-18	105°C	E121855	ITWFORMEX CO.LTD
	ER	105°C	E110983	GARWARE POLYESTER.LTD
5.WIRE	POLYURETHANE ENAMELLED COPPER UEW-2	130°C	E79029(S)	TOTOKU ELECTRIC CO.LTD
	UEW-1(SFBW,SFBY)	155°C	E79029(S)	TOTOKU ELECTRIC CO.LTD
	Pp155	155°C	E143312	ELEKTRISOLA CO.LTD
	DD	130°C	E84081	PACIFIC ELECTRIC WIRE & CABLE CO.LTD
6.VARNISH	BC-359	130°C	E51047(M)	JOHN C DOLPH CO
	BC-346A	200°C	E51047(M)	JOHN C DOLPH CO
7.COVER	LCP(94V-0) E4008L	130°C	E54705(M)	SUMITOMO CHEMICAL CO LTD
8.EPOXY	R-10(94V-0)	160°C	E70012(M)	ZU YU CHEMICAL CORP.
9. SILCONE RUBBER	SE9189 GRAY RTV	150°C	E55519	DOW CORNING CO.LTD
	1080 RTV	130°C	E40195	
RUBBER	777HFR	94V-0	E129576	O-KONG INDUSTRIES CO LTD
10.PCB	03V0	130°C	E171781	ART P.C.B CORP
11.FUSE	251;429		E10480	LITTELFUSE INC
	C1Q-4A		E20624	BEL FUSE INC
	3216FF 4A		E19180	COOPER INDUSTRIES INC BUSSMANN DIV