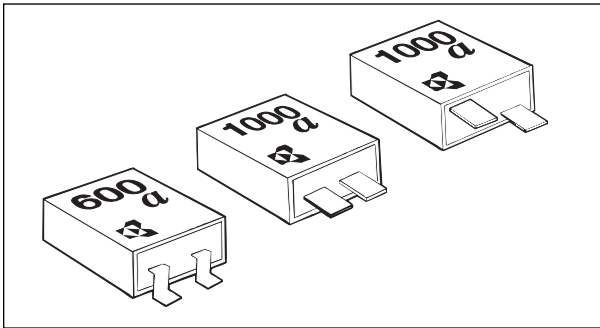


kHz Band Leaded Ceramic Resonators

KBR -B, -BK, -F Series



f_0 : 190 to 1050kHz



HOW TO ORDER

KBR - 455 BK TS

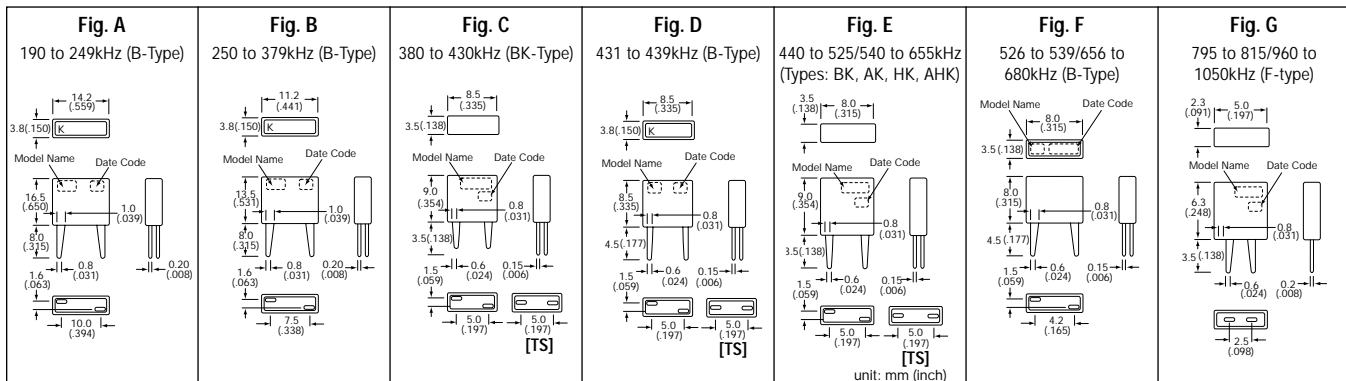
① ② ③ ④

- ① **Type:** (Kyocera Bulk Resonator)
- ② **Oscillation Frequency:** 190 to 1020kHz
- ③ **Resonator Types:** B/BK = 190 to 680kHz
F = 795 to 1050kHz
- ④ **Lead Style:** Blank □ = standard
TS = Single in-line
TL = formed lead

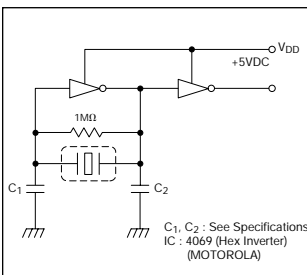
Specifications

Parameters Fig.	Frequency Range	Series	Frequency Tolerance	Resonant Impedance	Anti-Resonant Impedance	C ₁	C ₂	Temperature Stability (-20 ~ +80°C)	Standard Oscillating Frequency	Case Color
Fig. A	190 ~ 249KHz	B	±0.5%	20Ω max	25KΩ min	330pF	470pF	±0.3%	200KHz	Blue
Fig. B	250 ~ 379KHz				30KΩ min	220pF			300KHz	
Fig. C	380 ~ 430KHz	BK			400KHz					
Fig. D	431 ~ 439KHz	B			-					
Fig. E	440 ~ 525KHz	BK			455,480,500KHz					
Fig. F	526 ~ 539KHz	B			-					
Fig. E	540 ~ 599KHz	BK		35KΩ min	100pF	100pF	540,560KHz			
Fig. E	600 ~ 655KHz			50Ω max			50KΩ min		600,640KHz	
Fig. F	656 ~ 680KHz	B		70Ω max	70KΩ min	100pF	680KHz			
Fig. G	795 ~ 815KHz	F		100Ω max			800KHz			
Fig. G	960 ~ 1050KHz		1000KHz	Green						

Dimensions: millimeters (inches)



Test Circuit



Lead Type	Lead Shape	Frequency Range							
		B-Type		BK-Type		F-Type			
TS				380 to 430 kHz 440 to 525 kHz 540 to 655 kHz		795 to 815 kHz 960 to 1050 kHz Single in-line is standard for F Series			
TL		190 to 379 kHz	A* 3.0 B* 3.0	431 to 439 kHz	A* 4.5 B* 6.0	380 to 430 kHz	A* 3.5 B* 5.0	795 to 815 kHz	A* 1.9 B* 1.9
		526 to 539 kHz	4.5 6.0	526 to 539 kHz	4.5 6.0	440 to 525 kHz	3.5 5.0	960 to 1050 kHz	1.9 1.9
		656 to 680 kHz	4.5 6.0	540 to 655 kHz	4.5 6.0	540 to 655 kHz	3.5 5.0		

*Dimensions in mm.

Additional information on this product is available from AVX's catalog or AVX's FAX Service.
Call 1-800-879-1613 and request document #126. Visit our website <http://www.avxcorp.com>

