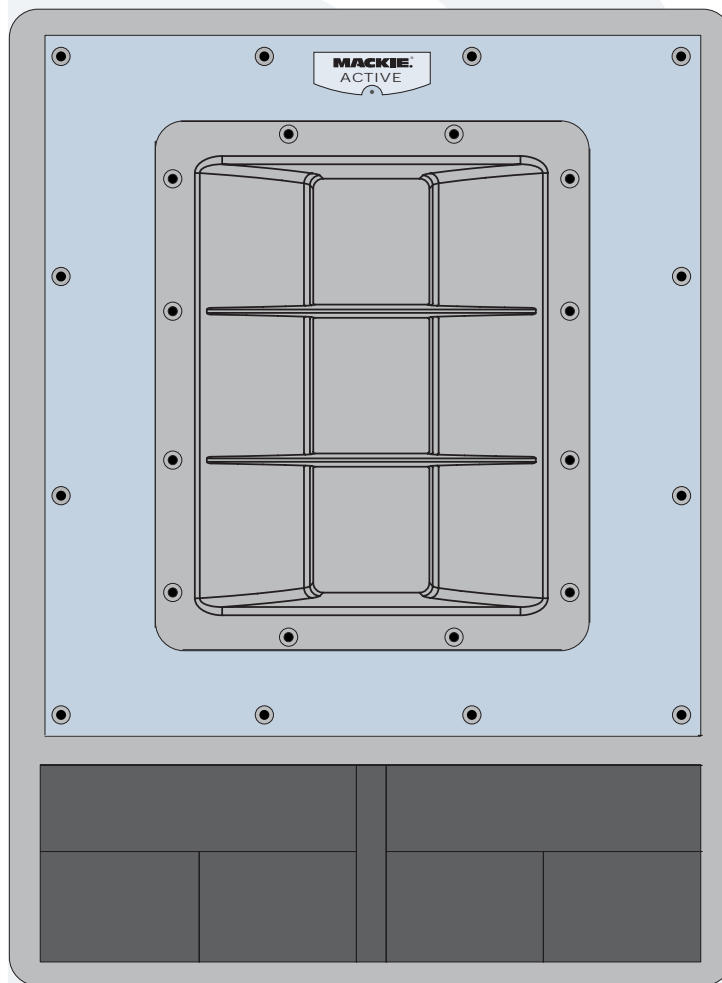




SWA1501 REPAIR MANUAL





These instructions are intended to help restore any ailing SWA1501 Active Subwoofer back to factory working conditions. They show how to remove and replace the woofer and amp assembly.

Please contact Mackie Tech Support (1-800-898-3211) to receive a Service Request Number and Order Number for parts needed for this restoration. They will also help you determine the nature of the problem and what parts will repair the unit.

Tools needed:

NOTE: not all tools listed below will be needed for your repair

- Phillips head screwdriver.
- 5mm allen wrench.
- Solid workbench.
- Non-carpeted work area due to static electricity. If available, an ESD mat (Electro-static discharge) is optimal.

Parts needed:

NOTE: not all parts listed below will be needed for your repair

- | | | |
|----------------------|---------------|-----------|
| • Led PCB Assembly | Part #0007334 | pages 3-4 |
| • 15" Woofer | Part #0015276 | pages 5-6 |
| • Amplifier Assembly | Part #0005686 | pages 7-8 |

Safety Warnings:

- Make sure that you turn off the unit and disconnect the power cord (and all other cords) before you begin these procedures.
- Always use safety glasses!
- Please try NOT to touch any of the pcb circuitry, capacitors, resistors, etc.
- Take care to read and follow these instructions. It may help to read the instructions prior to the repair to get an idea of what it entails.
- Before beginning the repair, touch metal to discharge any lingering internal static electricity.

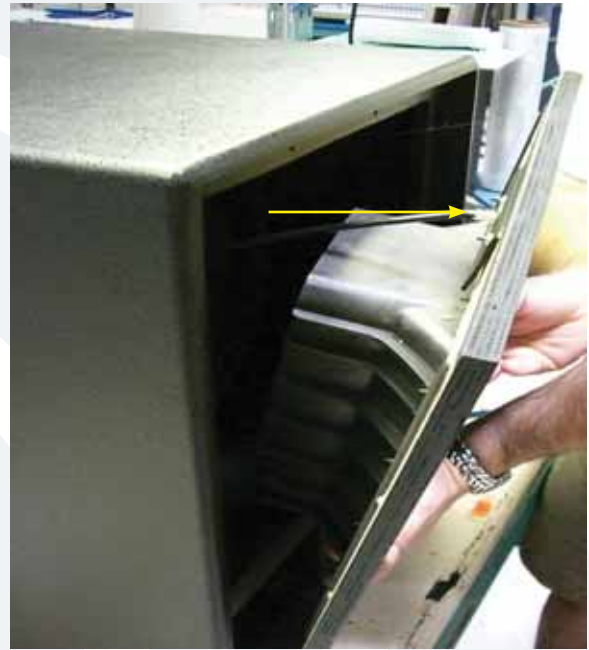




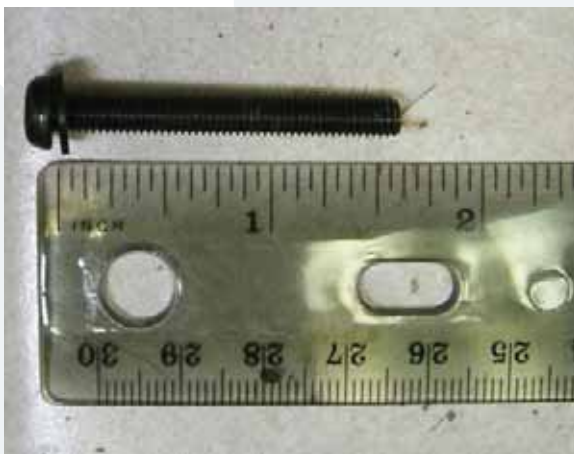
Led PCB replacement:



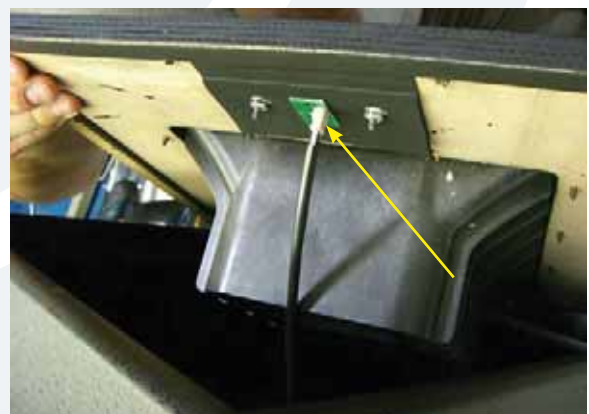
1 Twelve screws need to be removed from the front panel using the phillips head screwdriver.



3 Carefully begin to remove the front panel. The wave guide is a great place to grip for stability and support. Do not fully remove front panel as the cable is still attached to the led PCB assembly.



2 Keep the 12 screws and washers in a safe place.

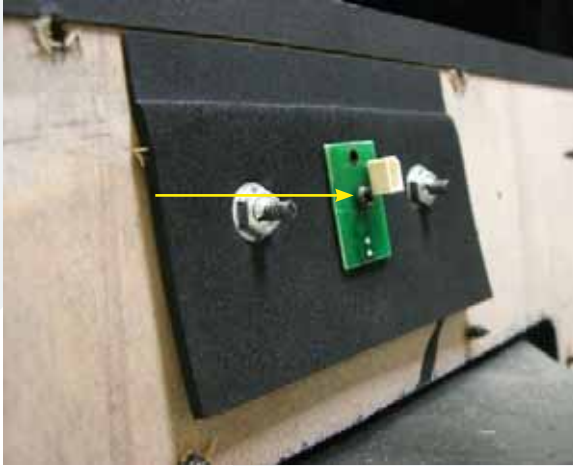


4 Carefully remove the cable attached to the led PCB assembly.





Led PCB replacement continued:



- 5** Use phillips head screwdriver to remove one screw from center of led PCB assembly.



- 6** Carefully remove led PCB assembly from back side of front panel. A flathead screwdriver may aid in removal of led PCB assembly if it is sticking.


- 7** The hard part is done, the rest is easy! Place new led PCB assembly (part #0007334) where the old one was. Follow the same steps as above, but backwards 6 to 1. Power up the SWA1501 and led should light up. Congratulations, you just replaced an led PCB assembly...now go play some shows!



Woofer replacement:

1 Follow steps 1-4 of led PCB replacement, as the front panel will need to be removed in order to access the woofer.

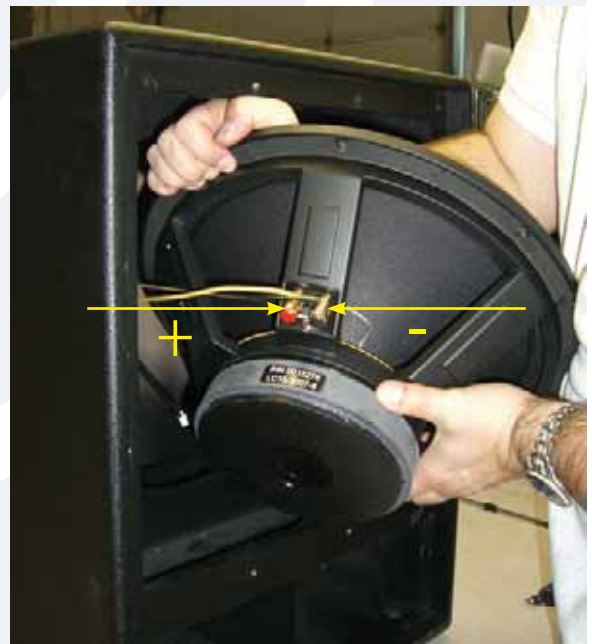


4 Carefully begin to remove the woofer. **Caution:** woofer is approximately 15 pounds with weight unevenly distributed. 

2 Eight screws need to be removed from the woofer using the 5mm allen wrench.



3 Keep the eight screws in a safe place.

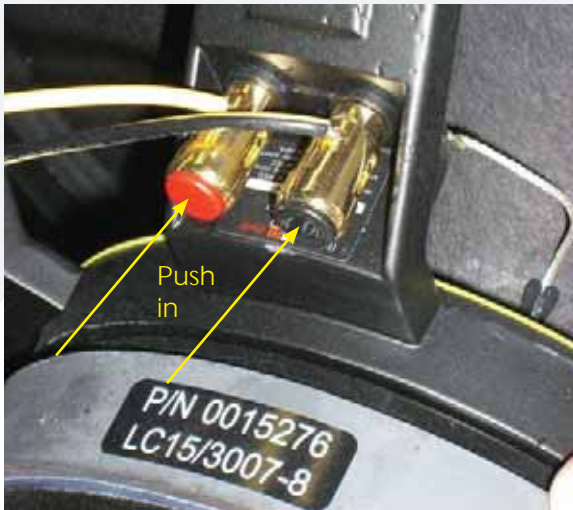


5 Positive (solid yellow) and negative (yellow and black) cables are still attached to woofer terminals.





Woofer replacement continued:

www.loudtechinc.com

- 6** Remove cables from terminals simply by pushing down on the terminal and pulling out the cable.



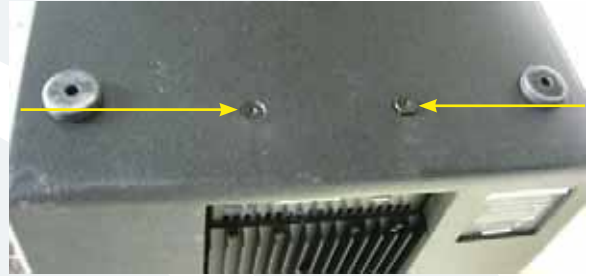
- 7** This is what it looks like with the front panel and the woofer both removed. Place the new woofer (part #0015276) where the old one was. Follow the same steps as above, but backwards 6 to 1, making sure to keep the led PCB assembly cable in front of woofer. Power up the SWA1501 and the new woofer should now be pumping out glorious lows. Awesome, you just replaced a 15" woofer!



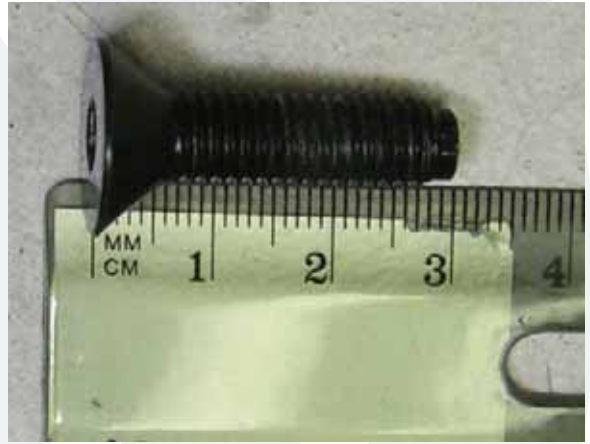
Amp Assembly replacement:



1 Four screws need to be removed from the amp assembly using a 5mm allen wrench. The screws are located at the top and bottom of the SWA1501 (see following pictures and further instructions).



3 The last remaining two screws located on the bottom of the SWA1501.



4 Keep the four screws in a safe place.



2 Two screws located on the top of the SWA1501 patiently awaiting removal.





Amp assembly replacement continued:



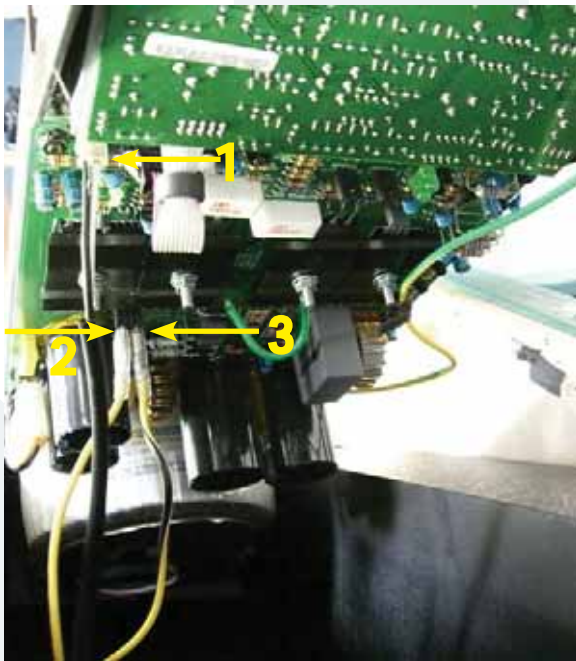
5 It may be easier to remove the amp assembly if the cabinet is on its side. Do not completely remove amp assembly yet, as cables need to be removed first.



Caution: amp assembly is approximately 15 pounds, so please make sure to grasp it firmly.



7 This is what the cabinet looks like with the amp assembly removed. Place the new amp assembly (part #0005686) where the old one was. Follow the same steps as above, but backwards 6 to 1. Power up the SWA1501 and relish in the fact that you just replaced an amp assembly. Hats off to you for a job well done!



6 Three cables need to be removed from the amp assembly: (1) led PCB cable, (2) positive (solid yellow) cable, and (3) negative (yellow and black) cable. Notice their placement, as well -- solid yellow cable and black wire of led PCB cable both towards the edge of the amp.

8 Important: The faulty amplifier assembly must be returned to LOUD Technologies. The address should be on the return shipping label that was provided with the new amp assembly. If not, the return address is at the top of this page. Also, please write the order number and service request number (ex: 1046256-1203935) in big, black, bold numbers on the outside of the box. This helps expedite the return.

