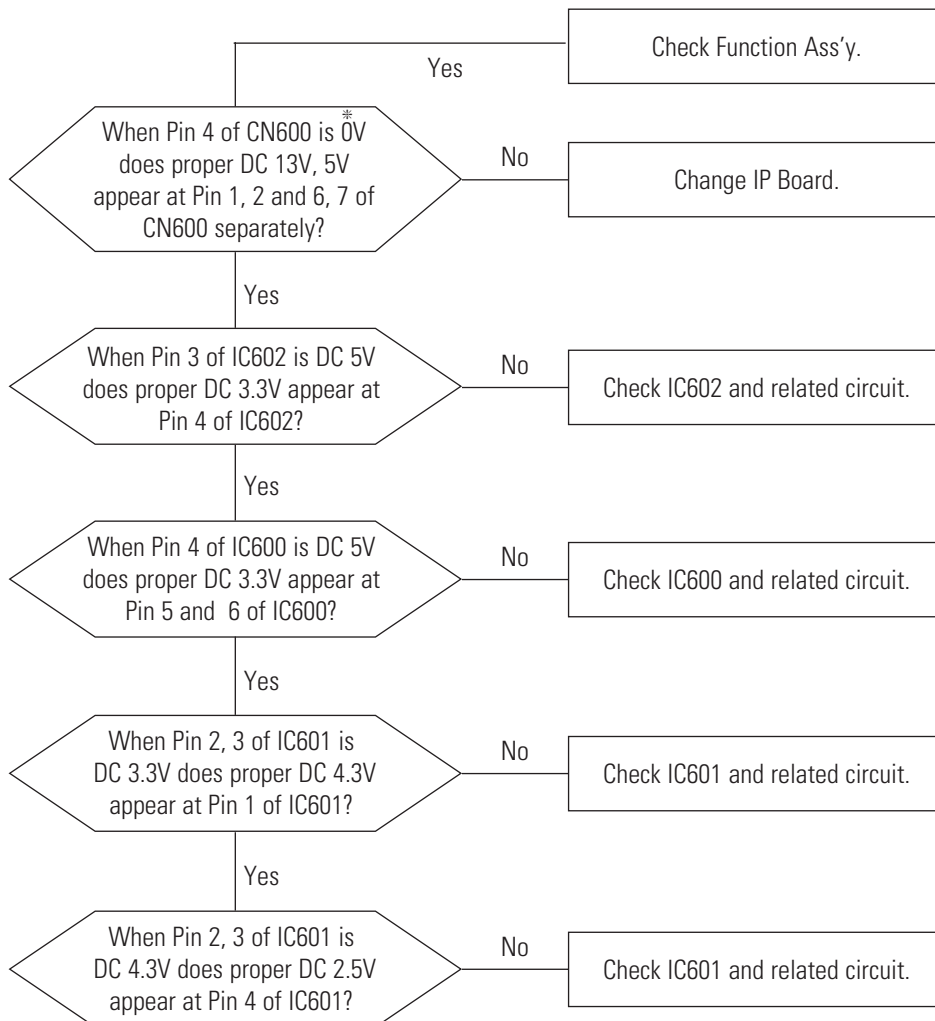


## 5 Troubleshooting

- Notes:**
- Before troubleshooting, setup the PC's display as below.
    - Resolution: 1024 x 768
    - H-frequency: 61 kHz
    - V-frequency: 75 Hz
  - If no picture appears, make sure the power cord is correctly connected.
  - Check the following circuits.
    - No raster appears: Function PBA, Main PBA, I/D PBA
    - 5V develop but no screen: Main PBA
    - 5V does not develop: I/D PBA
  - If you push and hold the " (Enter, Source)" button for more than 5 seconds, the monitor automatically returns to the factory preset.

### 5-1-1 No Power (MJ15A\*/MJ15B\*)

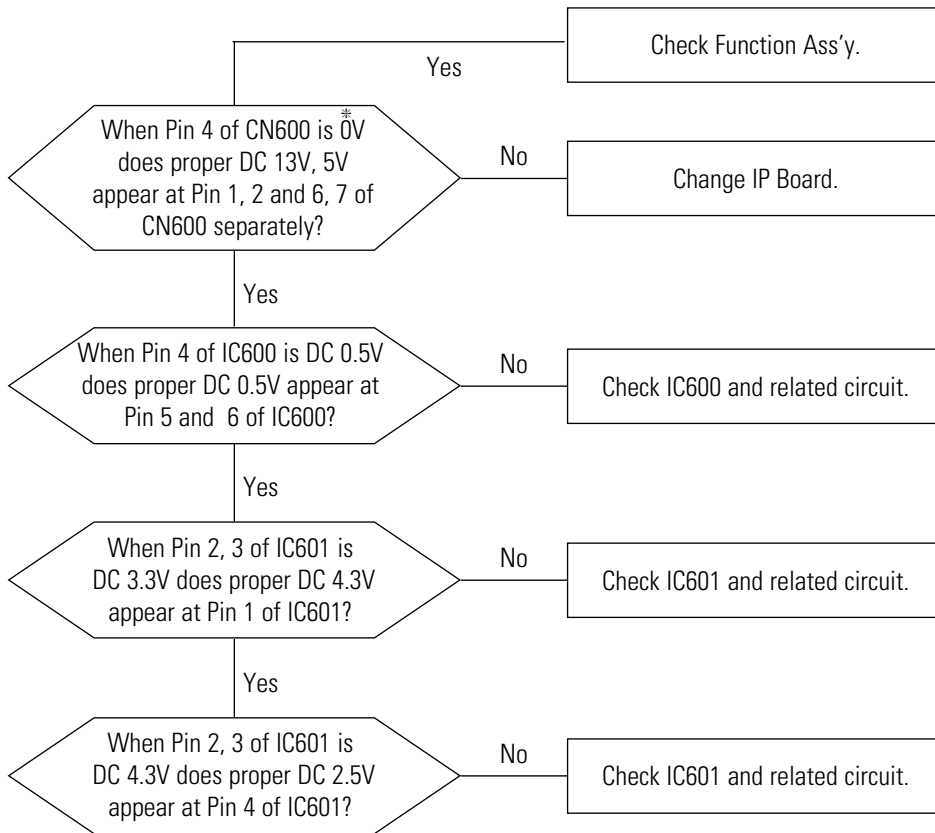


\* 0V means power on state.

When the monitor work well except DPMS and power switch off,  
0V should be applied to number 4 of CN600.

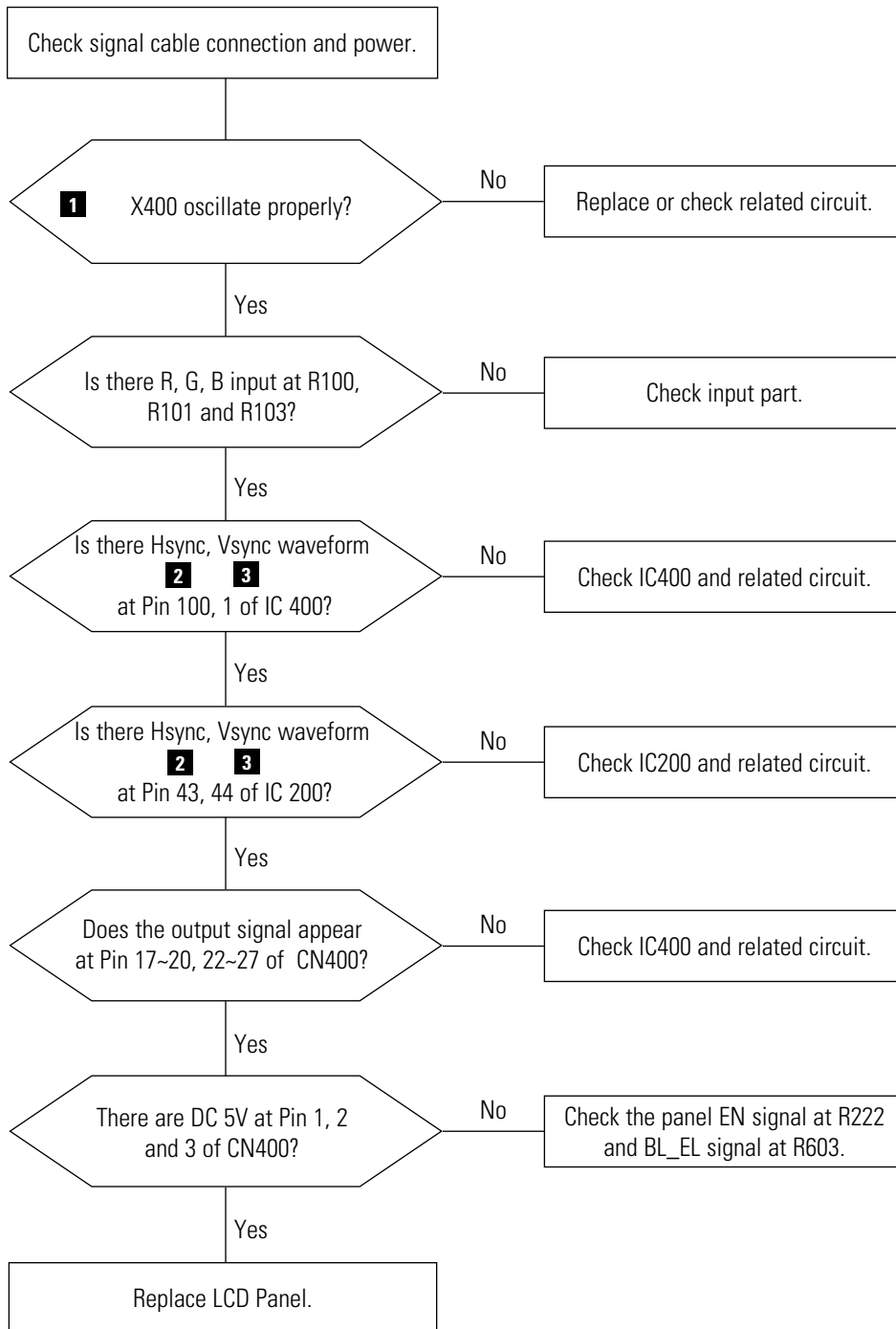
- Notes:**
1. Before troubleshooting, setup the PC's display as below.
    - Resolution: 1280 x 1024
    - H-frequency: 64 kHz
    - V-frequency: 60 Hz
  2. If no picture appears, make sure the power cord is correctly connected.
  3. Check the following circuits.
    - No raster appears: Function PBA, Main PBA, I/P PBA
    - 5V develop but no screen: Main PBA
    - 5V does not develop: I/P PBA
  4. If you push and hold the "⏏(Enter/Source)" button for more than 5 seconds, the monitor automatically returns to the factory preset.

### 5-1-2 No Power (MJ17A\*/MJ19A\*/MJ17B\*/MJ19B\*)

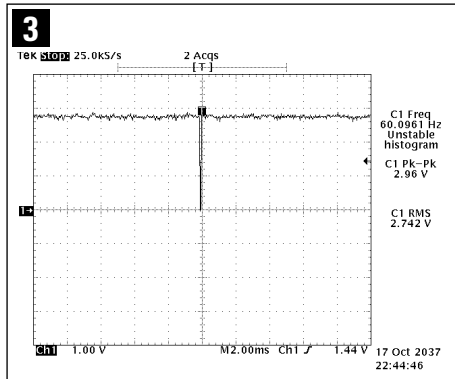
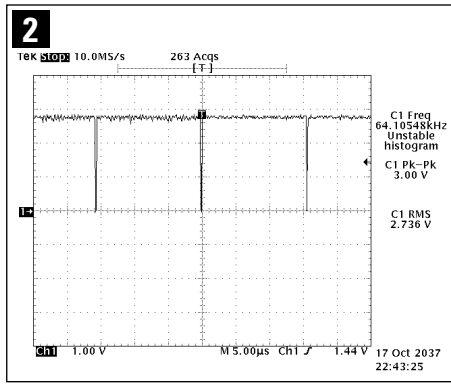
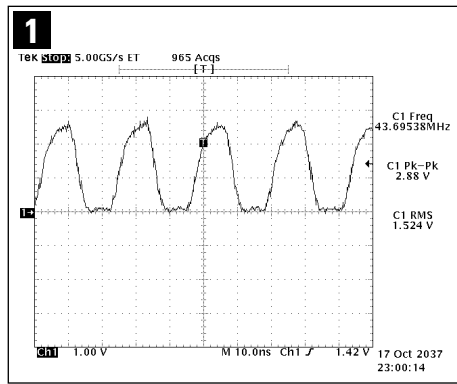


\* 0V means power on state.  
When the monitor work well except DPMS and power switch off,  
0V should be applied to number 4 of CN600.

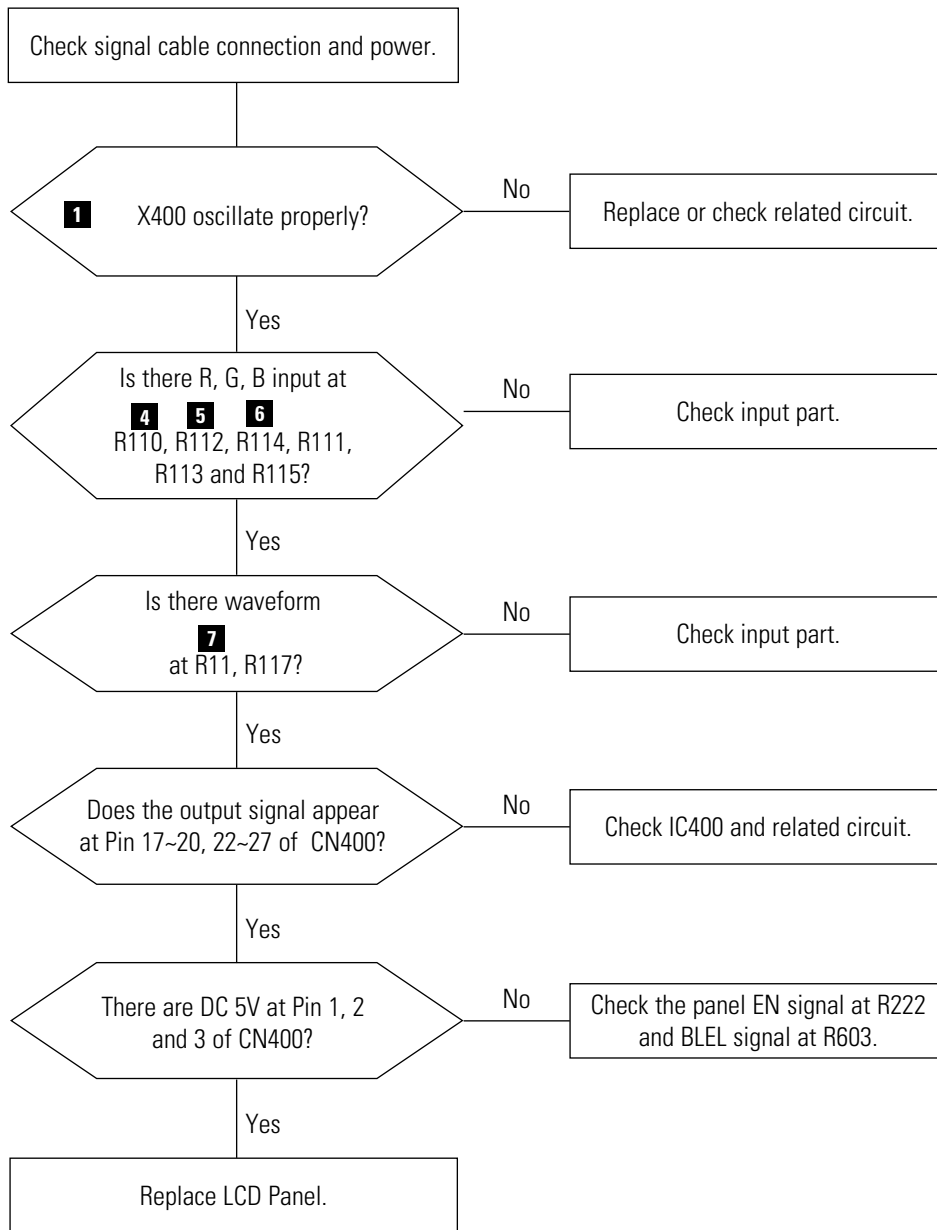
### 5-2-1 No Video (ANALOG)



# WAVEFORMS



### 5-2-2 No Video (DIGITAL)



# WAVEFORMS

