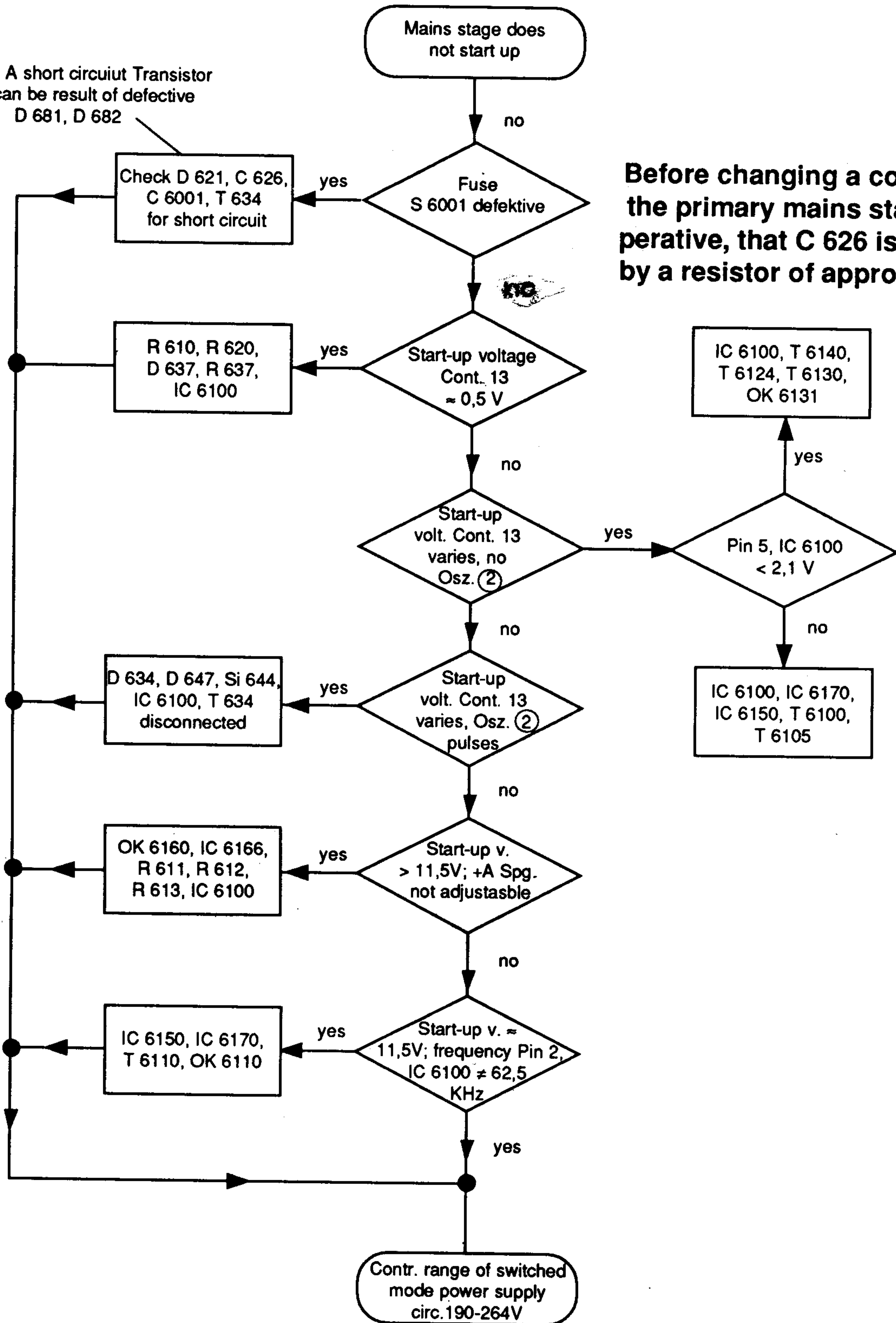


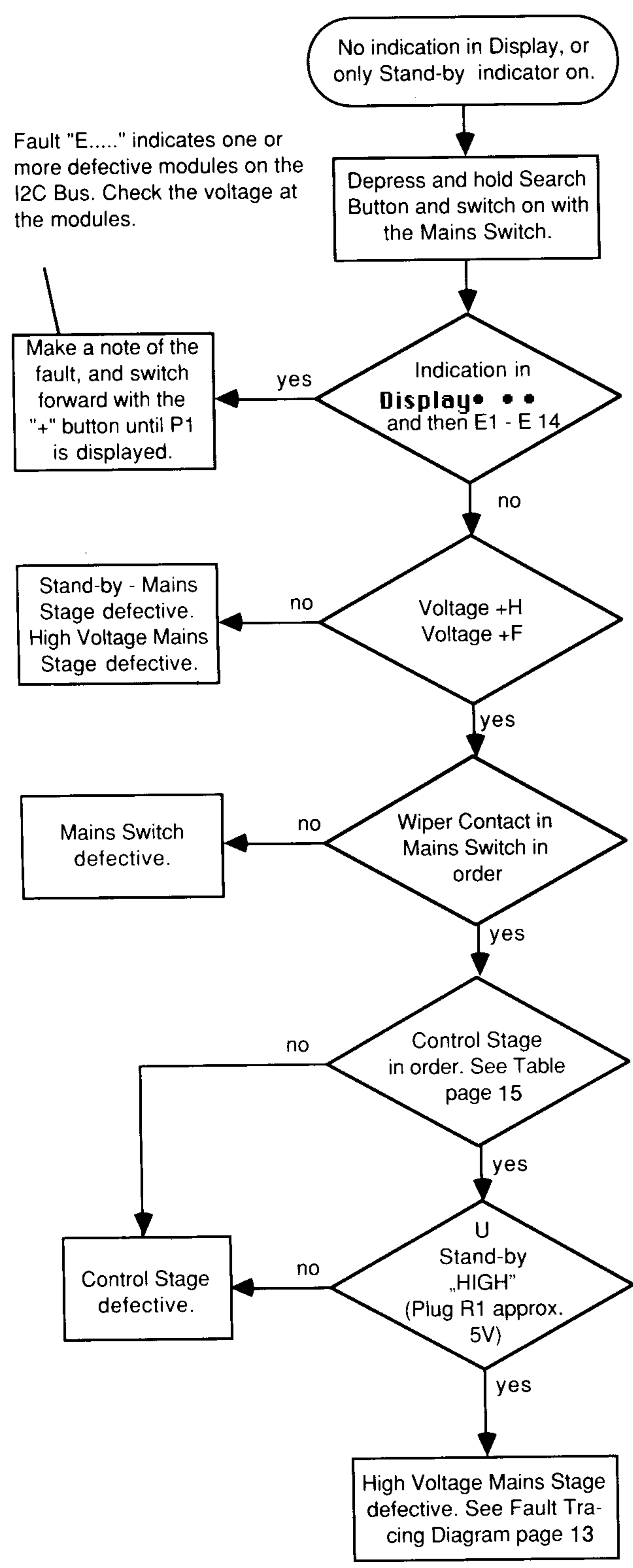
Fault tracing diagram

Attention! A short circuit Transistor T 634 can be result of defective D 681, D 682

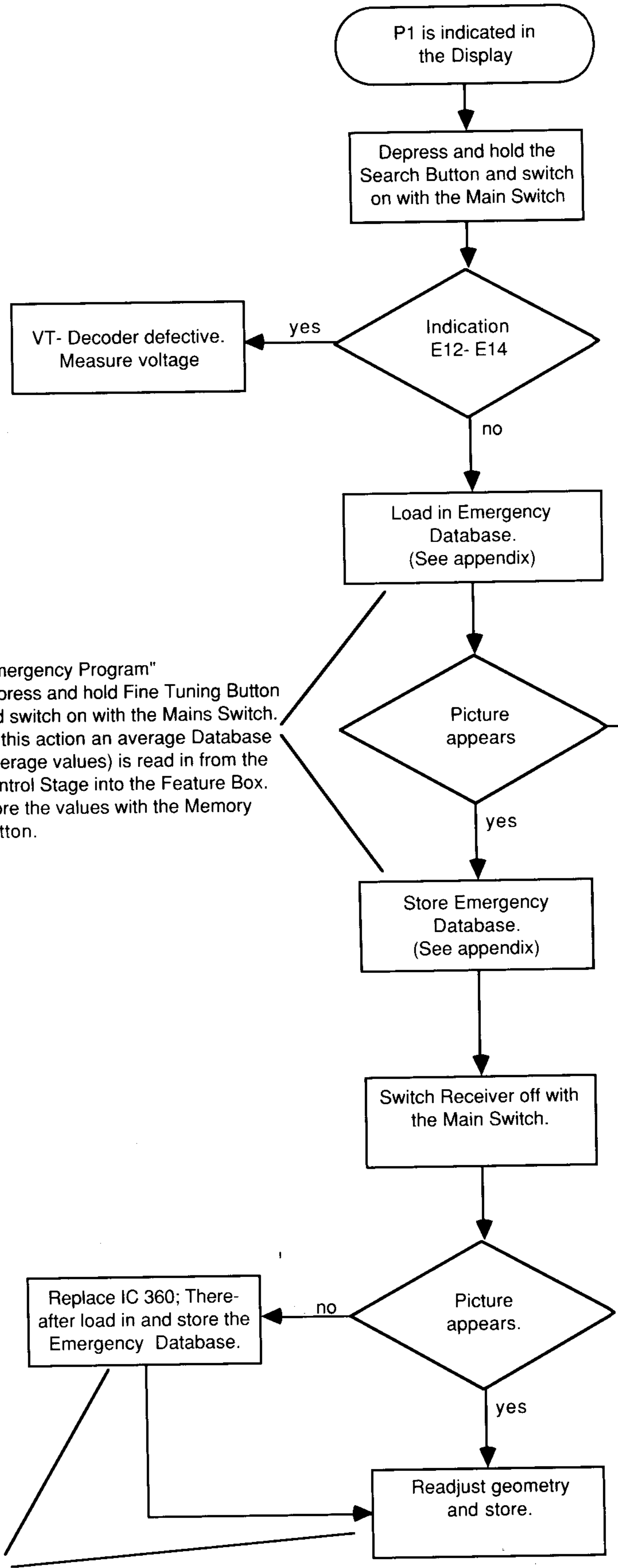


Before changing a component in the primary mains stage it is imperative, that C 626 is discharged by a resistor of approx. 100 Ohm.

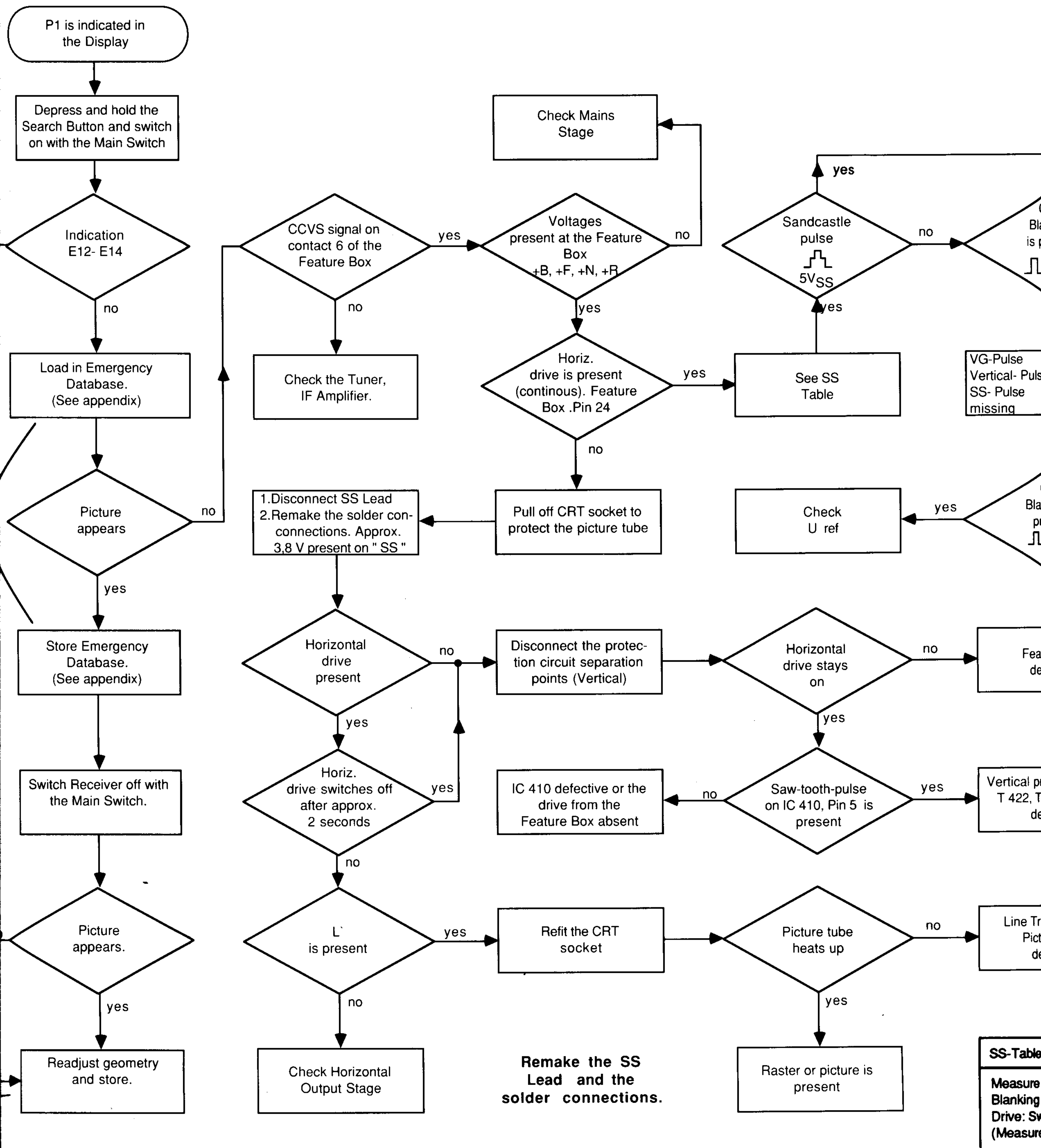
No Picture, No Sound

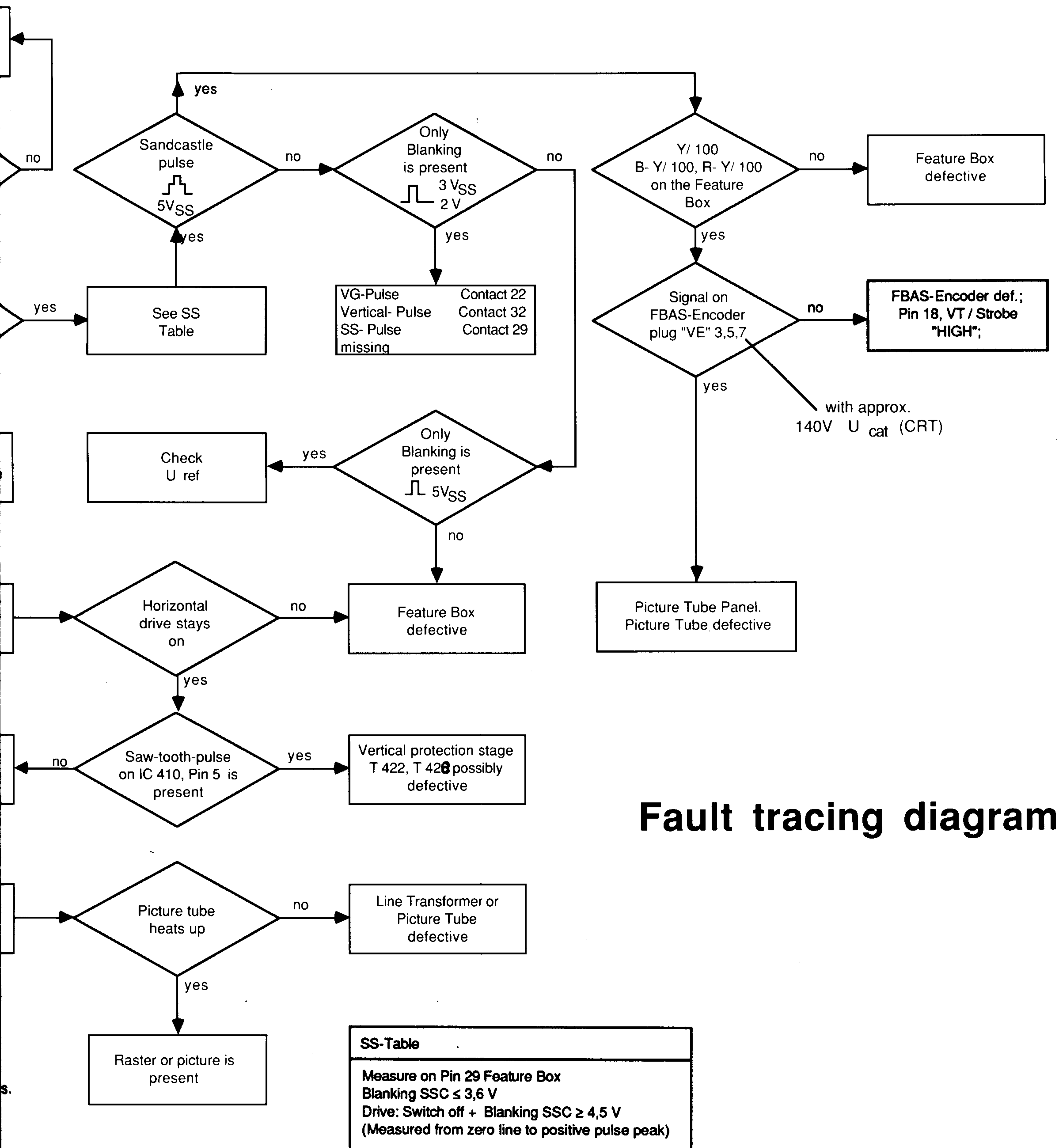


Fault "E....." indicates one or more defective modules on the I2C Bus. Check the voltage at the modules.



Program is possibly altered by a high voltage flashover.





Fault tracing diagram

SS-Table
Measure on Pin 29 Feature Box Blanking SSC $\leq 3,6$ V Drive: Switch off + Blanking SSC $\geq 4,5$ V (Measured from zero line to positive pulse peak)