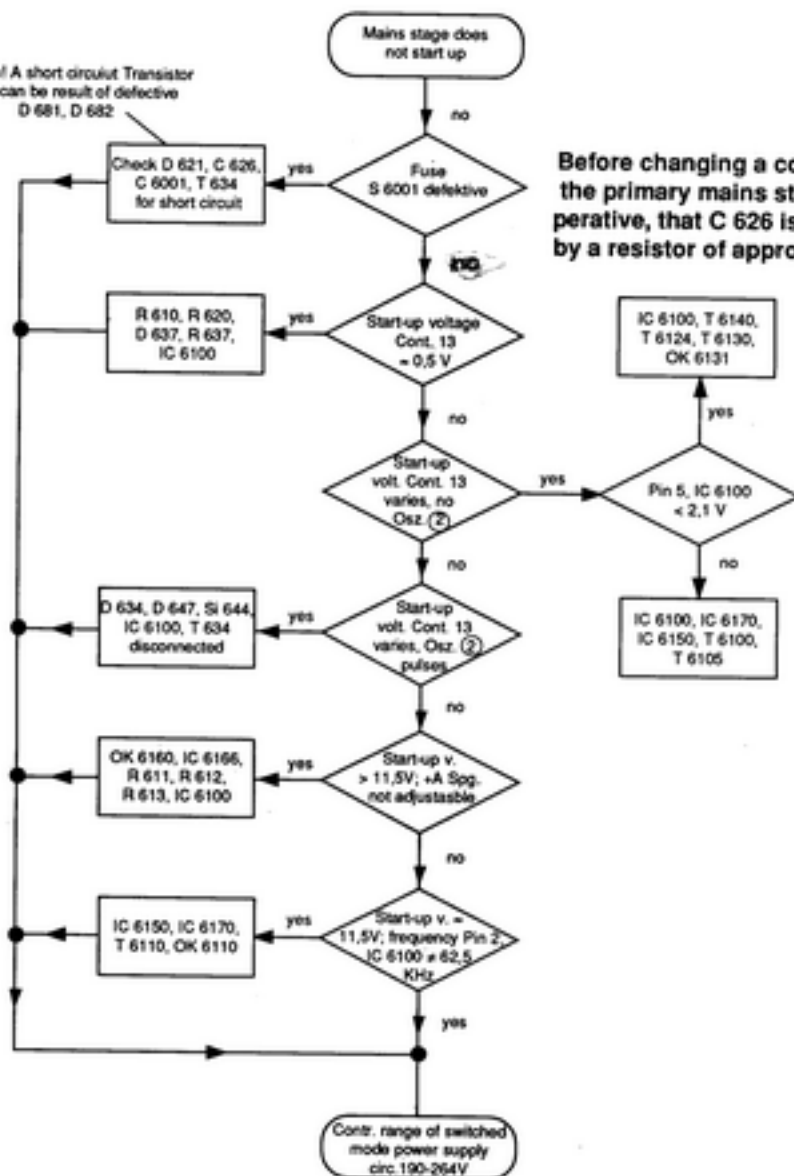


# Fault tracing diagram

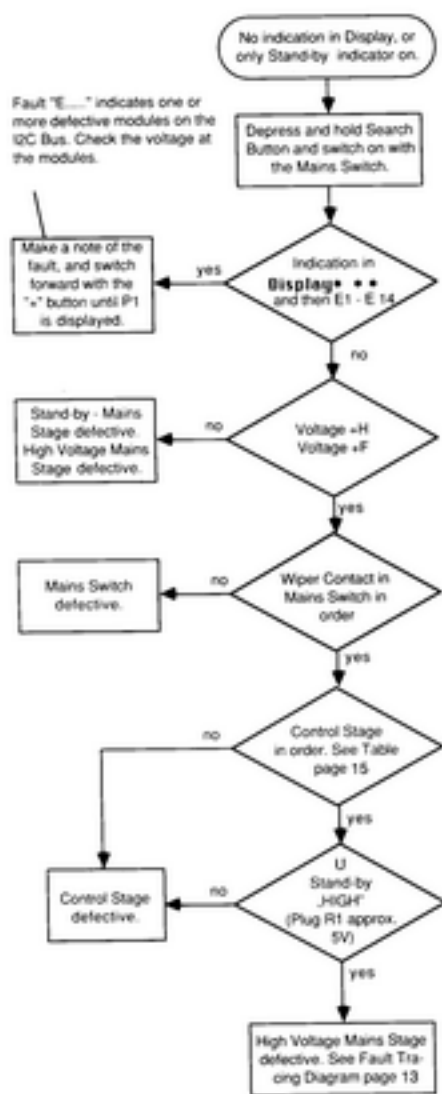
Attention! A short circuit Transistor T 634 can be result of defective D 681, D 682



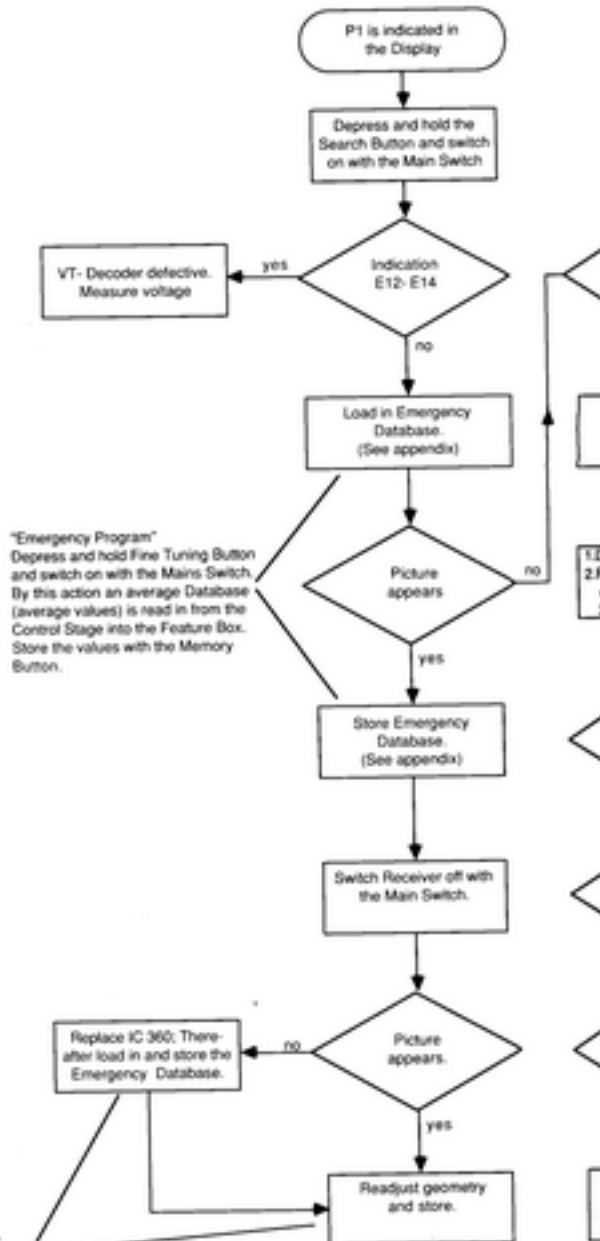
Before changing a component in the primary mains stage it is imperative, that C 626 is discharged by a resistor of approx. 100 Ohm.

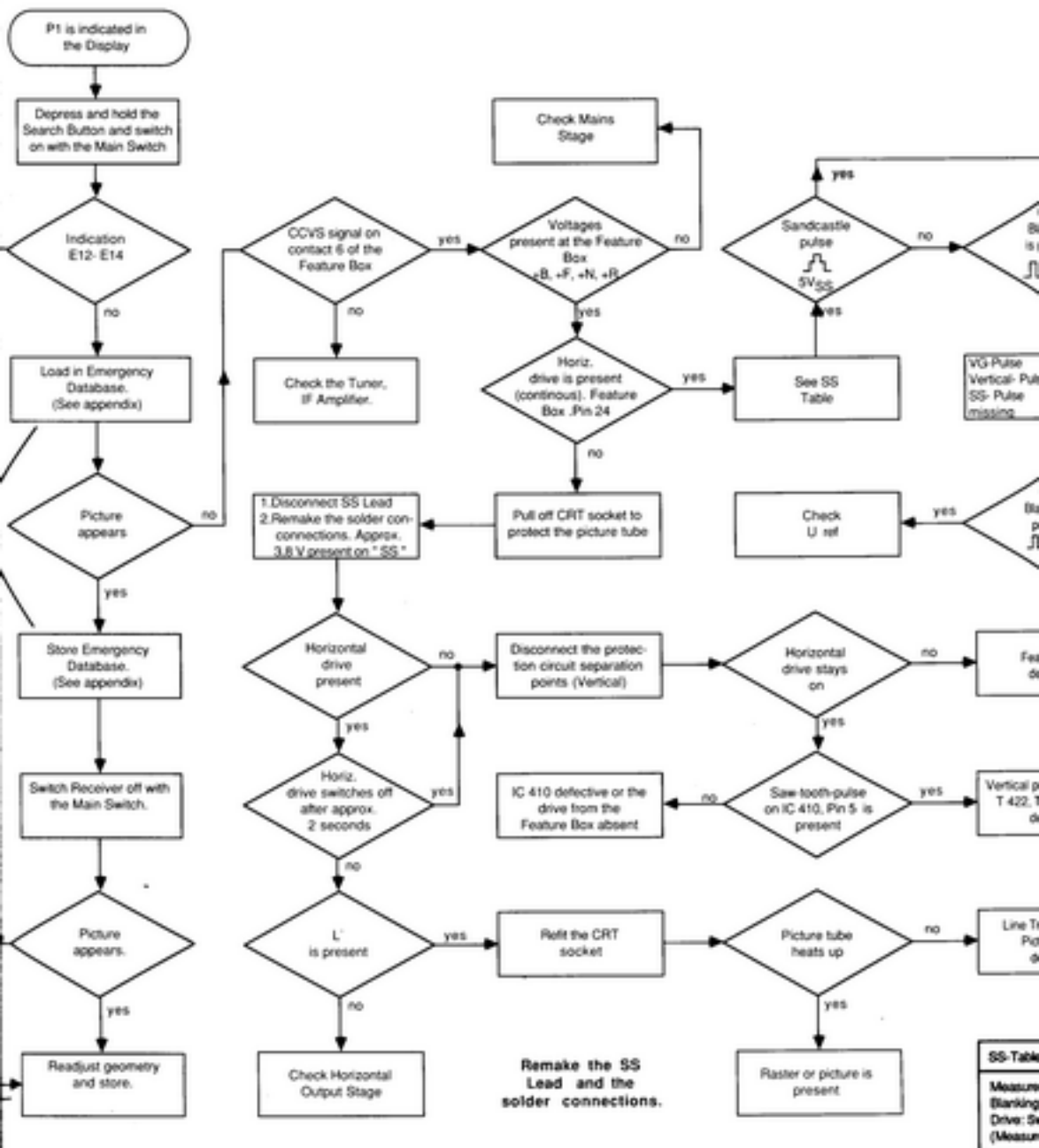
## No Picture, No Sound

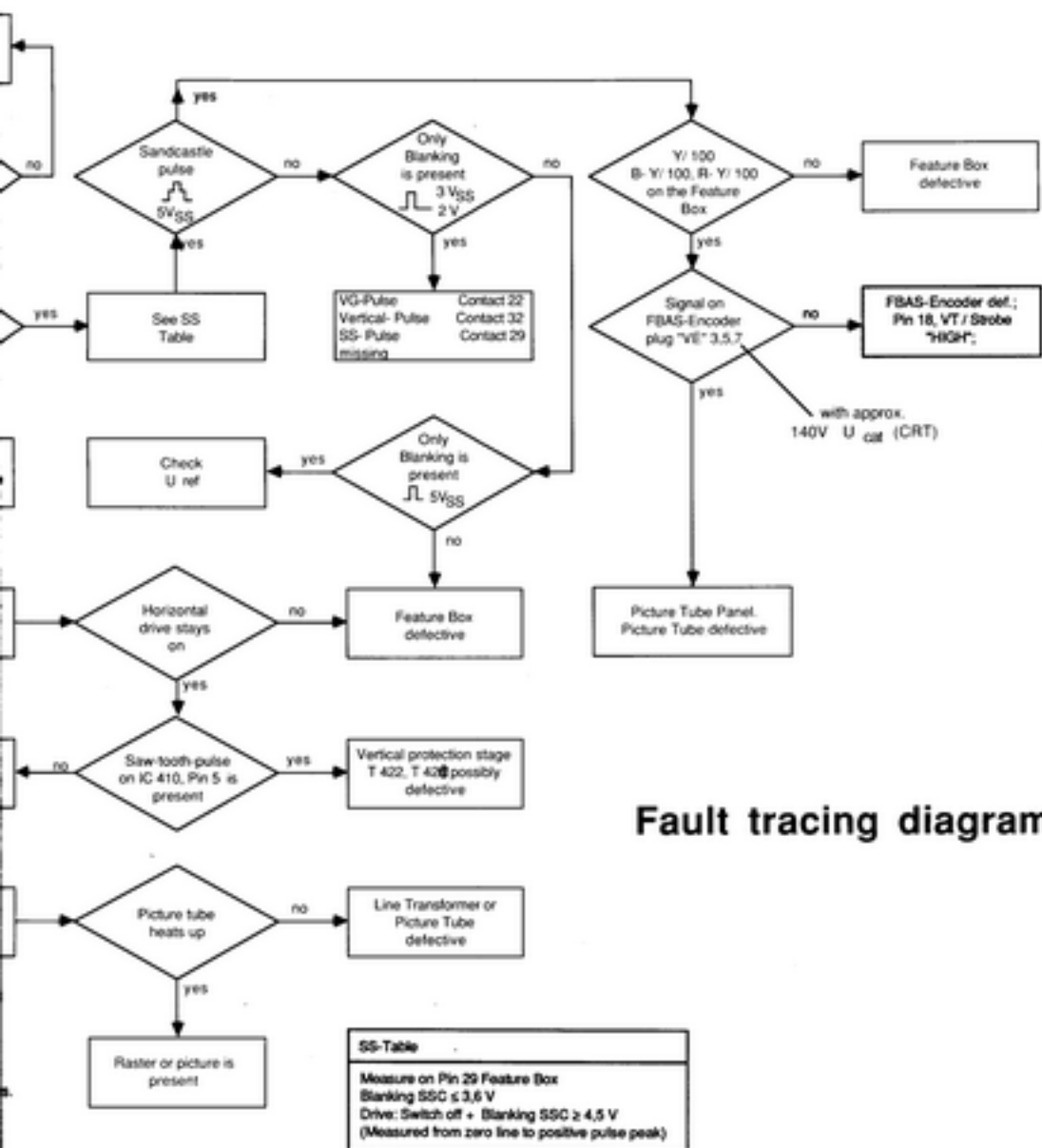
Fault "E...." indicates one or more defective modules on the I/Q Bus. Check the voltage at the modules.



Program is possibly altered by a high voltage flashover.







## Fault tracing diagram