
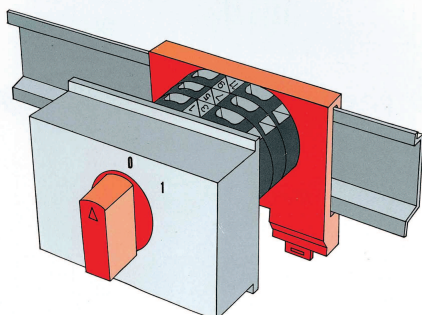


DESCRIPTION

	HD 12		HD 16		HD 20		HF 25		HF 32		HF 40		HF 63	
	12A/660V ~		16A/660V ~		20A/660V ~		25A/660V ~		32A/660V ~		40A/660V ~		63A/660V ~	
	order number	elem. no	order number	elem. no	order number	elem. no	order number	elem. no	order number	elem. no	order number	elem. no	order number	elem. no
SWITCHES														
1/pole	HD 1201	1	HD 1601	1	HD 2001	1	HF 2501	1	HF 3201	1	HF 4001	2	HF 6301	2
2/pole	HD 1202	1	HD 1602	1	HD 2002	1	HF 2502	1	HF 3202	1	HF 4002	2	HF 6302	2
3/pole	HD 1203	2	HD 1603	2	HD 2003	2	HF 2503	2	HF 3203	2	HF 4003	4	HF 6303	4
4/pole	HD 1204	2	HD 1604	2	HD 2004	2	HF 2504	2	HF 3204	2	HF 4004	4	HF 6304	4
CHANGE-OVER SWITCHES (conn. entry)														
1/pole	HD 1205	1	HD 1605	1	HD 2005	1	HF 2505	1	HF 3205	1	HF 4005	2	HF 6305	2
2/pole	HD 1206	2	HD 1606	2	HD 2006	2	HF 2506	2	HF 3206	2	HF 4006	4	HF 6306	4
3/pole	HD 1207	3	HD 1607	3	HD 2007	3	HF 2507	3	HF 3207	3	HF 4007	6	HF 6307	6
4/pole	HD 1240	4	HD 1640	4	HD 2040	4	HF 2540	4	HF 3240	4	HF 4040	8	HF 6340	8
CHANGE-OVER SWITCHES (sep. entry)														
1/pole	HD 1241	1	HD 1641	1	HD 2041	1	HF 2541	1	HF 3241	1				
2/pole	HD 1242	2	HD 1642	2	HD 2042	2	HF 2542	2	HF 3242	2				
3/pole	HD 1243	2	HD 1643	3	HD 2043	3	HF 2543	3	HF 3243	3				
4/pole	HD 1244	4	HD 1644	4	HD 2044	4	HF 2544	4	HF 3244	4				
3 P. REVERSING	HD 1208	3	HD 1608	3	HD 2008	3	HF 2508	3	HF 3208	3				
POLES COMMUT.	HD 1209	4	HD 1609	4	HD 2009	4	HF 2509	4	HF 3209	4				
COMMUT. Δ	HD 1210	4	HD 1610	4	HD 2010	4	HF 2510	4	HF 3210	4				
POLES COMMUT. REVERSING	HD 1211	6	HD 1611	6	HD 2011	6	HF 2511	6	HF 3211	6				
STAR-DELTA REVERSING Δ Δ	HD 1212	5	HD 1612	5	HD 2012	5	HF 2512	5	HF 3212	5				
VOLTMETER														
phase-neutral	HD 1215	2												
phase-phase	HD 1216	2												
ph-ph + ph-neutr.	HD 1218	3												
AMMETER														
1p. for 3 C.T.	HD 1222	3												
2p. for 3 C.T.	HD 1225	5												

MOTOR SWITCHES ALSO AVAILABLE: Single Phase + Aux. Phase, Single Phase with capacitor, etc.

CAM SWITCHES ON DIN RAIL - TECHNICAL SPECIFICATIONS

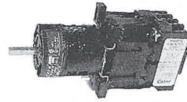


Control motor and threephase load switches

Model	Thermic rated current I_{th2}	Insulation rated voltage U_i	AC 1 AC 21B 3x380V KW	AC 2 AC 22B 3x380V KW HP	AC 3 AC 23B 3x380V KW HP
HD 12	12	660	7,5	$\frac{4}{5,5}$	$\frac{3,5}{4,5}$
HD 16	16	660	10	$\frac{7,5}{10}$	$\frac{5}{6,7}$

DEVICE CONTACTOR

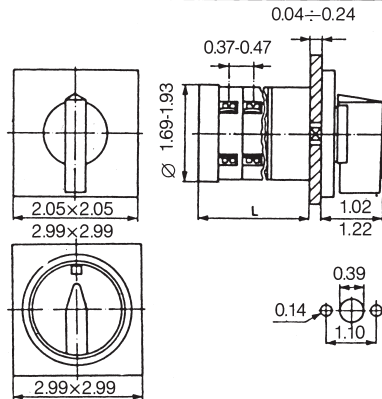
DEVICE WITH CONTACTOR



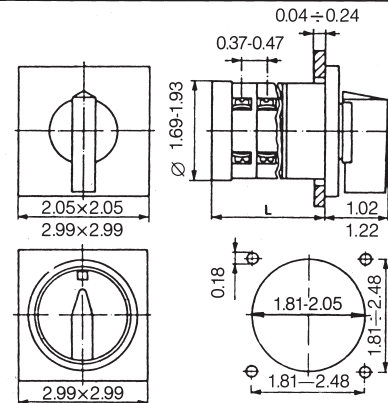
Dimensions: on request

OVERALL DIMENSIONS AND DRILLING TEMPLATES

VERSION "F"
Flush mounting



VERSION "F"
Panel mounting



TYPE	ELEMENTS	CONTACTS	SIZE L	VERSION "T" Flush mounting with mechanical interlock	
HD	1	1-2	1.51		
HD 25/32	1		1.69		
HD 40/63	2		2.16		
HD	2	3-4	1.88		
HD 25/32	2		2.16		
HD 40/63	4		3.11		
HD	3	5-6	2.26		
HD 25/32	3		2.63		
HD 40/63	6		4.05		
HD	4	7-8	2.63		
HF 25/32	4		3.11		
HF 40/63	8		5.00		

ACCESSORIES

	Contact protections HD and HF		Little handle
	Contact protection HF 40/63		Big handle
	Rigid plastic protection		Handle for 4 padlocks
	Flexible plastic protection		Rubber strip for protection degree IP 54 (dimensions on request)