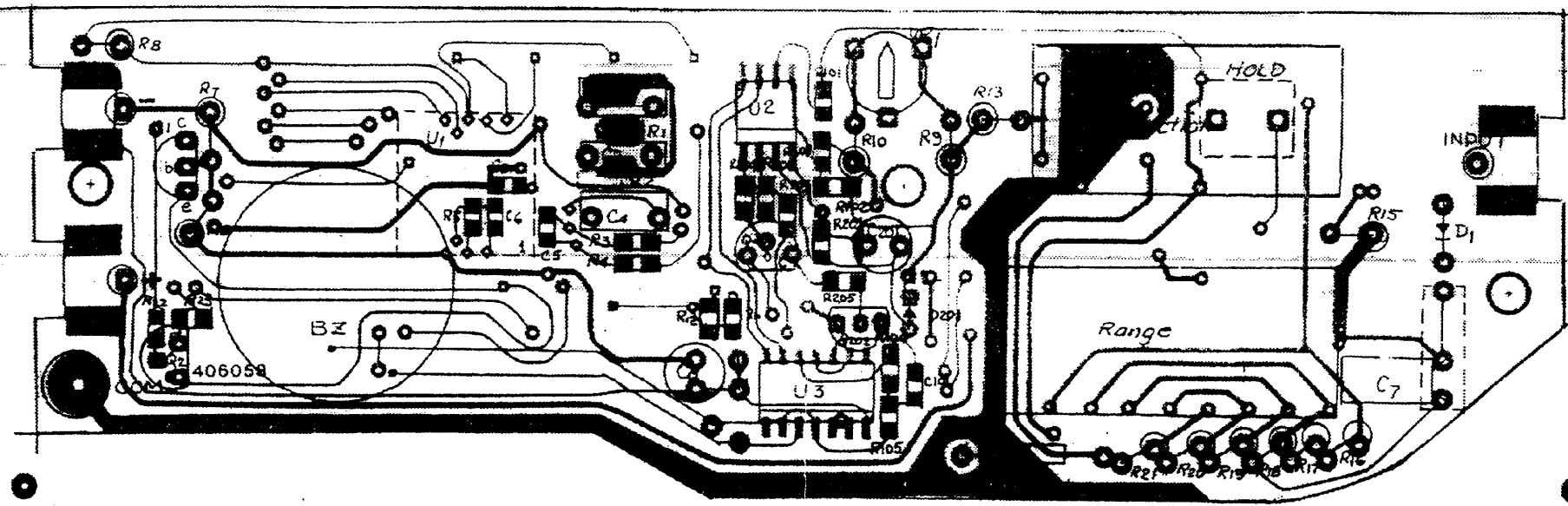


	1	2	3	4
V <sub>V</sub>	-	-	200	500
V <sub>=</sub>	2000m	20	200	500
mA	-	-	200	-
Ω	2000	20K	200K	2000K

Range  
 1 -  
 2 -  
 3 -  
 4 -  
 OFF -

1st Revision  
 30<sup>th</sup> March, 1993  
 DATE:  
 22<sup>nd</sup> Jan., 1993  
 SIGNATURE:  
*P. J. Am*

SCHEMATIC:	MODEL: Vc999	DATE: 22 <sup>nd</sup> Jan., 1993	SIGNATURE: <i>P. J. Am</i>
TITLE: Circuit Diagram		CALTEK INSTRUMENT LTD.	



# CALTEK INSTRUMENT LTD.

## PART LIST *Vc999*

Item	Description	Schem No	Qty	Remarks	UPC HKS	PRC HKS
1	IC: TC7106CKW	U1	1	Flat package		
2	Transistor: 9014	Q1,2	2	Any hFE group		
3	Diode: 1N4004	D1	1	Or 1N4007		
4	Trim.Pot. 200ohm	VR1	1	5 x 5		
5	MFR 1/4W-548K-0.5%	R16	1	Sorted		
6	MFR 1/4W-352K-0.5%	R17	1	Sorted		
7	MFR 1/4W-90K-0.5%	R18	1	Sorted		
8	MFR 1/4W-9K-0.5%	R19	1	Sorted		
9	MFR 1/4W-900-0.5%	R20	1	Sorted		
10	MFR 1/4W-100-0.5%	R21	1	Sorted		
11	MFR 1/4W-11K5-1%	R9	1			
12	MFR 1/4W-380-1%	R10	1			
13	MFR 1/4W-1ohm-0.5%	R15	1	*Or wirewound		
14	CFR 1/4W-1M-5%	R6	1			
15	CFR 1/4W-470K-5%	R7,8	2			
16	CFR 1/4W-1K-5%	R13,14	2	R14 to be selected		
17	Chip R 1M-5%	R2,11,12	3	0805 or 820k		
18	Chip R 470K-5%	R1	1	0805		
19	Chip R 100K-5%	R3,4,5	3	0805		
20	Chip R 20K-5%	R22,23	2	0805 or 22k & 27k		
21	Chip C 104-10%	C5	1	0805		
22	Chip C 223-10%	C3	1	0805		
23	Chip C 101-10%	C6	1	0805		
24	Metalized C 224-10%	C2	1	*		
25	E Cap 4u7 50V	C7	1			
25	Metalized C 104-10%	C1,4	2	*		
26	LCD: GPD-023	LCD	1	Or CSL-853		
27	Fuse: F 200mA 250V	Fuse	1	* 5 x 20		
28	Plastic Parts		1	* Full set		
29	Battery Plate	105026	3	For Input & Battery		
30	V shape plate		8	Compatible with 3920		
31	Screw: ST2.5 x 10	2.6x10	1	For battery cover		
32	Screw: ST 2.5 x 12	2.6x10	1	For case		
33	Screw: ST 2.5 x 8	2.6x6	2	For PCB		
34	Test Lead		1	* For COM terminal		
35	Shrink tube 2mm x 15		1	Test tip		
36	Helical spring 1.9 x 9	105006	2			
37	Steel ball 2mm		2			
38	Test pin 2 x 33	105025	1	Inserted		
39	PCB 406058	406058	1	1.6mm		
40	Rubber connector		2	38 x 7.3 x 1.5 YP		
41	Gift box	VC999	1	CONRAD		
42	Manual	VC999	1	CONRAD		
43	9V battery		1			
44	Name label	VC999	1	CONRAD		