

# Component Placing, Electrical

Applicable for K610i, K610im, K618i and V630i

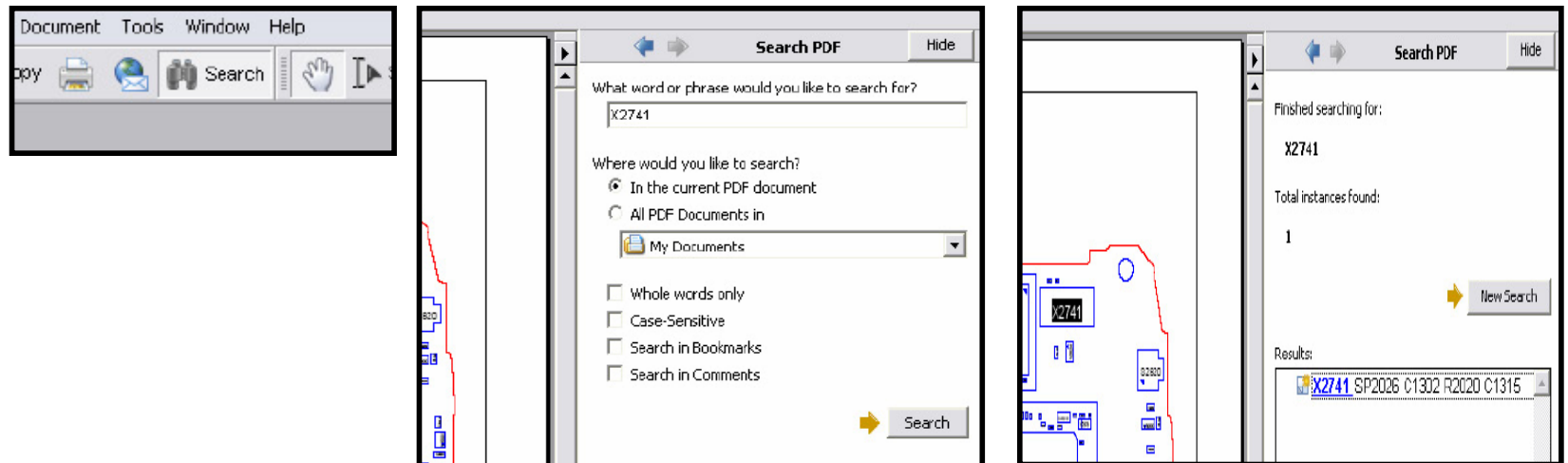
## Contents

<b>1</b>	<b>Mounting drawing table.....</b>	<b>2</b>
<b>2</b>	<b>Mounting drawing ROA 128 1740/2 .....</b>	<b>3</b>
<b>3</b>	<b>Revision history .....</b>	<b>6</b>

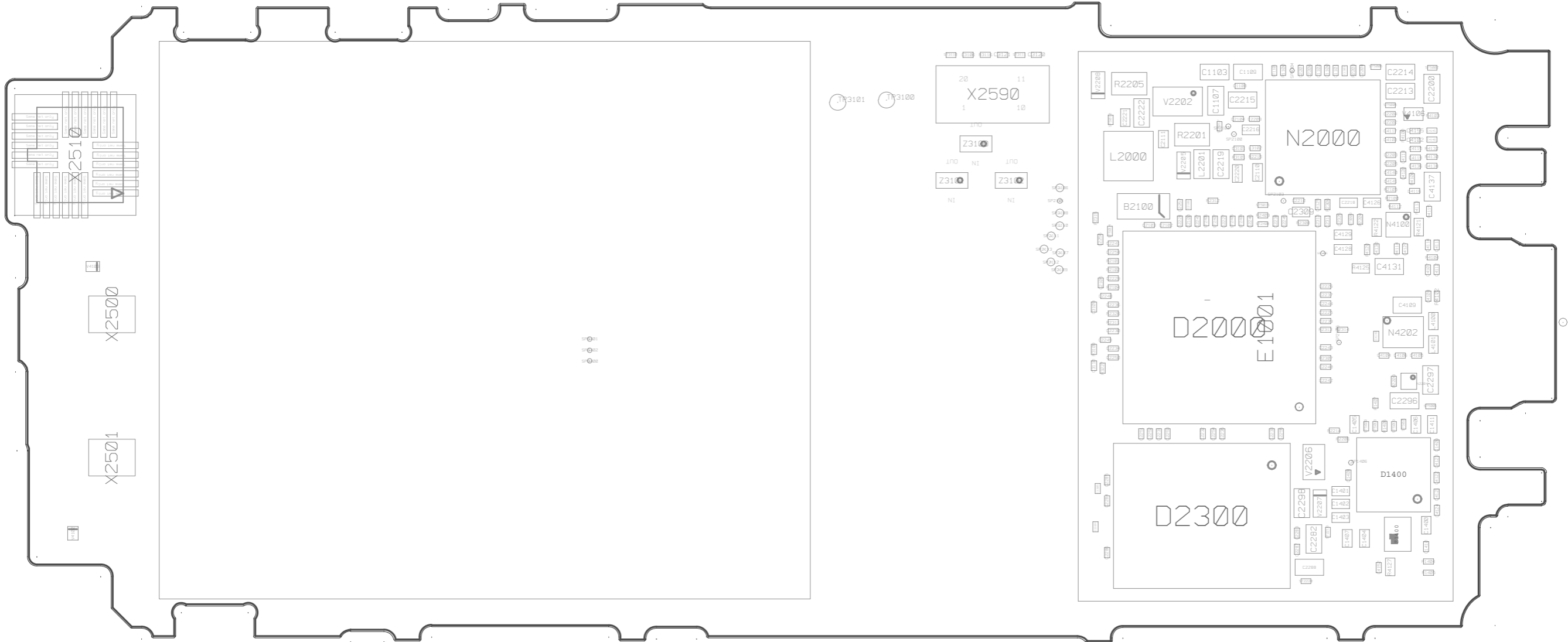
# 1 Mounting drawing table

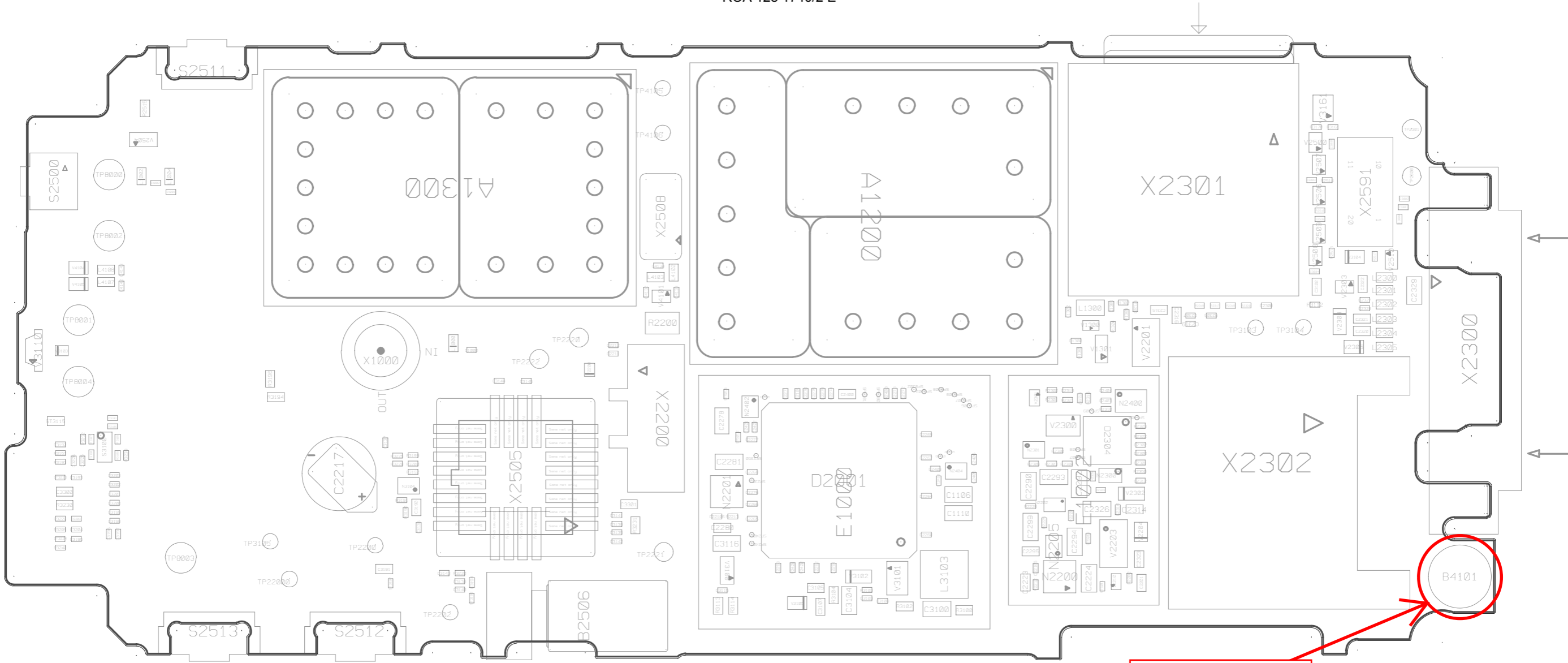
Board Number	Drawing	Comments
ROA 128 1740/2	1078-ROA 128 1740/2 Rev. E	1078-ROA1281740_2ENE.PDF

By using the “Search” function and enter the component name you can find the position of the component (Use Adobe Reader 7.0 or a later version). Example: You can see the component name highlighted on the circuit board (use zoom to enlarge).



## **2 Mounting drawing ROA 128 1740/2**





Ez a mikrofon. és a valóságban 4mm.

### 3 Revision history

<b>Rev.</b>	<b>Date</b>	<b>Changes / Comments</b>
A	2006-06-26	First release