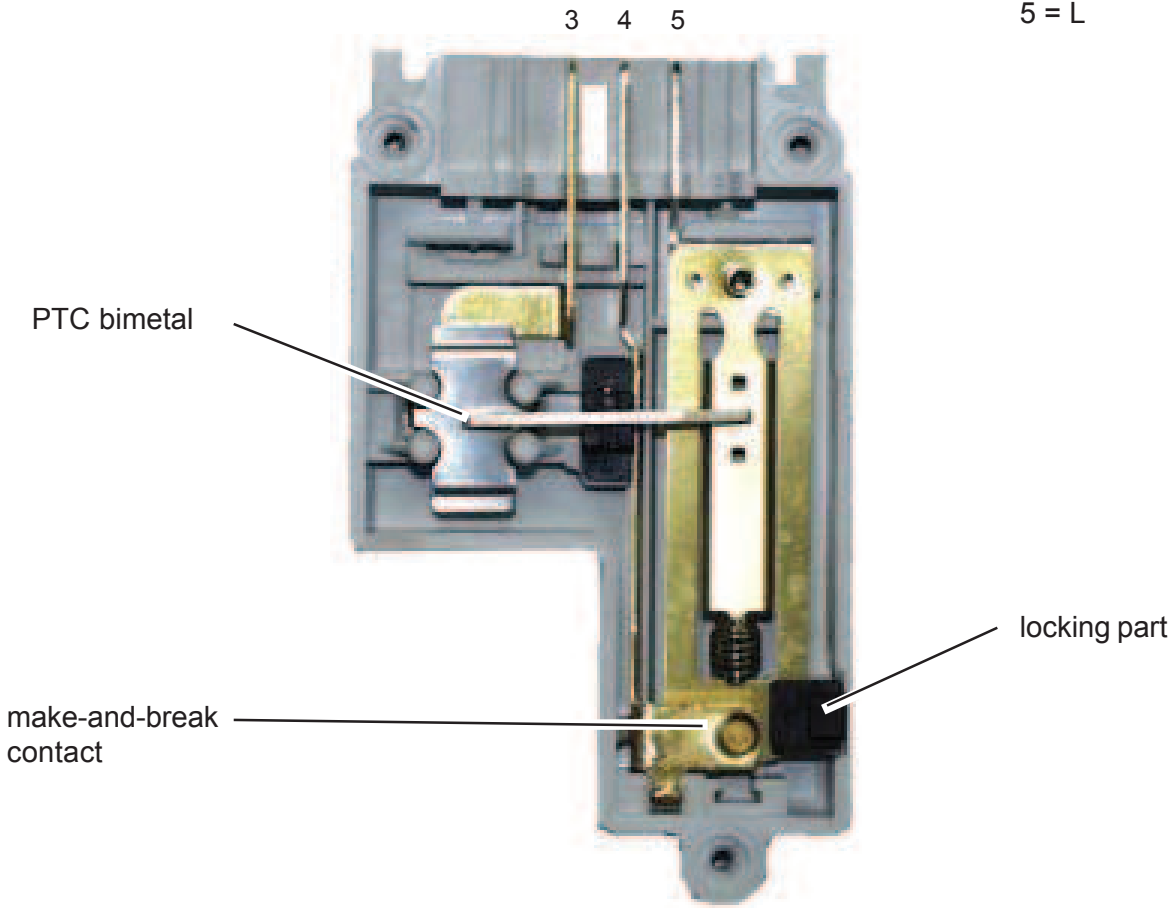


Door Lock

3 = N
4 = electronic J1-2
5 = L



When closing

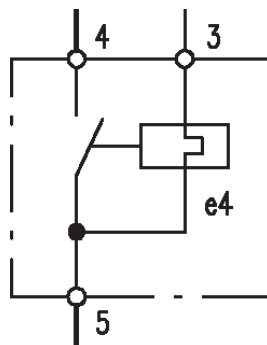
When the washing programme is started by pressing the START/ PAUSE button, the bi-metal PTC (contacts 3-5) is powered by the triac on the PCB: after 2-4 seconds, this closes the switch (5-4) which powers the electrical components of the appliance (only if the door is closed).

When opening

At the end of the washing programme, the PCB disconnects the interlock from the power supply, but the door remains locked for 1 to 2 minutes (PTC cooling time).

If there is a **power failure** during a wash cycle, the door lock requires approx. 2 min until the lid can be opened. During this time the PTC bimetal cools down and the locking part opens.

Circuit Diagram



Security:

(see page **Service - Program** fault display E40)