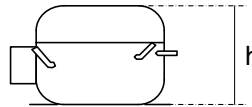


OPERATION:

Application:	L.B.P.	Max. Ambient Temp:	43°C
Refrigerant:	R134a	(1) Max. Steady Discharge Temp:	120°C
Operation:	Capillary	(1,2) Max. Peak Discharge Temp:	135°C
Cooling:	Static	Max. Steady Condensing Temp:	60°C
		(2) Max. Peak Condensing Temp:	70°C
		Max. Winding Temp:	130°C
		Max. Impurities:	30 mg
		Max. Total Compressor Water Content:	100 mg

COMPRESSOR:

Displacement:	7.39 cc	Oil Type:	Ester
Bore:	24.29 mm	(4) Viscosity:	15 cSt
Stroke:	15.94 mm	Suction Muffler:	Semi-direct
(3) Net Wt:	9.0 kg		
Case Size:	2 (h = 175 mm)		
Oil Charge:	210 cc		



ELECTRICAL:

Power Supply:	220 - 240V	Motor Type:	RSIR / RSCR *
Voltage Limits:	187 - 264V	Locked Rotor Current:	12.0 / 7.1 A**
Frequency:	50 Hz		
Phase:	1 ph		
		Main Winding Resistance at 25°C:	11.7 Ω
		Start Winding Resistance at 25°C:	18,8 Ω

* With Optional Run Capacitor

** Maximum current / Measured after 4 seconds

(1) Measured 5cm. from the shell with insulated thermocouples

(2) For transient conditions during 'Pull Down'

(3) Net weight is with oil but without electrics

(4) Measured at 40°C

For rated performance,

the suction line must be connected to the stub marked 'AS' on the attached drawing.

ELECTRICAL COMPONENTS:

ZEM Starting Device:	PTC- 8100	UH Starting Device:	PTC- 3003-x
(1) ZEM Starting Device:	PTC - 7100D6	UH PTC Resistance:	14 Ω
ZEM PTC Resistance:	14 Ω	Alt. UH Starting Device:	PTC- 3001-x
		ECC Starting Device:	K 100-xx
Run Capacitor:	4.0 μF		

-x PTC code for different contact versions

-xx Protector short code

PROTECTORS:

PROTECTORS	BDG ¾	Electrica ¾
Type	AE 15 BW x	T 0502 / kk
Open °C	125 - 135 °C	125 - 135 °C
Close °C	71 - 53 °C	70 - 55 °C
U.T.C	1.95 A 70 °C	2.37 A 70 °C
Time Check Current	8.20 A	9.00 A
Max. Current	16.0 A	17.0 A
Code (if any)	FQ	CE
Alt. protectors:	AF 15 BW x D6	

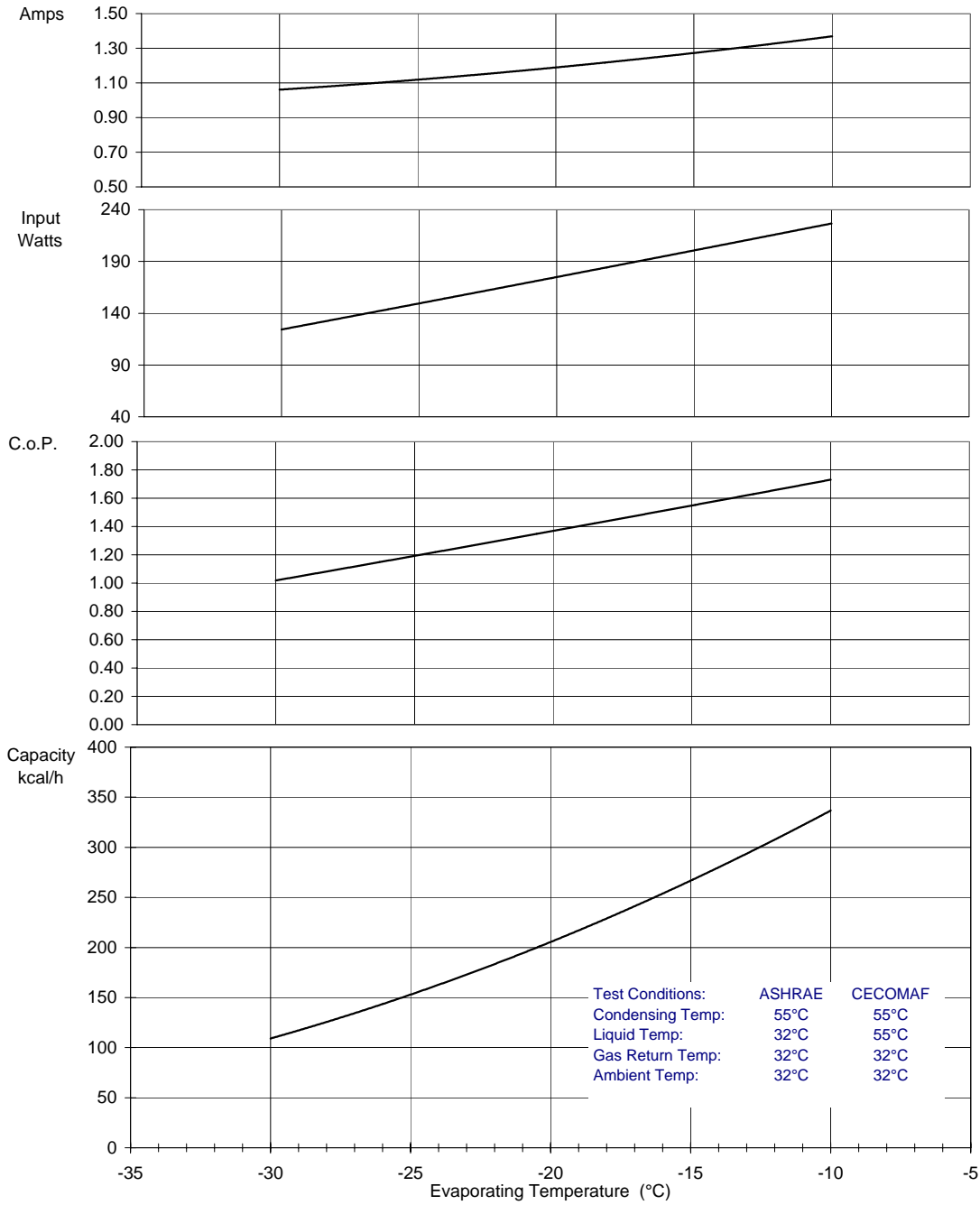
*BDG 'x' Codes: 6 for terminal boards Mod.89,90
8 for terminal board Mod.91
4 for UH protector with 6.3mm fast-on
5 for UH protector with M3.5 screw*

*Electrica 'kk' Codes: 05 for terminal boards Mod.89,90
07 for terminal board Mod.91
C5 for UH protector with M3.5 screw
C6 for UH protector with 6.3mm fast-on*

*Protectors with M 3.5 screws can be used on UH electric housings type SP-1454 (with connection board) and SP-1821 (without connection board) See drawings ELECTRICAL ASSEMBLY (FOR UH) number FTC15;16;17;18.
¾ protectors with 6.3mm fast-on can only be used on UH electric housing type SP-1821 (without connection board).*

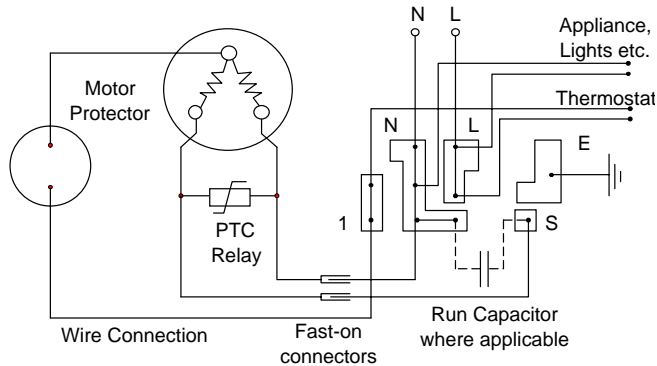
PERFORMANCE: (Graphs are at ASHRAE conditions)

220V 50Hz Without run capacitor

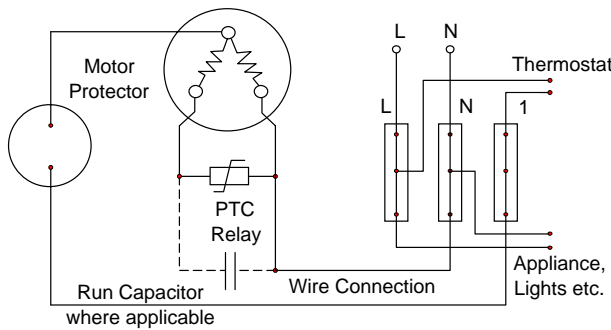


	Evaporating Temperature °C	-30	-25	-23.3	-20	-15	-10
ASHRAE:	Capacity Kcal/h	109	153	170	206	266	337
	C.o.P. W / W	1.02	1.19	1.25	1.37	1.55	1.73
CECOMAF:	Capacity W	104	145		195	252	319
	C.o.P. W / W	0.84	0.97		1.11	1.26	1.41
	Input Power W	124	150	158	175	200	227
	Current A	1.06	1.12	1.14	1.19	1.27	1.37

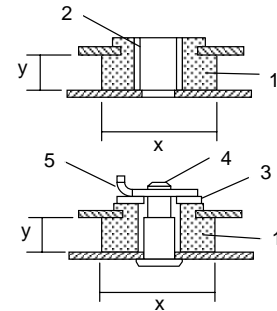
Circuit Diagram for Mod.90 Terminal Board



Circuit Diagram for U.H. Terminal Board



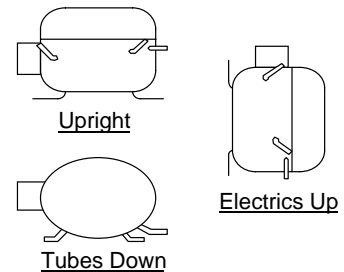
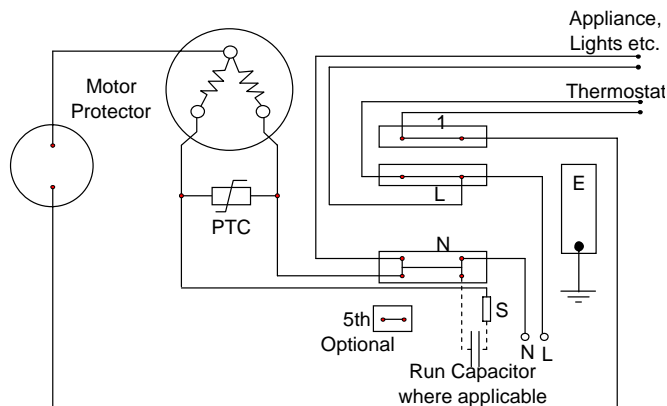
Mounting Accessories



- x = 26mm or 28.5mm
y = 9mm or 10.3mm
Other sizes available
1. Rubber grommet
2. Sleeve
3. Washer
4. Steel pin
5. Clip

Recommended Transport Positions when fitted into appliances

Circuit Diagram for ECC Terminal Board Frontal Version



Compressor Label

