

TV VIDEOLOGIE

23 cm

2/10/94

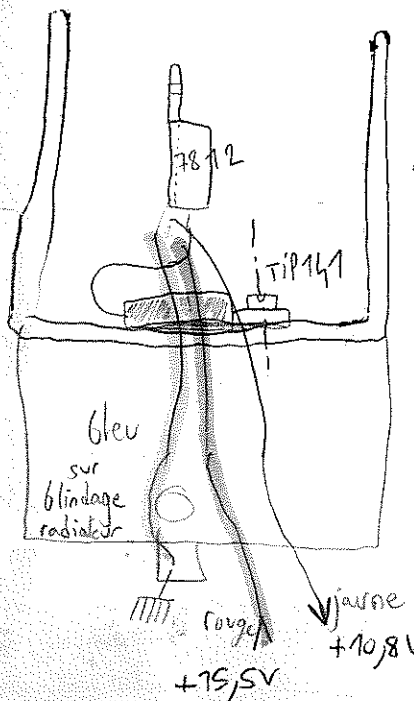
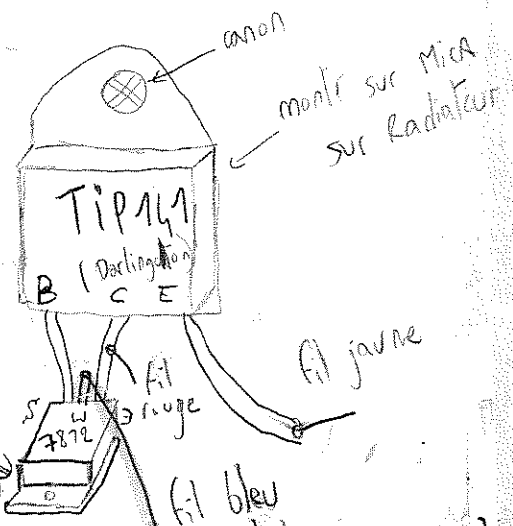
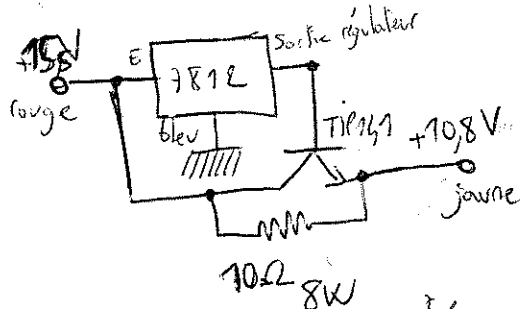
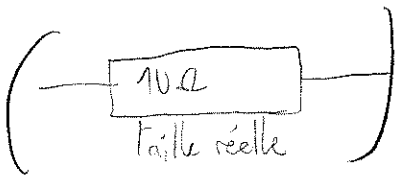
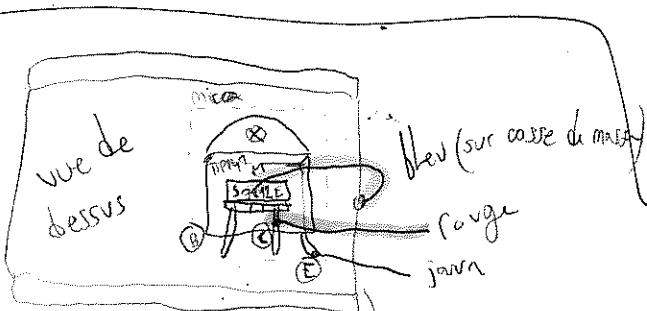
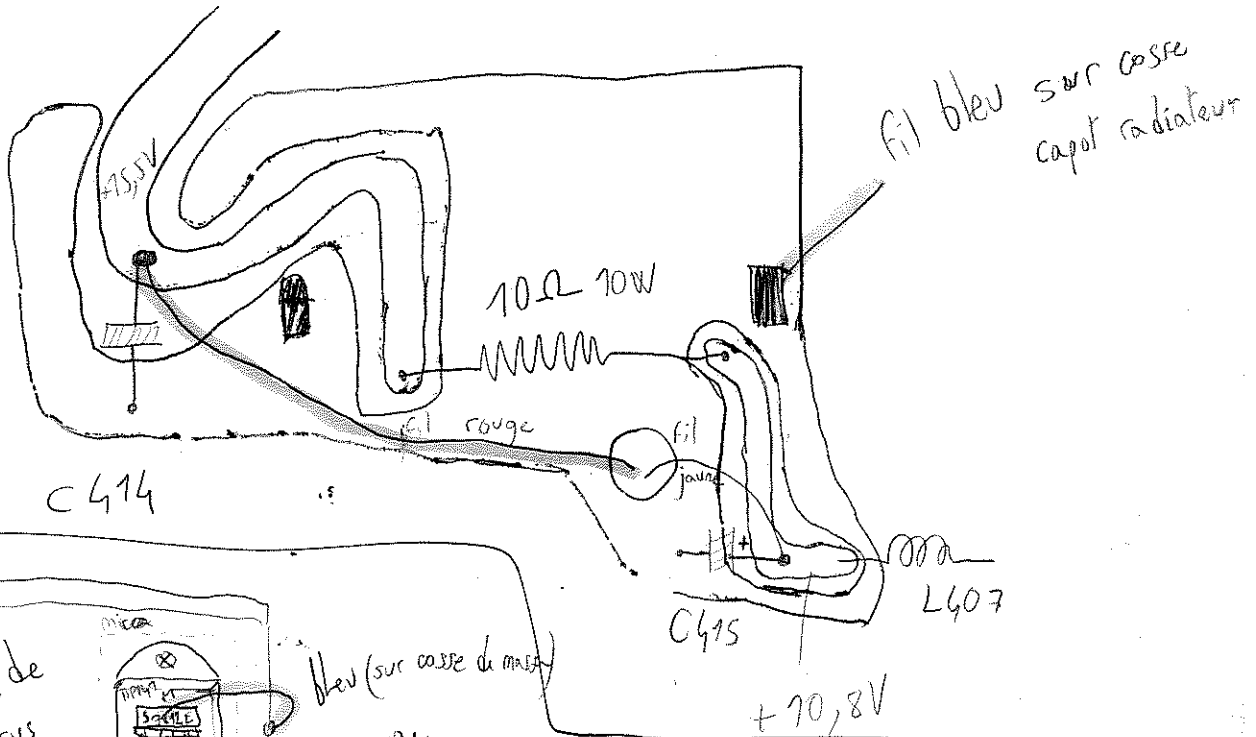
220V AC

MODULE CONVERTISSEUR 12V DC

7812

$R_{409} = 10\Omega$ (d'origine)

côté soudures



Matériel nécessaire

- 1 Transistor TIP141 (sur radiateur)
- 1 régulateur 7812 (hors radiateur)
- 1 résistance 10Ω 8W
- 1 mica + 1 canon + 1 vis Ø3

