

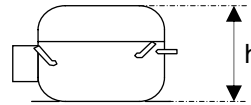
OPERATION:

Application:	L.B.P.	Max. Ambient Temp:	43°C
Refrigerant:	R600a	(1) Max. Steady Discharge Temp:	120°C
Operation:	Capillary	(1,2) Max. Peak Discharge Temp:	135°C
Cooling:	Static	Max. Steady Condensing Temp:	60°C
		(2) Max. Peak Condensing Temp:	70°C
		Max. Winding Temp:	130°C
		Max. Impurities:	30 mg
		Max.Total Compressor Water Content:	100 mg

COMPRESSOR:

Displacement:	11.2 cc	Oil Type:	Mineral
Bore:	25.40 mm	(4) Viscosity:	7 cSt
Stroke:	22.02 mm	Suction Muffler:	Semi-direct

(3) Net Wt:	9.3 kg
Case Size:	h = 167,0 mm
Oil Charge:	165 cc



ELECTRICAL:

Power Supply:	220 - 240V	Motor Type:	RSCR
Voltage Limits:	187 - 264V	Locked Rotor Current:	13.2 / 5.5 A**
Frequency:	50 Hz		
Phase:	1 ph		

Main Winding Resistance at 25°C:	15.2 Ω
Start Winding Resistance at 25°C:	11.3 Ω

** Maximum current / Measured after 4 seconds

- (1) Measured 5cm. from the shell with insulated thermocouples
- (2) For transient conditions during 'Pull Down'
- (3) Net weight is with oil but without electrics
- (4) Measured at 40°C

For rated performance,
the suction line must be connected to the stub
marked 'AS' on the attached drawing.
A run capacitor must be used with RSCR and CSR
compressors.



ELECTRICAL COMPONENTS:

Starting Device: K 100-xx
(1) Starting Device: PTC- 7100DT / 8100
PTC Resistance: 14 Ω

-xx Protector short code

Run Capacitor: 5.0 μF

PROTECTORS:

PROTECTORS	BDG ¾	Electrica	SENSATA 4TM
Type	AE 72 FU x	T 0762 / xx	4TM 293 NFBYY xx
Open °C	115 - 125 °C	115 - 125 °C	115 - 125 °C
Close °C	71 - 53 °C	70 - 52 °C	70 - 52 °C
U.T.C	2.1 A 70 °C	1.83 A 70 °C	2.15 A 70 °C
Time Check Current	8.6 A	7.30 A	9.2 A (5-15s)
Max. Current	17.0 A	20.0 A	21.6 A (2s max.)
Code (if any)	FP	H0	6L

Alt. protectors: AF 72 FU x
DT

PTC-71.. / 81.. are for Terminal Cover version only.

(1) BDG protector AF type is for use with PTC-71.. only, and PTC-71.. is only fitted with BDG protector.



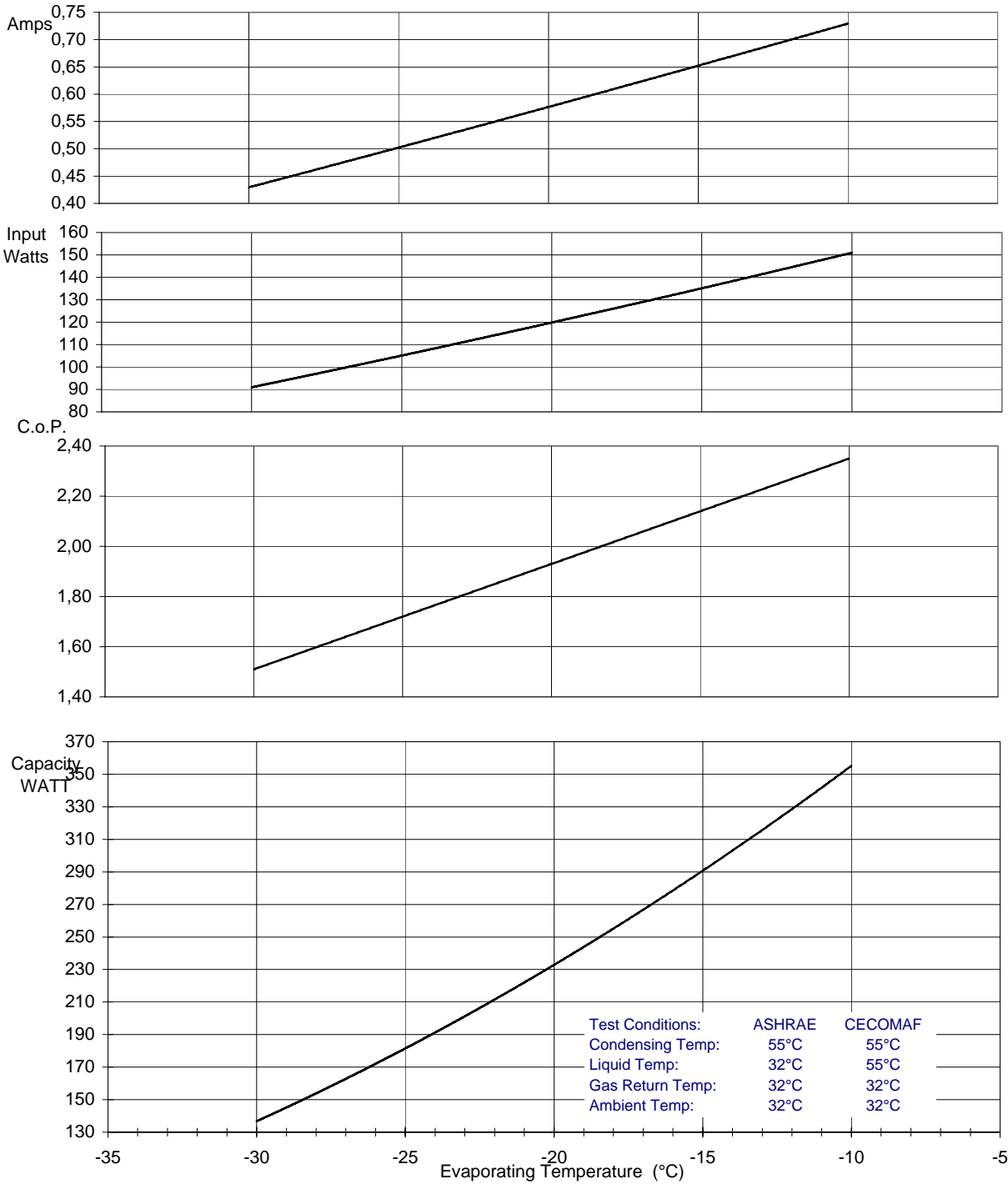
HKK12AA

PRODUCT SPECIFICATION

PERFORMANCE:

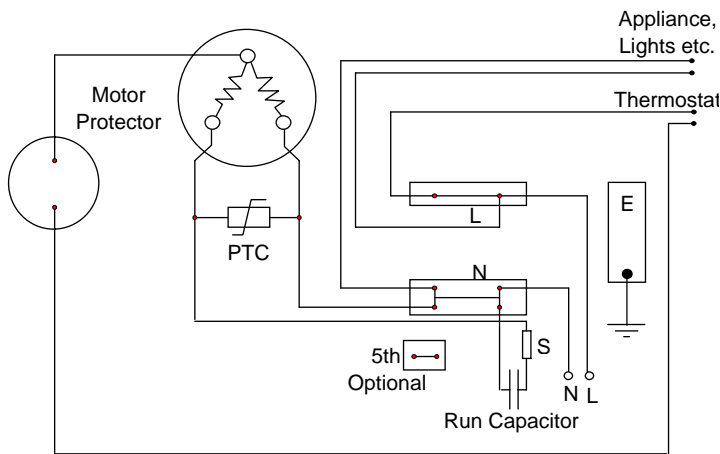
(Graphs are at ASHRAE conditions)

220V 50Hz

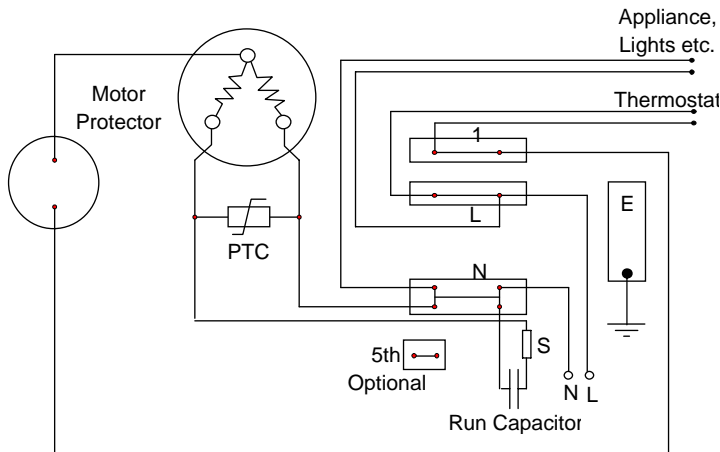


	Evaporating Temperature °C	-30	-25	-23,3	-20	-15	-10	
ASHRAE:	Capacity	W	137	181	198	233	291	355
	C.o.P.	W / W	1,51	1,72	1,80	1,93	2,14	2,35
CECOMAF:	Capacity	W	113	150		192	240	293
	C.o.P.	W / W	1,25	1,42		1,60	1,77	1,94
	Input Power	W	91	105	110	120	135	151
	Current	A	0,43	0,50	0,53	0,58	0,65	0,73

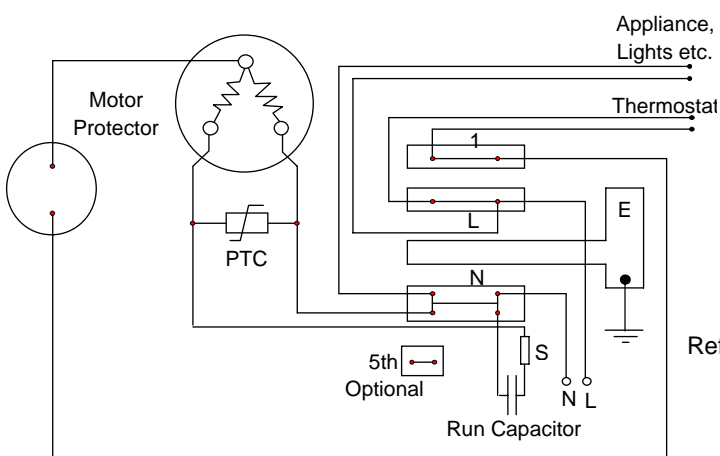
Circuit Diagram for Terminal Board Standard Version



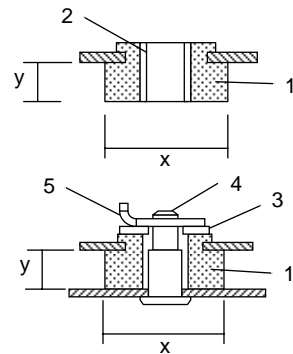
Circuit Diagram for Terminal Board Frontal Version



Circuit Diagram for Terminal Board Rast 5 Version



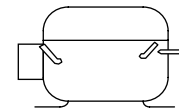
Mounting Accessories



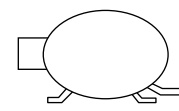
x = 26mm or 28.5mm
y = 9mm or 10.3mm
Other sizes available

1. Rubber grommet
2. Sleeve
3. Washer
4. Steel pin
5. Clip

Recommended Transport Positions when fitted into appliances



Upright



Tubes Down

Compressor Label

