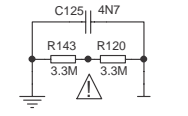


COMP.	14" CPT	21" CPT	COMP.	14" CPT	21" CPT	COMP.	14" CPT	21" CPT
C107	560PF	470PF	D123	1N4007	REM.	R128	REM.	820R
C109	6N8	3.3NF	D125	SS13	REM.	R129	REM.	1K
C124	REM.	2.2uF	I101	REM.	TCDT1101G	R130	REM.	180K
C128	10uF	470uF	J107	JUMPER	REM.	R131	REM.	2K7
C137	2200uF	4700uF	J108	JUMPER	REM.	R133	REM.	2K7
C138	REM.	22uF	J416	REM.	JUMPER	R135	REM.	4K7
C139	REM.	10nF	R102	2K2	18K	R140	REM.	130K
C140	REM.	100PF	R103	REM.	1M	R144	FR 0.5A	REM.
D105	LL4148	REMOVE	R104	REM.	OR	T101	REM.	BC848
D106	OR	LL4148	R105	REM.	4R7	T102	REM.	BC547
D108	REM.	LL4148	R112	47K	N.U.	T103	REM.	BTB08

DEGAUSSING SWITCHING CIRCUIT

R101	100K
T100	BTB08/600V
R119	220R/1W
I102	MOC3041
R133	2K7
R132	2K7
T103	BC857
R134	4K7
J109	REMOVE



SYSTEM VOLTAGE :110Vdc FOR 14" CPT
125Vdc FOR 21" CPT

DEGAUSSING SWITCHING CIRCUIT PART 2/2

This document was created with Win2PDF available at <http://www.win2pdf.com>.
The unregistered version of Win2PDF is for evaluation or non-commercial use only.
This page will not be added after purchasing Win2PDF.