

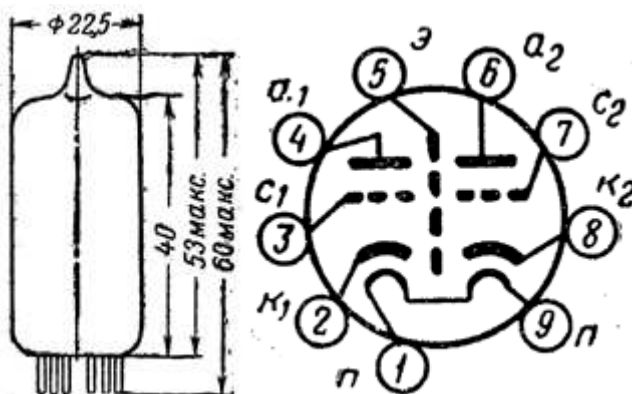
">

6N3P, 6N3PI, 6N3PE (6H3n, 6H3nN, 6H3nE)**General**

Double triodes, used as an wide band HF power amplifier and oscillator.

Envelope: glass.

Mass 16 g.

Lead diagram**General characteristics**

Type	6N3P	6N3PI	6N3PE
Filament voltage, Volt	6.3	6.3	6.3
Anode voltage, Volt	150	150	150
Grid voltage, Volt	--	--	-2
Resistance in cathode circuit, Ohm	240	240	--

Type	6N3P	6N3PI	6N3PE
Filament (heater) current, mA	350±35	350±35	350±35
Anode current, mA	8.75±2.75	8.5±3	8.75±3.25
Reverse grid current, mA	£0,1	£0,1	£0,1
Dissipate cathode-heater current, mA	--	--	--
Mutual conductance, mA/V	4.8-6	5.9±1.9	5.9±1.9
Gain coefficient	36±8	33±7	34±7
Input resistance (by f=60 MHz), kOhm	14	--	--
Equivalent noise resistance, kOhm	0.7	--	--
Vibration noise (by RA=2 kOhm), mV	£100	£15	£15
Inter electrode capacitance, pF:			
input	2.8	2.4±0,65	2.4±0,65
output	1.4	1.3±0.35	1.3±0.35
transfer	£1.6	£1.6	£1.6
Operation time, h	³1500	³500	³5000

Limited operating values

Type	6N3P	6N3PI	6N3PE
Filament voltage, V	5,7-6.9	5,7-6.9	6-6.6
Anode voltage, V	300	300	160
Grid voltage, V	--	--	--
Cathode - heater voltage, V	100	160	100
Cathode current, mA	--	18	12
Anode dissipation (on each triode), W	1.5	1.6	1.8
Each triode grid dissipation, W	--	0.1	--
Resistance in grid circuit, MOhm	--	1	1

Operating environmental conditions

Type	6N3P	6N3PI	6N3PE
Acceleration of vibration loads, g	2,5	6	10
by frequencies, Hz	--	10-600	20-600
Acceleration of multiple impacts, g	--	--	150
Acceleration of single impact, g	--	--	500
Continuos acceleration, g	-	--	100
Ambient temperature, °C	-60 to +70	-60 to +90	-60 to +150
Relative humidity at up to 40°C, %	98	98	98

Plate-grid and plate curves

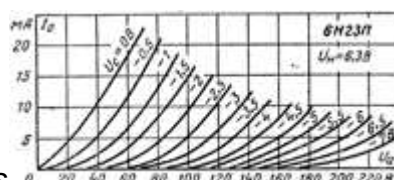
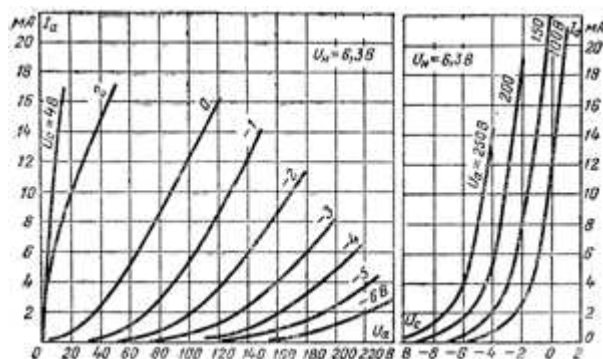


Plate curves

Plate-grid curves