



---

# Service Manual

## WASHING MACHINE

### AWM 827

---

Model AWM827/WP  
Version 8570 827 02030

Technical data	4812 712 50316
Spare parts list	4812 712 80694
Exploded view	4812 712 60237
Exploded view	4812 712 60159
Wiring diagram	4812 712 70301
Circuit diagram	4812 712 70302
Program diagram	4812 712 70044

**TECHNICAL DATA**

4812 712 50316

<b>1. Model</b>	AWM 827 - 12 programmes and the possibility of more combinations	
<b>1.1. Dimension</b>		
Height	85,0	cm
Width	59,6	cm
Depth	52,0	cm
<b>1.2. Weight</b>		
Net weight	ca. 82	kg
Without package	ca. 79	kg
<b>1.3. General specifications</b>		
Voltage	220 ± 10% / 50	V / Hz
Connected load	3100	W
Fuse	10	A
<b>1.4. Drum data</b>		
Volume	48	l
<b>1.4.1 Drum speed</b>		
Washing	50	rpm
Pre-spinning	120	rpm
Spinning low	600	rpm
Spinning high	850	rpm
<b>1.4.2. Loading</b>		
Capacity	max. 4,5 Dry laundry	kg
<b>1.5. Electrical building parts</b>		
<b>1.5.1. Heating</b>		
Type	Tubular radiator	
Rated power draft	approx. 1900	W
Mains Voltage	220	V
<b>1.5.2. Drain pump</b>		
Power consumption	approx. 30	W
Capacity	20 - 25	l / min
Rotation speed	approx. 2500	rpm
Height of draining hose	max. 0,90 min. 0,60	m m
<b>1.5.3. Motor</b>	AC - SERIES	
<b>1.5.4. Timer</b>		
Crouzet Typ 914/1426		
The timer program chart includes 3 basic programmes	-normal washing -delicate washing -wool	
<b>1.5.5. Thermostat</b>		
A - a fixed thermostat	37 ± 3	°C
B - an adjustable thermostat	10 - 90	°C

**1.6 Pressostat**

without laundry

Low level

11 ± 1

|

High level

18 ± 1

|

Safety level

26 ± 1

|

**1.7. Push button switch unit**

Version with 2 buttons having switches for

-On/Off

-Rinsing stop

**1.8. Control unit**

A1 D23 (4819 214 78323)

Connection of the control unit

W - Washing

contacts 7-27 and alternative

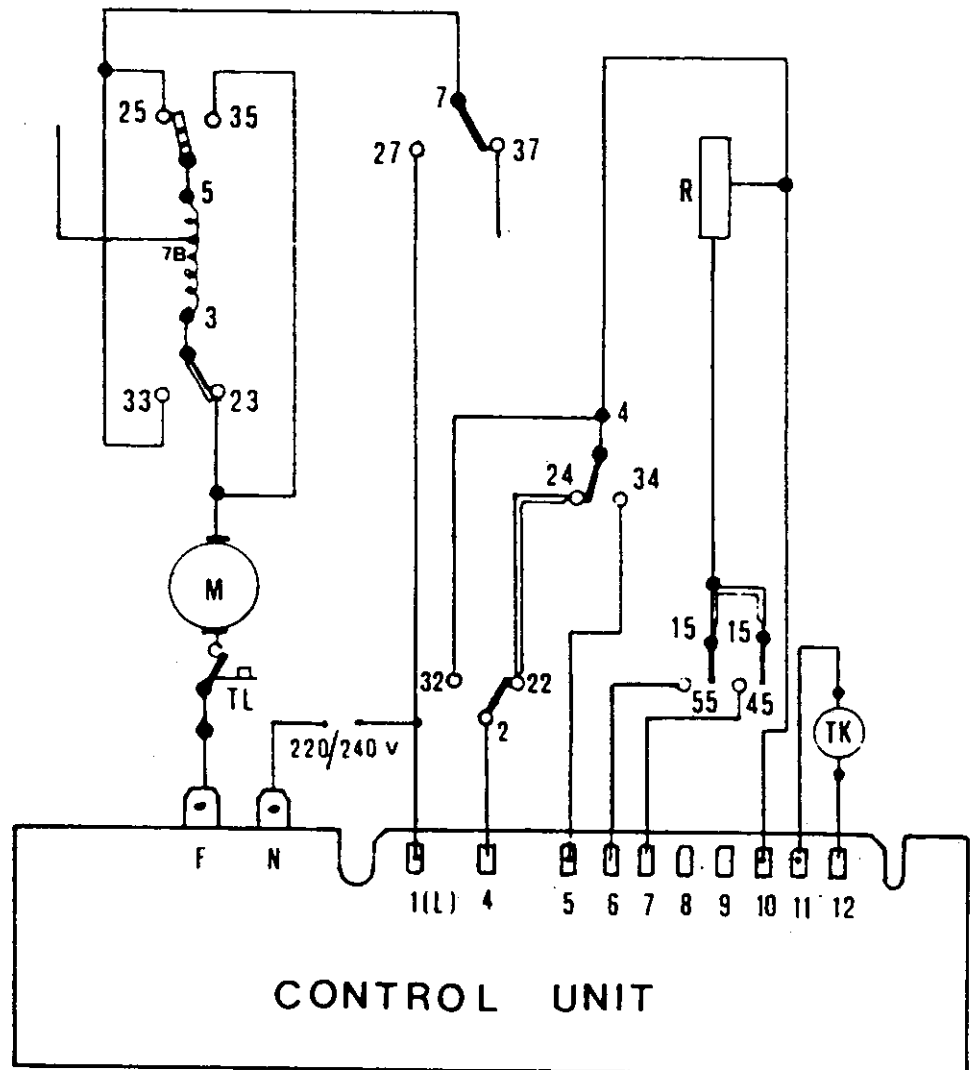
3-23/ 5-25, 3-33/ 5-25

D - Pre-spinning

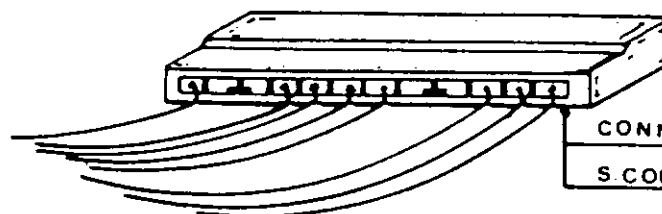
contacts 3-23/ 4-34/ 5-25

S - Spinning

contacts 3-23/ 5-25/ 7-37



4812 712 70055



CONNECTING BLOCK

S. CODE 4819 466 98611

Model  
 Service No.  
 Version

AWM827/WP  
 857082702030  
 8570 827 02030

Pos. No.	12 NC Code	Description	from	to
001 0	4819 440 19564	Cabinet		
011 0	4819 462 48157	Foot adjustable		
013 0	4819 462 79121	Foot, fix		
021 0	4819 440 19559	Front		
024 0	4819 440 19537	Panel, rear		
025 0	4819 404 78667	Holder		
030 0	4819 440 19562	Table top		
034 0	4819 492 68458	Fastener		
034 1	4819 532 68243	Bushing		
041 0	4819 417 19232	Hinge		
053 0	4819 440 19299	Plinth		
054 0	4819 535 78092	Rotary locking		
083 0	4819 466 48115	Friction plate		
086 0	4819 492 68215	Spring		
110 0	4819 498 69247	Handle,door		
131 0	4819 404 48484	Lock plate		
133 0	4819 401 18538	Hook		
133 1	4819 535 38062	Shaft Hooh		
141 0	4819 450 69519	Door glass		
143 0	4819 532 28159	Front,decorat		
144 0	4819 532 28161	Frame,glassdoor		
291 0	4819 466 69797	Gasket		
301 0	4819 453 19099	Control panel		
303 0	4819 498 69857	Handle, drawer		
331 0	4819 413 78658	Knob Timer		
331 4	4819 505 18004	Nut		
332 0	4819 410 28462	Button		
335 0	4819 412 49616	Knob,thermostat		
341 0	4819 412 49526	Indication disc		
351 0	4819 134 28035	Pilot lamp		
421 0	4819 121 18183	Interf.filter		
430 0	4819 360 18209	Pump,draining		
432 0	4819 360 78311	Pump body		
490 0	4819 321 18136	Cable,mains		
491 0	4819 290 68166	Connect.block		
501 0	4819 282 18547	Timer		
521 0	4819 214 78323	Unit,electrical		
554 0	4819 271 28678	Thermostat adjustable		
572 0	4819 281 28235	Valve,magnet		
583 0	4819 271 28713	Pressostat		
620 0	4819 276 28113	Switch,pushbut.		
630 0	4819 690 18108	Switch, door door		
701 0	4819 530 28759	Hose, inlet		
708 0	4819 530 28793	Hose inside		
711 0	4819 418 78751	Conveyor		
712 0	4819 418 78752	Drawer dispenser		
714 0	4819 440 19252	Cover plate		
718 0	4819 530 28594	Siphon		
760 0	4819 480 58106	Cover,pump		
781 0	4819 530 28847	Hose,draining		
783 0	4819 530 28808	Hose pressostat		
791 0	4819 466 69598	Gasket top		
791 1	4819 466 69597	Gasket bottom		
794 0	4819 466 69704	Gasket and filter		
794 1	4819 310 38057	Gasket		

Model  
Service No.  
Version

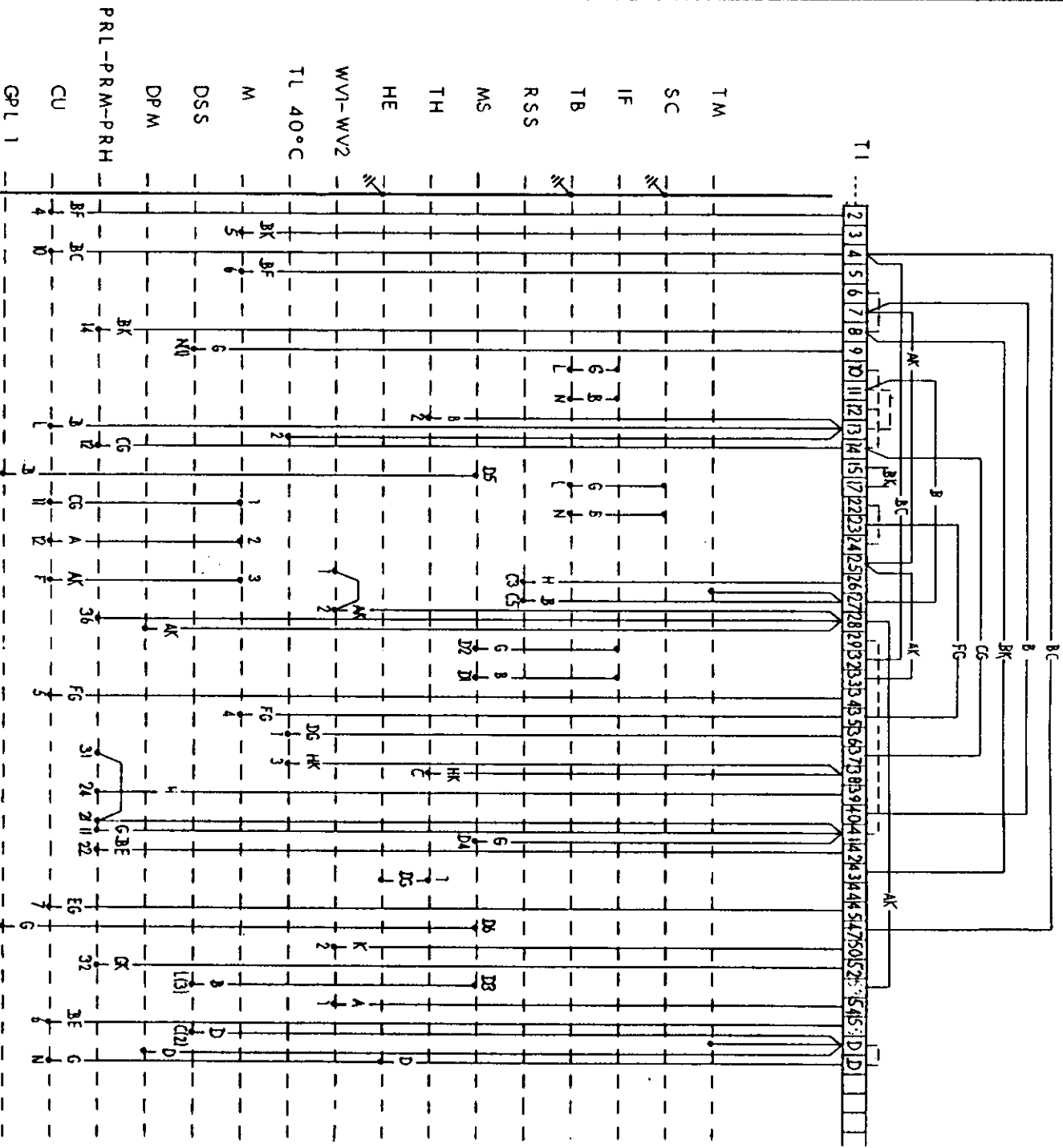
**AWM827/WP**  
**857082702030**  
**8570 827 02030**

Pos. No.	12 NC Code	Description	from	to
061 0	4819 466 89118	Counter weight top		
061 1	4819 466 89078	Counter weight bottom		
083 1	4819 466 88986	Plate tub		
144 1	4819 492 68888	Strap porthole seal		
144 2	4819 492 68515	Strap porthole seal		
190 0	4819 466 69828	Seal,porthole		
200 0	4819 418 18294	Tub		
201 0	4819 418 78808	Bottom tub		
201 1	4819 532 28209	Ring Tub		
210 0	4819 535 78138	Crosspiece,drum		
220 0	4819 418 18291	Drum		
271 0	4819 358 18123	Belt,driving		
272 0	4819 528 88075	Pulley Drum		
401 0	4819 361 58137	Motor		
401 1	4819 310 88529	Brush,carbon		
451 0	4819 259 28684	Element,heating		
551 0	4819 271 28776	Thermostat		
708 1	4819 530 28868	Hose		
754 0	4819 526 48255	Drainhose inner Tub/Pump		
787 0	4819 530 28773	Drainhose inner		
901 0	4819 401 18529	Clamp,hose		
901 1	4819 492 68061	Clamp,hose		
912 1	4819 310 38631	Set screw		
912 2	4819 310 38685	Set screw		
914 0	4819 505 18541	Nut		
941 0	4819 310 38743	Bearing, kit		
951 0	4819 466 68679	Ring		
952 0	4819 466 69882	Gasket thermostat		
990 0	4819 310 38683	Fastener counter weight top		
990 1	4819 310 38684	Fastener counter weight bottom		

Model  
Service No.  
Version

AWM827/WP  
857082702030  
8570 827 02030

Pos. No.	12 NC Code	Description	from	to
902 1	4819 401 18384	Holder,hose outside		
902 2	4819 404 49832	Holder control unit		
902 3	4819 466 88781	Plate porthole frame		
903 0	4819 401 18607	Clamp bushing		
903 1	4819 462 48049	Silent block		
912 0	4819 502 38005	Screw		
931 0	4819 492 38102	Spring		
932 0	4819 492 48144	Spring		



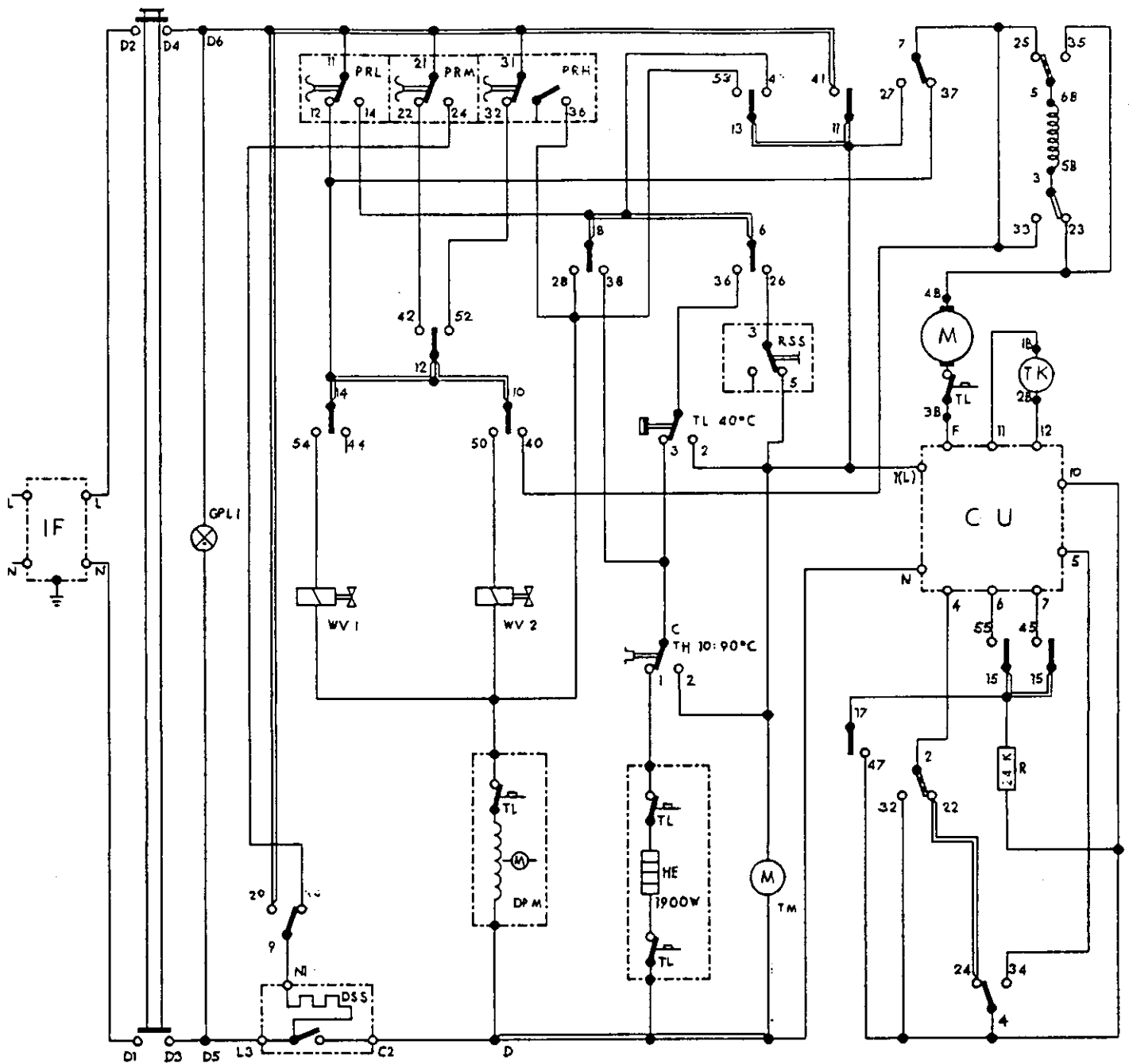
4812 712 70301 285 2396/1

- CHWS HOT/COLD WASH SWITCH
- CU CONTROL UNIT
- DPM DRAIN PUMP MOTOR
- DSS DOOR SAFETY SWITCH
- DP M ECO
- PRL-PRM-PRH THERMOSTOP
- GPL 1 ADDITIONAL RINSE
- GLP1 PTC-UNIT
- GLP2 PILOT LAMP
- GW LAMP DOOR SAFETY BLOCK
- HE GENTLE WASH
- IF HEATING ELEMENT
- LLS INTERFERENCE FILTER
- M 2 kg MOTOR
- MS MAIN SWITCH
- PRH HIGH LEVEL PRESSOSTAT
- PRL LOW LEVEL PRESSOSTAT

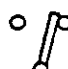


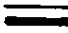
- PRM MIDDLE LEVEL PRESSOSTAT
- RSS RINSE STOP SWITCH
- RW RAPID WASH
- SC MAINS CABLE
- SDP SPIN-DRY POTENTIOMETER
- SPH HEATING SAVETY PRESSOSTA
- SSS LOW SPINNING SWITCH
- SW SHORT WASH
- TH TERMINAL BOARD
- TB THERMOSTAT 10-90 DEGREE
- TM ADJUSTABLE
- TL THERMOSTAT 40 DEGREE FIXED
- TL THERMOSTAT 60 DEGREE FIXED
- TL SAFETY THERMOSTAT 107 DEGREE
- TM TIMER MOTOR
- WV1 WATER VALVE WASH
- WV2 WATER VALVE PRE-WASHING

----- THE CONTACTS ARE  
CONNECTED INSIDE THE TIMER

- A BLACK
- B BROWN
- C RED
- D ORANGE
- E YELLOW
- F GREEN
- G BLUE
- H VIOLET
- K WHITE
- L LIGHT BLUE



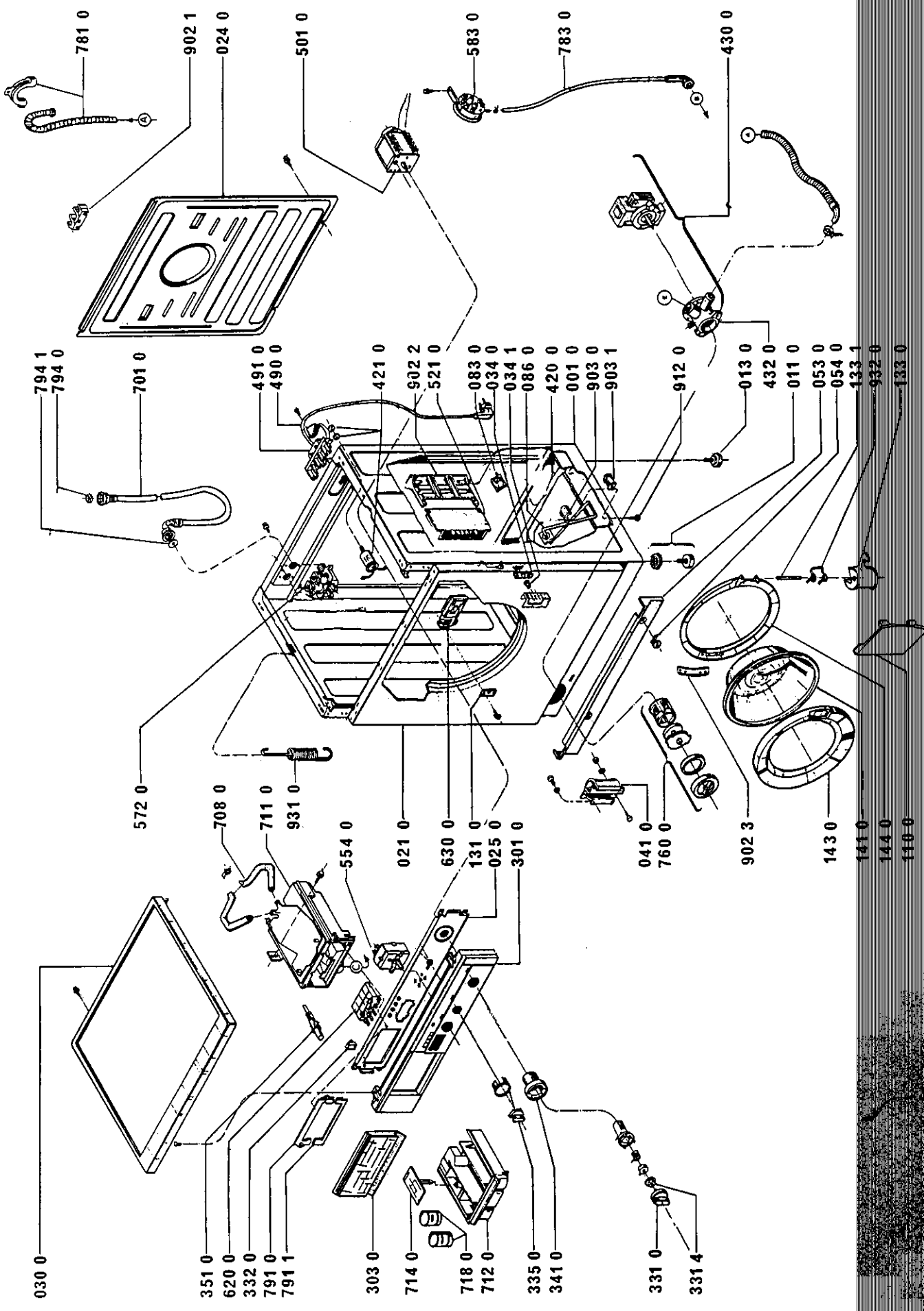
4812 712 70302 285 2396/1

-  REVERSER CONTACTS OPERATED BY THE FAST CAMS
-  TIMER CONTACTS OPERATED BY THE SLOW CAMS
-  DOUBLE ACTION CONTACTS (OPERATED BY THE FAST CAMS DURING WASHING)
-  CONNECTIONS INSIDE THE TIMER

**NOTICE**

- THE PUSH BUTTON SWITCHES ARE SHOWN IN NOT PUSHED-IN POSITION
- TIMER IN 60th POSITION (STOP)





030 0

351 0  
620 0  
332 0  
791 0  
791 1

303 0  
714 0  
718 0  
712 0

335 0  
341 0

331 0  
331 4

572 0  
708 0  
711 0  
931 0

554 0  
021 0  
630 0  
131 0  
025 0  
301 0

041 0  
760 0

902 3  
143 0  
141 0  
144 0  
110 0

794 1  
794 0

701 0

491 0  
490 0

421 0  
902 2  
521 0

083 0  
034 0  
034 1  
086 0

420 0  
001 0  
903 0  
903 1

912 0

013 0  
432 0  
011 0

053 0  
054 0  
133 1  
932 0  
133 0

781 0

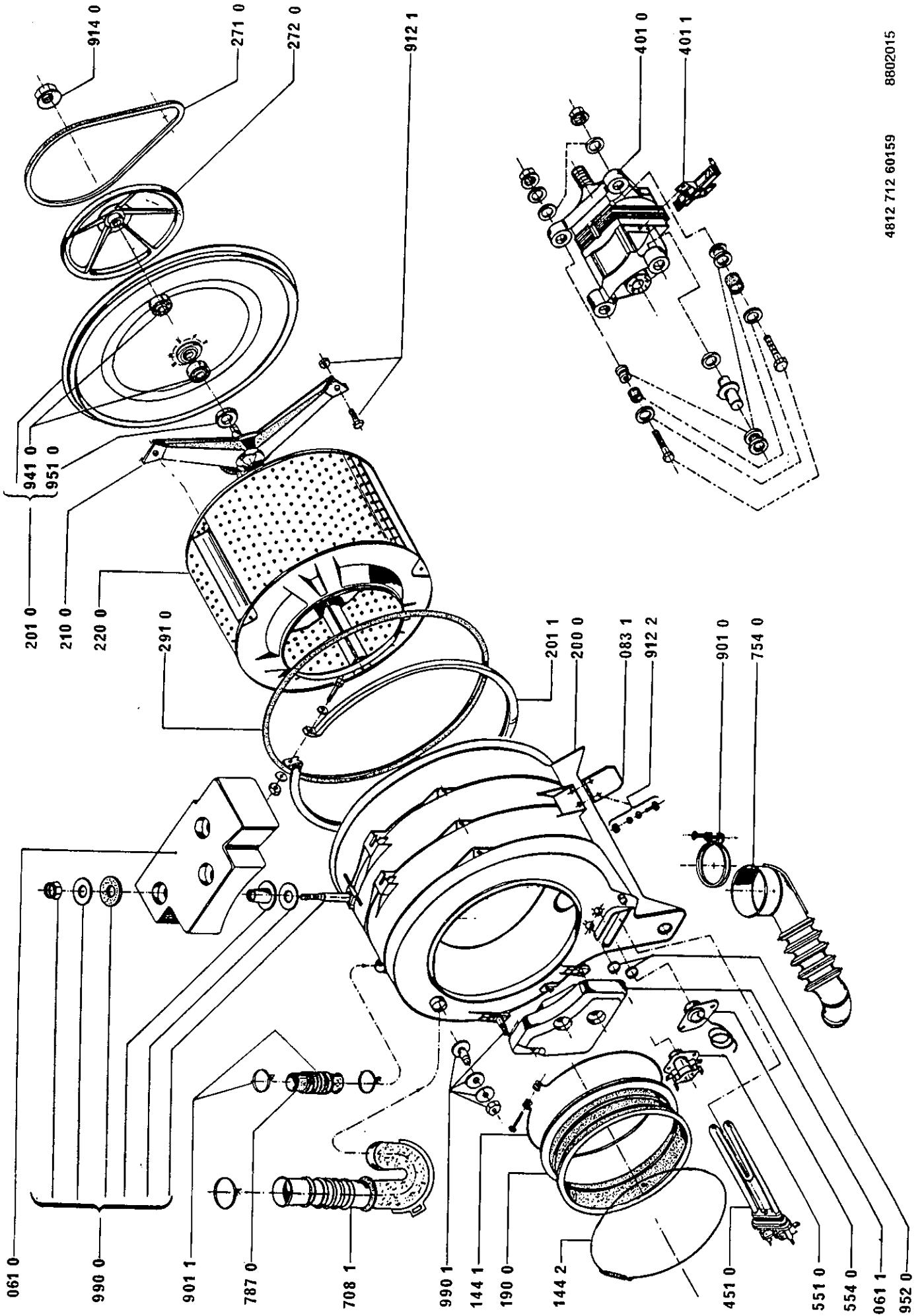
902 1  
024 0

501 0

583 0

783 0

430 0



4812 712 60159 8802015

