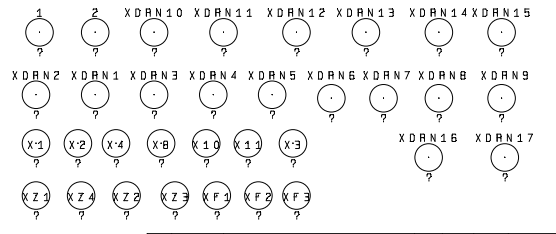


TABLE 1- COMPONENT APPLICATION

REF DES	BK350	BK500	BK350I	BK500I
MV1	380-2302	380-2302	NOT USED	NOT USED
MV2	380-2302	380-2302	NOT USED	NOT USED
MV3	380-1505	380-1505	380-3000	380-3000
MV5	380-2302	380-2302	380-3600	380-3600
MV6, MV7	380-1752	380-1752	380-0011	380-0011
L1	420-0053	420-0053	420-0016	420-0016
CB, C7, C4, C27	225-0472	225-0472	225-1103	225-1103
RB, 14, 15, 28	173-2152	173-2152	173-1072	173-1072
R61	173-4122	173-3482	173-4992	173-4992
R4	349-0003	349-0003	329-7002	329-7002
RY2	450-2156	450-2156	450-2152	450-2152
RY1	JP1, JP2	JP1, JP2	450-2150	450-2150
RB, Q15	325-0019	325-0031	325-0019	325-0031
Q5, Q31	325-0005	325-0005	325-0016	325-0016



REVISIONS

REV	ECO	DESCRIPTION	DNW	CHK	APVL	DATE
D3		REV CRAP VALVER W/AS, CB, C7, C27	PAJ	MC	MC	
D2		REV CRAP VALVER AT TABLE 1, CEN, D48, R6	PAJ	MC	MC	
D1		RELEASED	PAJ	MC	MC	

APC AMERICAN POWER CONVERSION

SCHEMATIC

TITLE: MT. MCKINLEY

MODEL #: BK350/500/350I/500I

DATE: 10/20/00

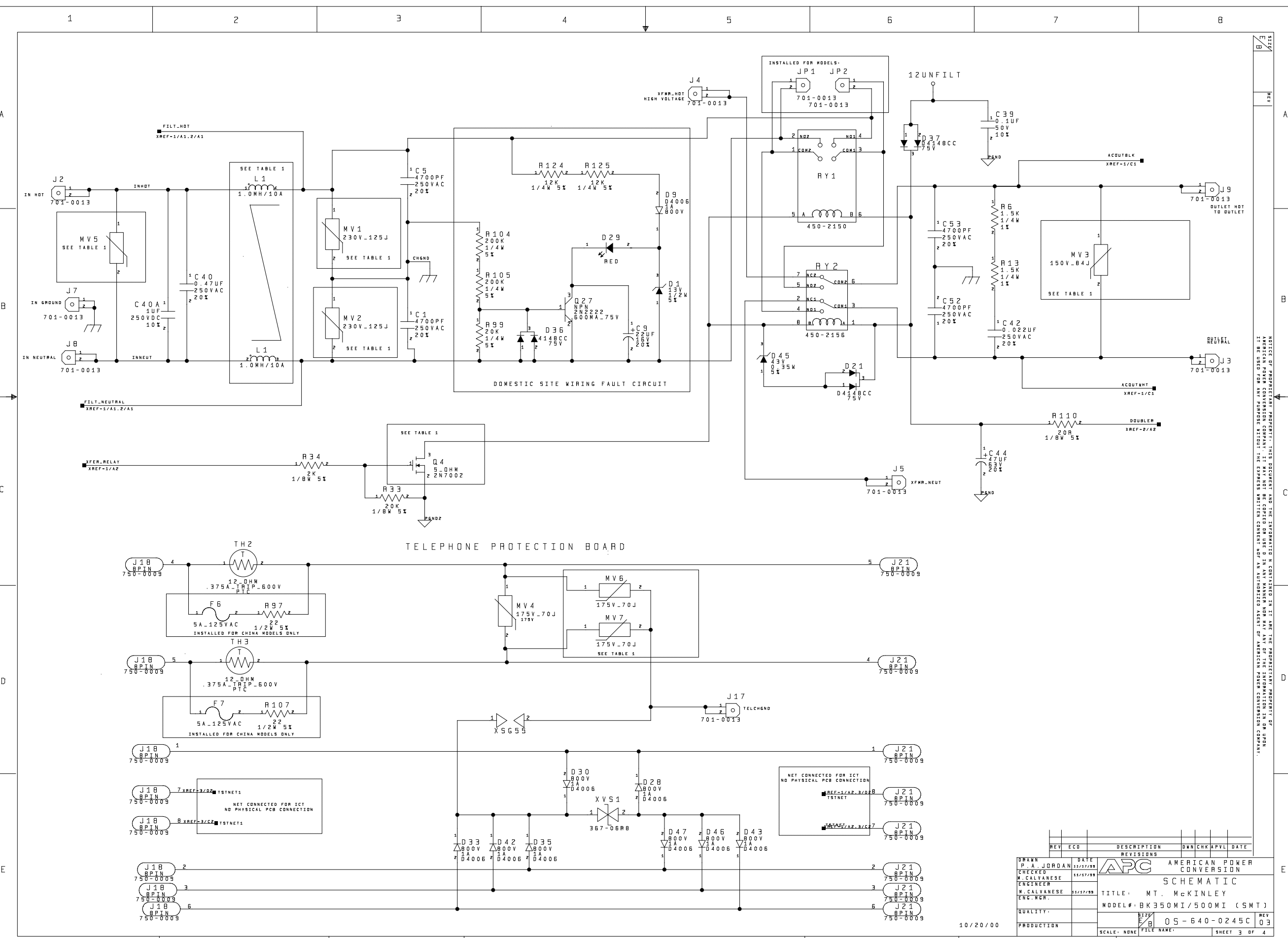
SCALE: NONE

SHEET 1 OF 4

LAST REF DES USED

B6	D50	IC8	L3	R125	T1	Y2
BZ1	FB	J21	MV7	RY2	TH3	
C54	H55	JP2	Q31	SW1	U2	

NOTICE OF PROPRIETARY RIGHTS: THIS DOCUMENT AND THE INFORMATION CONTAINED HEREIN ARE THE PROPRIETARY PROPERTY OF AMERICAN POWER CONVERSION COMPANY. IT MAY NOT BE COPIED OR REPRODUCED IN ANY MANNER WITHOUT THE EXPRESS WRITTEN CONSENT OF AMERICAN POWER CONVERSION COMPANY.



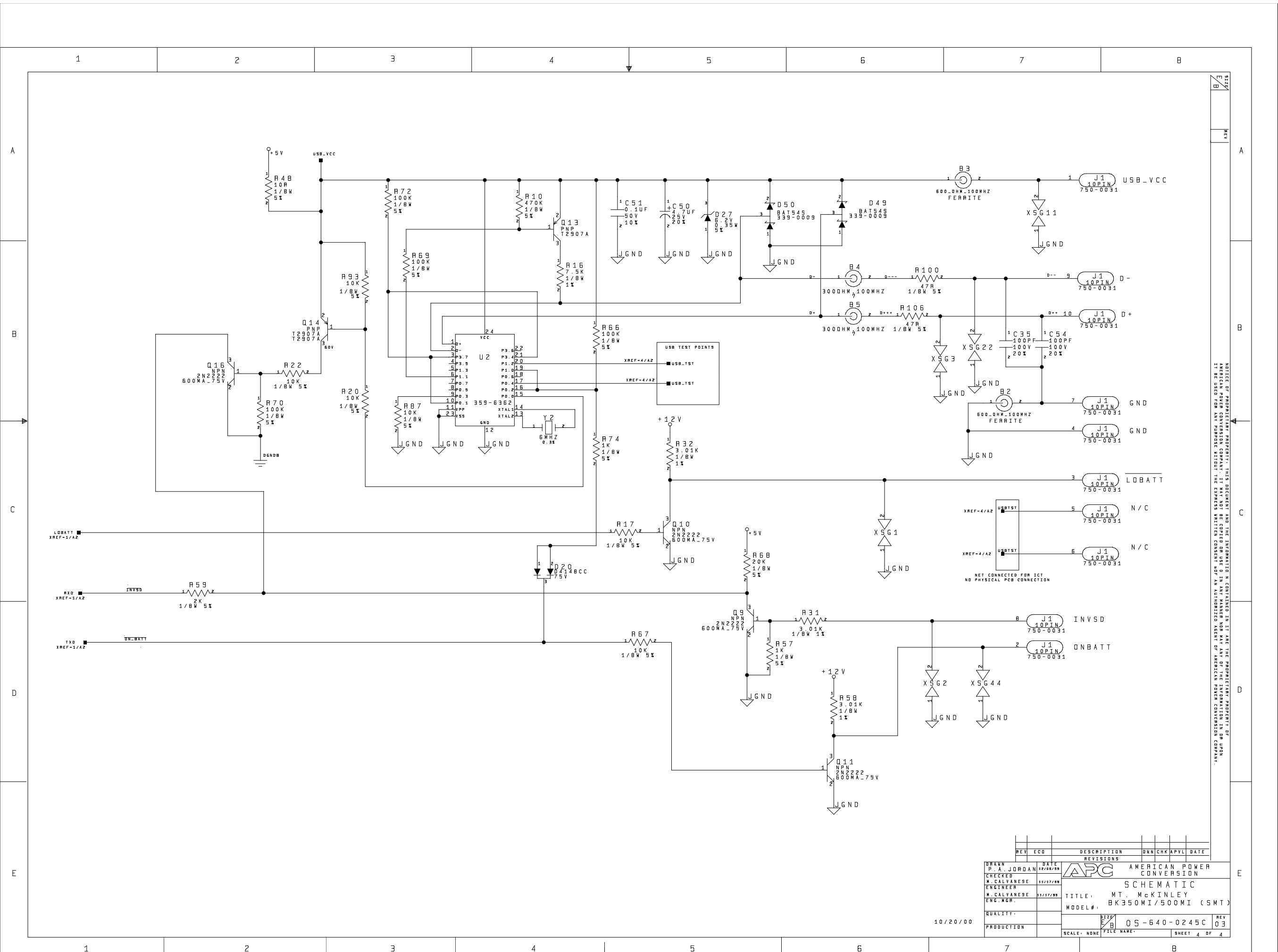
NOTICE OF PROPRIETARY PROPERTY: THIS DOCUMENT AND THE INFORMATION CONTAINED IN IT ARE THE PROPRIETARY PROPERTY OF AMERICAN POWER CONVERSION COMPANY. IT MAY NOT BE COPIED OR USED IN ANY MANNER NOW OR IN THE FUTURE WITHOUT THE WRITTEN PERMISSION OF AMERICAN POWER CONVERSION COMPANY.

REV	ECO	DATE	DESCRIPTION	OWN	CHK	APVL	DATE
			REVISIONS				

DRAWN	P. A. JORDAN	DATE	11/17/99
CHECKED	M. CALVANESE	DATE	11/17/99
ENGINEER	M. CALVANESE	DATE	11/17/99
ENG. WR.			
QUALITY			
PRODUCTION			

APC AMERICAN POWER CONVERSION	
SCHEMATIC	
TITLE: MT. MCKINLEY	
MODEL#: BK350MI/500MI (SMT)	
REV	03
SCALE: NONE	FILE NAME:
SHEET 3	OF 4

10/20/00



NOTICE OF PROPRIETARY PROPERTY: THIS DOCUMENT AND THE INFORMATION CONTAINED HEREIN ARE THE PROPRIETARY PROPERTY OF AMERICAN POWER CONVERSION COMPANY. IT MAY NOT BE COPIED OR USED IN ANY MANNER NOT AUTHORIZED BY AMERICAN POWER CONVERSION COMPANY. IT IS BE USED FOR ANY PURPOSE WITHOUT THE EXPRESS WRITTEN CONSENT OF AN AUTHORIZED AGENT OF AMERICAN POWER CONVERSION COMPANY.

REV	ECD	DESCRIPTION	DNW	CHK	APVL	DATE

DRAWN P. A. JORDAN DATE 3/27/08/08	APC AMERICAN POWER CONVERSION
CHECKED M. CALVANESE ENGINEER DATE 5/5/07/08	SCHEMATIC
ENG. MGR. M. CALVANESE DATE 5/5/07/08	TITLE: MT. MCKINLEY MODEL #: BK350MI/500MI (SMT)
QUALITY:	10/20/00
PRODUCTION:	05-640-0245C REV 03 SCALE: NONE FILE NAME: SHEET 4 OF 4