

Vigyázní kell a VT2 tranzóra, mert különbözőhetnek a kivezetések elrendezési.

116.08 | 82.93

116.08 | 00.00

2BEEED

1W9X

-
LND DC
+

EMF

ALFA

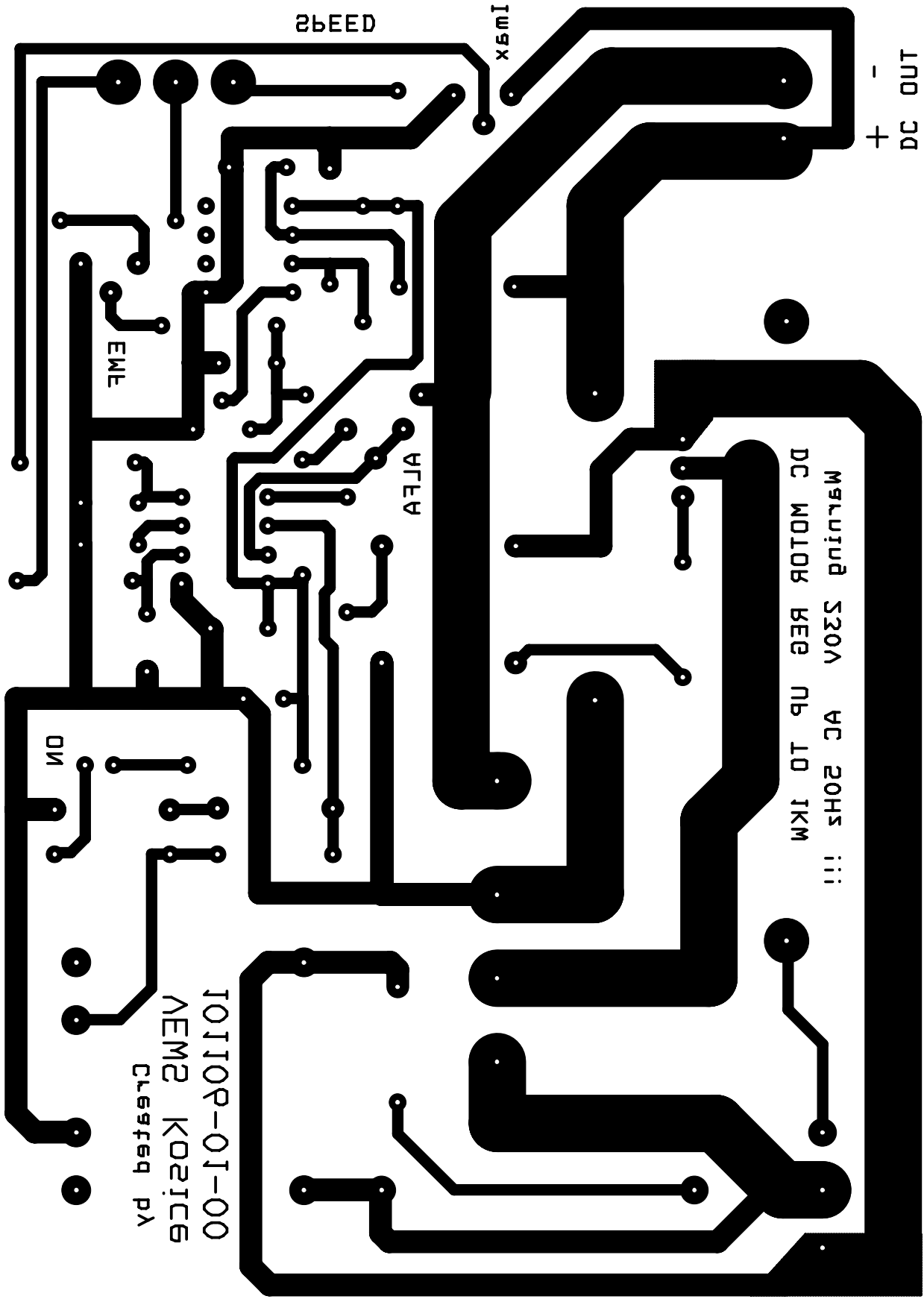
MARUJUD S30A AC 20HS !!!
DC MOTOR REG NP 10 1KM

ON

10110P-01-00
NEM2 K021C6
Cresfed pa

82.93 | 00.00

00.00 | 00.00



**DC regulator up to 1KW
(Fr.N. 101106-01-00)**

Nr.	Quantity	Reference	Value	Type	Order No.	Supplier	Note
1	1	B2	KBPC 2506W	KBPC2506W	13233	SOS	
2	1	CH1	Heatsink	ZH-7845/80AL	65797	SOS	
3	3	C1,C5,C8	220	CDC5 220pF Y5V	56215	SOS	
4	1	C2	3n3	EGPU 3300pF K5000	13502	SOS	
5	1	C3	220n	KDPU Y5V RM5 220nF	19871	SOS	
6	1	C4	470n/275V	R46 470nF RM22,5	39807	SOS	
7	1	C6	100n	KDPU Y5V RM5 100nF	33067	SOS	
8	1	C7	47M	ELRA SD 47uF 35V	64415	SOS	
9	2	D1,D2	6V2	BZX 85C 6V2	14208	SOS	
10	2	D3,D4	BAV21	BAV21 AMMO	13593	SOS	
11	1	D5	LED	L-934 LYD	12257	SOS	
12	1	P1	500k	64 Y 500K	18036	SOS	
13	1	P2	100	64 Y 100R	18025	SOS	
14	1	P3	10k	64 Y 10K	18031	SOS	
15	1	P4	47k	CIP 160C LIN 47K	15950	SOS	
16	1	R1	1k	RM 1% 1K	30867	SOS	
17	2	R2,R6	47	RM 1% 47R	30715	SOS	
18	1	R3	180	RM 1% 180R	30780	SOS	
19	1	R4	33k	RM 1% 33K	31038	SOS	
20	1	R5	27k	RM 1% 27K	31028	SOS	
21	2	R7,R10	100k	RM 1% 100K	31095	SOS	
22	1	R8	1k5	RM 1% 1.5K	30885	SOS	
23	1	R9	47k	RM 1% 47K	31057	SOS	
24	1	R11	2M2	RM 1% 2.2M	31217	SOS	
25	1	R12	4k7	RM 1% 4.7K	30943	SOS	
26	2	R13,R14	3k9	RM 1% 3.9K	30933	SOS	
27	1	R15	0.1/5W	R5W 0.1R	5231	SOS	
28	1	TR1	220V/24V/1W	M44126	12863	SOS	
29	1	TR2	TOROID 20x7mm	B64290-L632-X27			2x20turns
30	1	U1	U2008	U2008B			
31	1	U2	LM358	LM358N	17785	SOS	
32	1	VT1	TIC246M	TIC 246M	19305	SOS	
33	1	VT2	BS250	BS250	13955	SOS	
34	1	X1	MV253	MV253-5,08-V	51448	SOS	
35	1	X2	MV252	MV252-5,08-V	51447	SOS	