

# «LanComBox»

...

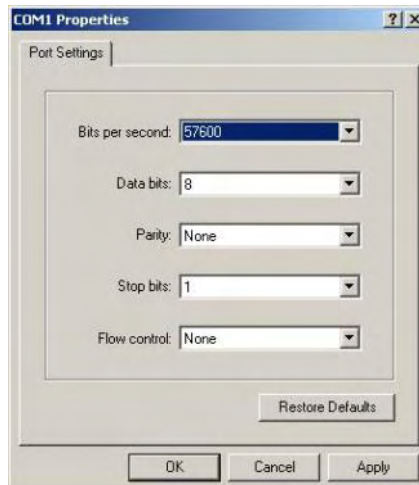
1. «HyperTerminal».
2. > «HyperTerminal»;  
( : lancombox)



3. «Connect using»:  
COM1, «OK»



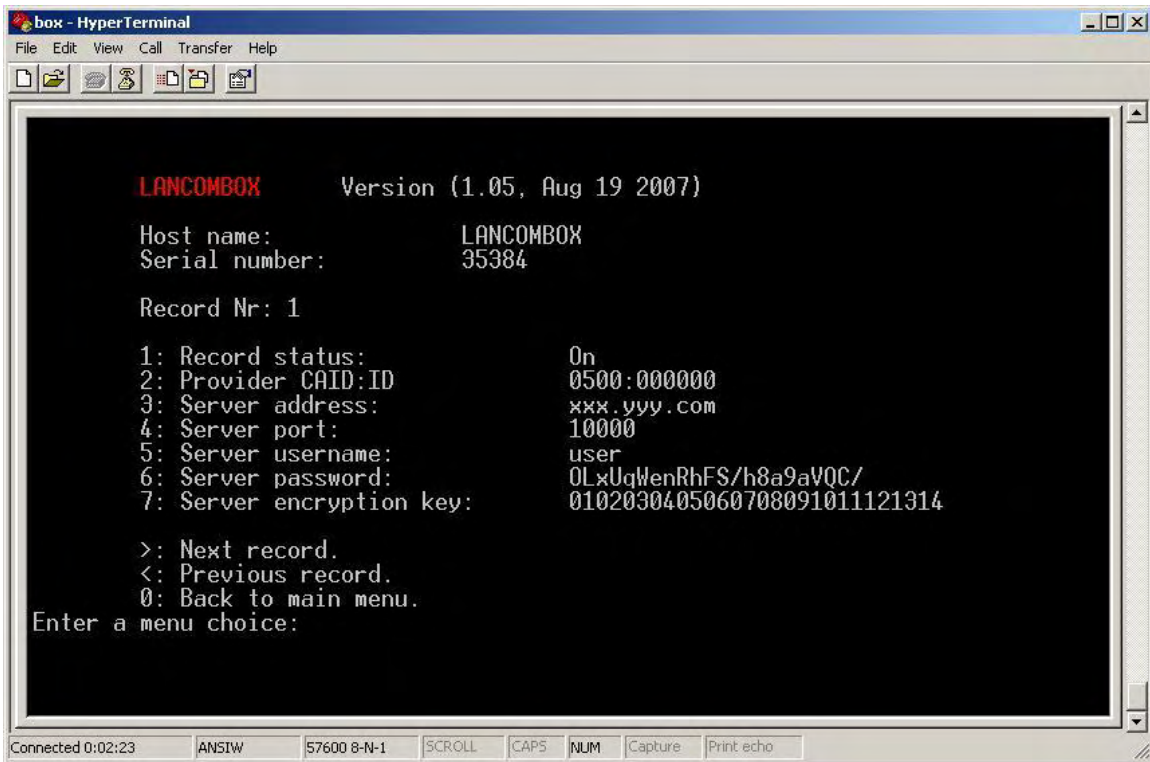
4. «OK».





- 7:** Disc. If not active (30s): On – Off ( «On») , LanComBox 30 ( ) .
- T:** Receiver type: OPENBOX ( !).
- E:** Edit provider record: – , .
- R:** Reset to default settings: – « ».
- 0:** Save & Quit: «0».

(E: Edit provider record),



...

- 1:** Record status: On – / .
- 2:** Provider CAID:ID – CAID:ID «:», :  
0500020710 + « » ( - 0500:020710).
- 3:** Server address: – ( :  
192.168.124.25 [www.share.com](http://www.share.com)).
- 4:** Server port: – ( : 10000).

5: Server username: - ,  
16 .

6: Server password: - , 16  
!

: «Password encrypting, please wait 5 sec.» ( « »,  
, 5 ).

7: Server encryption key: - , .

>:, <:

0: «0» ,  
«0».

, .  
COM -  
( Openbox - 300, 800, 810, 820, 730, 750, 770),  
0/12 . LAN .

!  
57600, -  
12 .