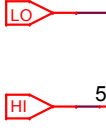
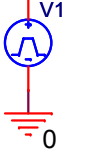


V1 = 0
V2 = 12
TD = 100m
TR = 3n
TF = 3n
PW = {pw}
PER = {per}



U1A
CD4013A

In_1

reset
2.8e-7[sec]

U7A
CD4011A

U5A
CD4011A

+10V

BS250/PLP
P-MOSFET
M3

R1
1k

R4
68k

C1
10u

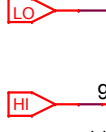
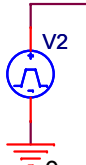
Uki

V

BS107A/PLP
N-MOSFET
M4

R2
1k

V2 = 0
V2 = 12
TD = {100m+td}
TR = 3n
TF = 3n
PW = {pw}
PER = {per*1.005}



U1B
CD4013A

In_2

PARAMETERS:
CD4000_VDD = +10V

FREKV = 5
FAZISFOK = {fok}

PER = {1/Frekv}
PW = {1/Frekv/20}
TD = {Fazisfok/(360*Frekv)}

fok = 0

5

4

3

2

1