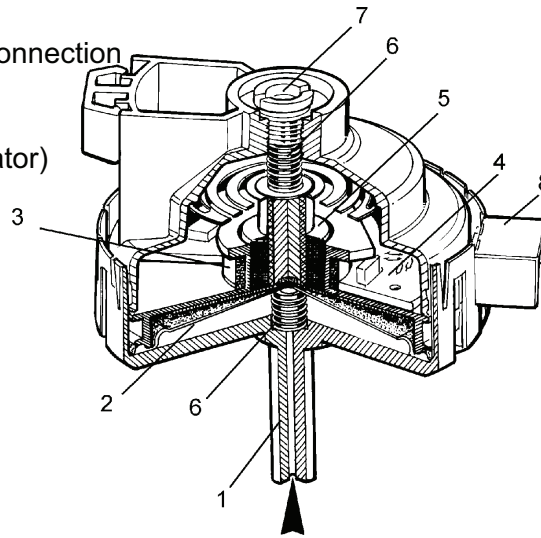


Analogic pressure switch

The analogic pressure switch controls the water level in the tub, it is directly connected to the electronic modul.

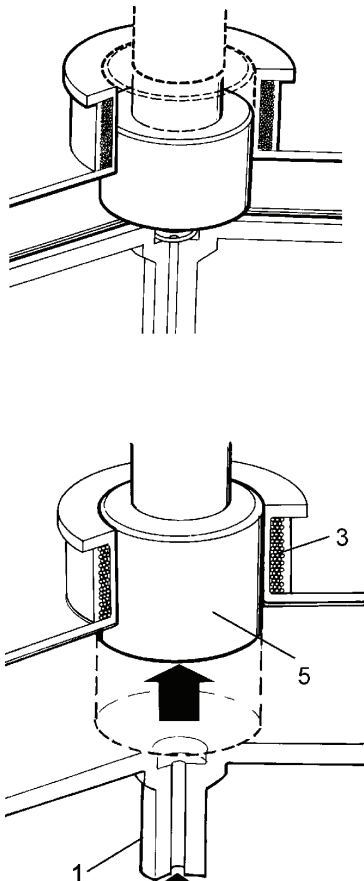
If the pressure switch does not work correctly, the programm in progress is cancelled:

- 1. Pressure switch hose connection
- 2. Diaphragm
- 3. Coil (self)
- 4. Electronic circuit (oscillator)
- 5. Magnet
- 6. Spring
- 7. Adjusting screw
- 8. Connector
- Kontakt 1 = Out
- Kontakt 2 = GND
- Kontakt 3 = 5V DC



When the tub is full, the pressure inside the hydraulic circuit acts on the diaphragm which moves the magnet inside the coil.

This moving modifies the inductance of self and consequently the frequency delivered by the scillatory circuit. the μP , after frequency reading, recognizes the water level inside the tub. (see Page **Service - Program** fault display E30)



Frequency delivered follow the pressure (± 50 Hz)

