

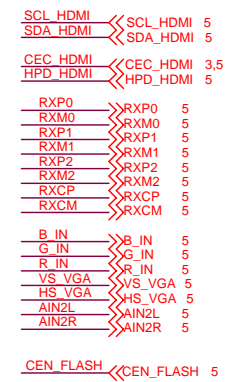
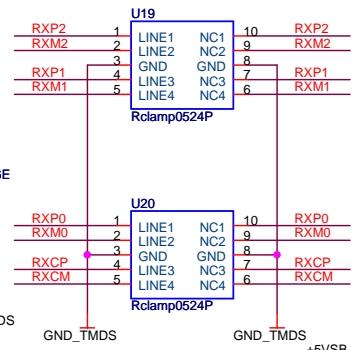
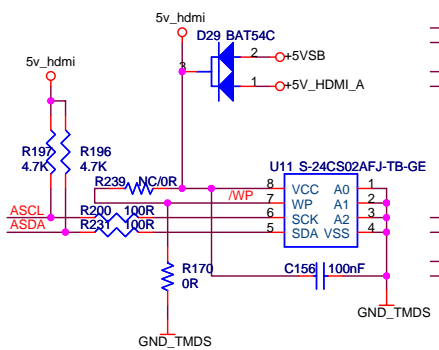
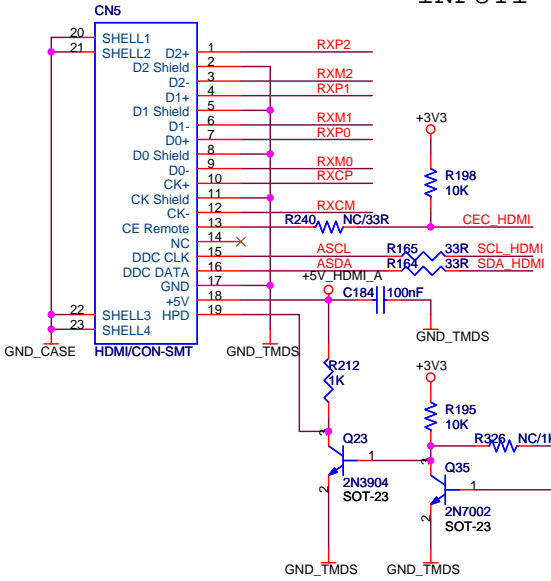
		Title SVP7050P SP-700	
Schematic Name POWER		Rev 0.2	
Size B	Sheet 1 of 8	Date: Monday, August 03, 2009	

Layout Note
differential impedance 100ohm

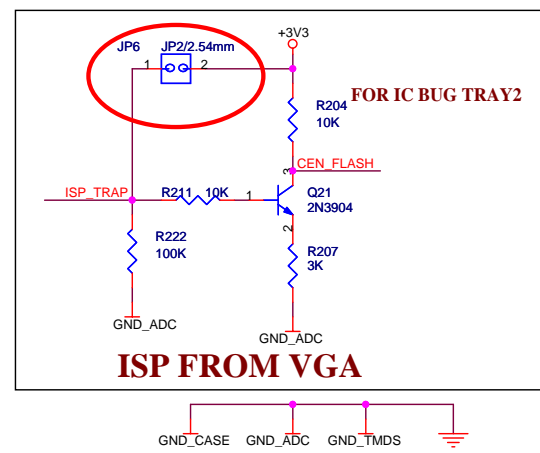
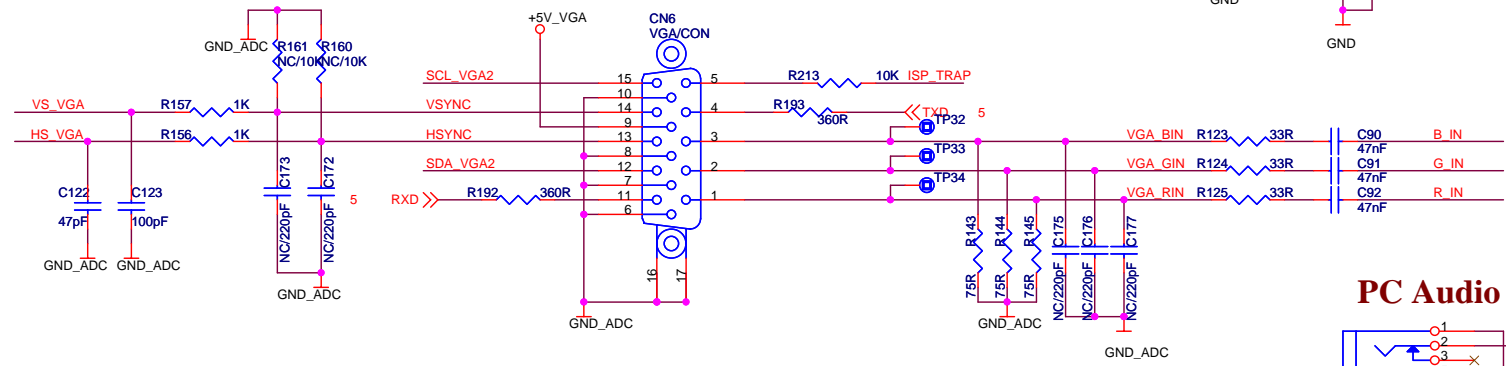
EDID Default: NOT write protect

HDMI Input

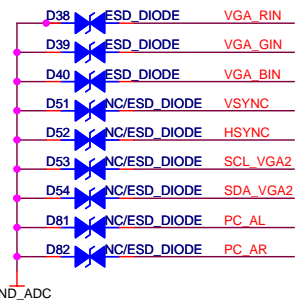
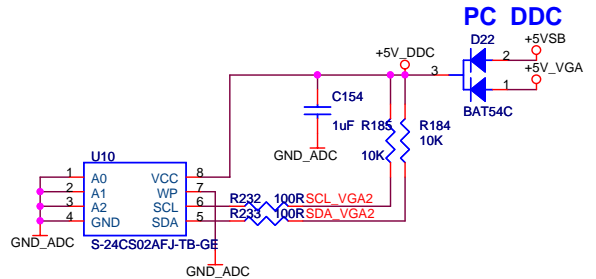
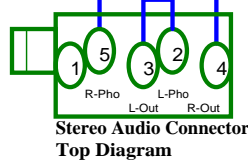
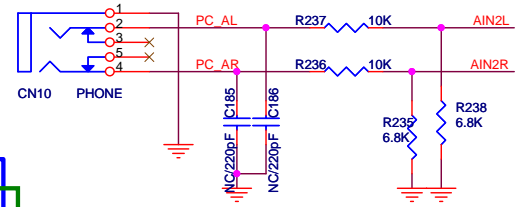
INPUT1



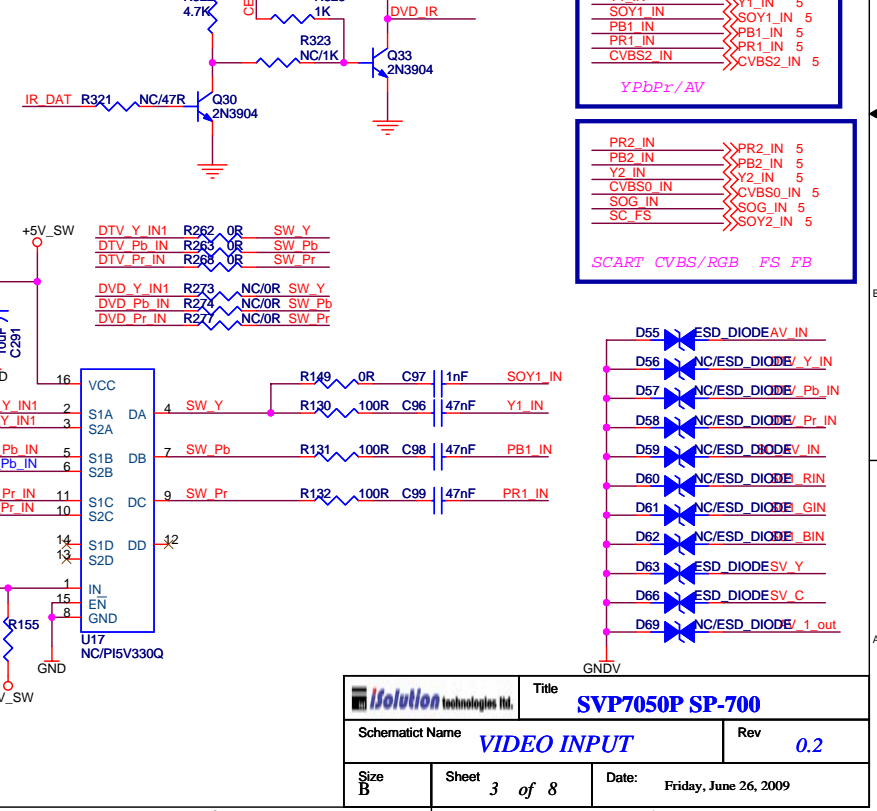
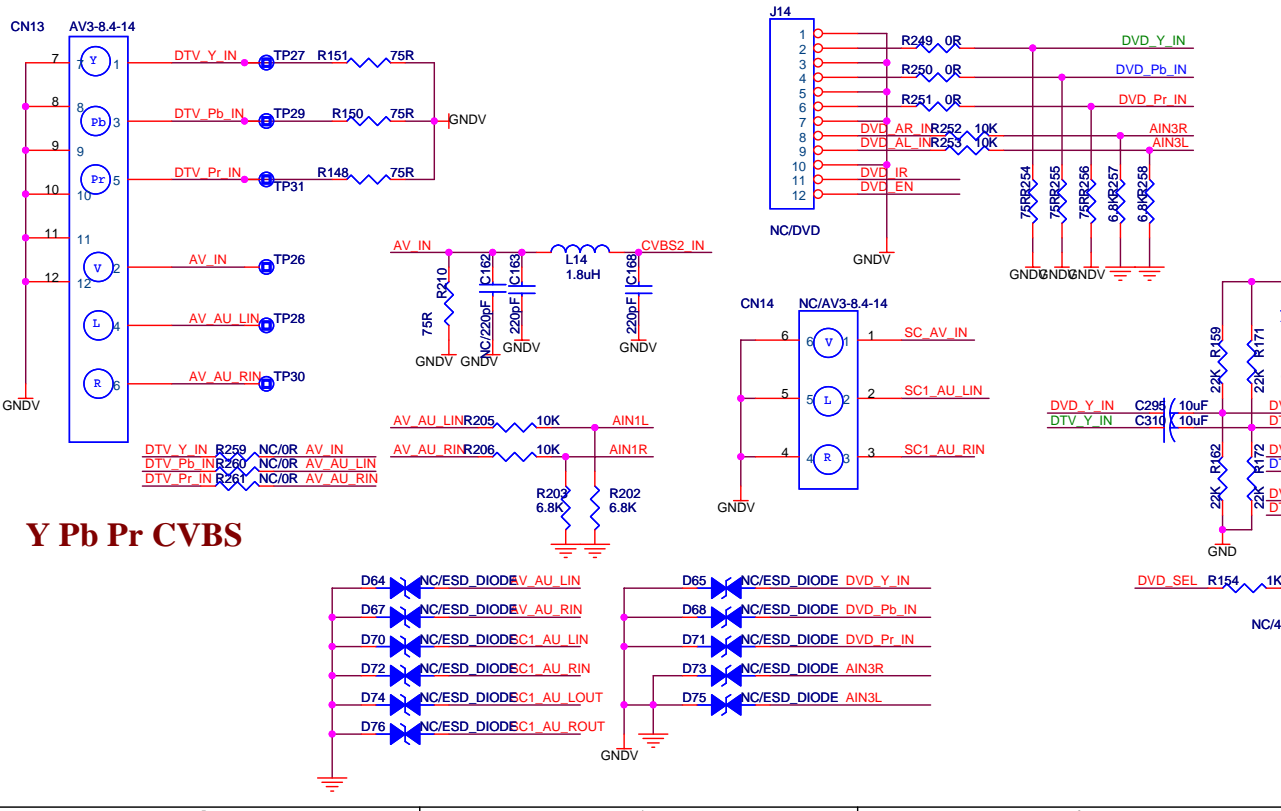
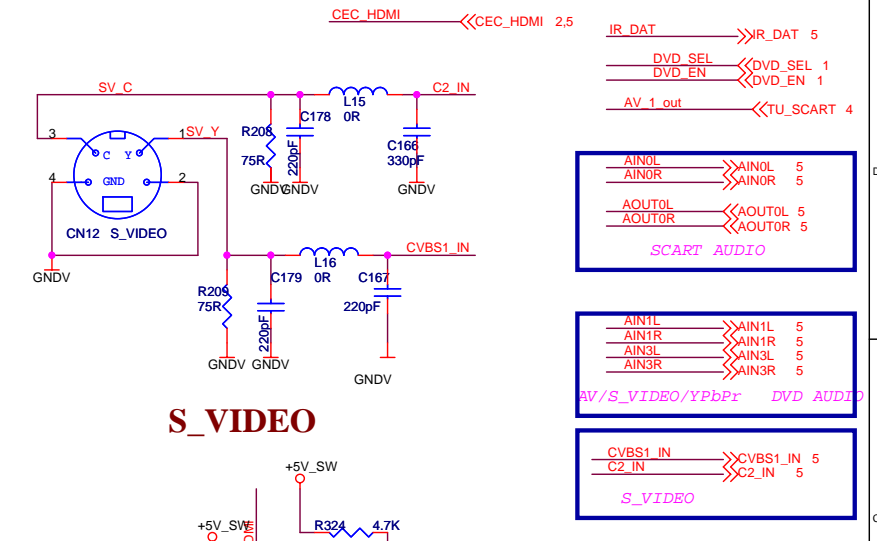
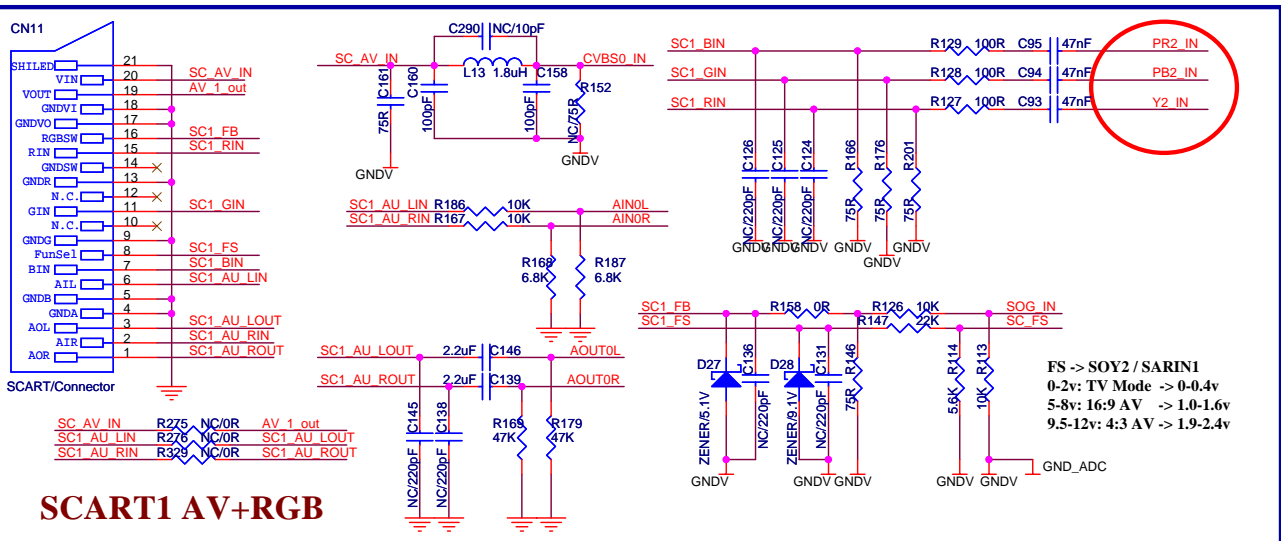
VGA Analog Input



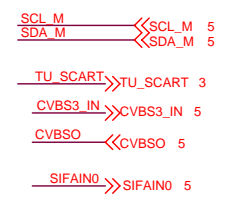
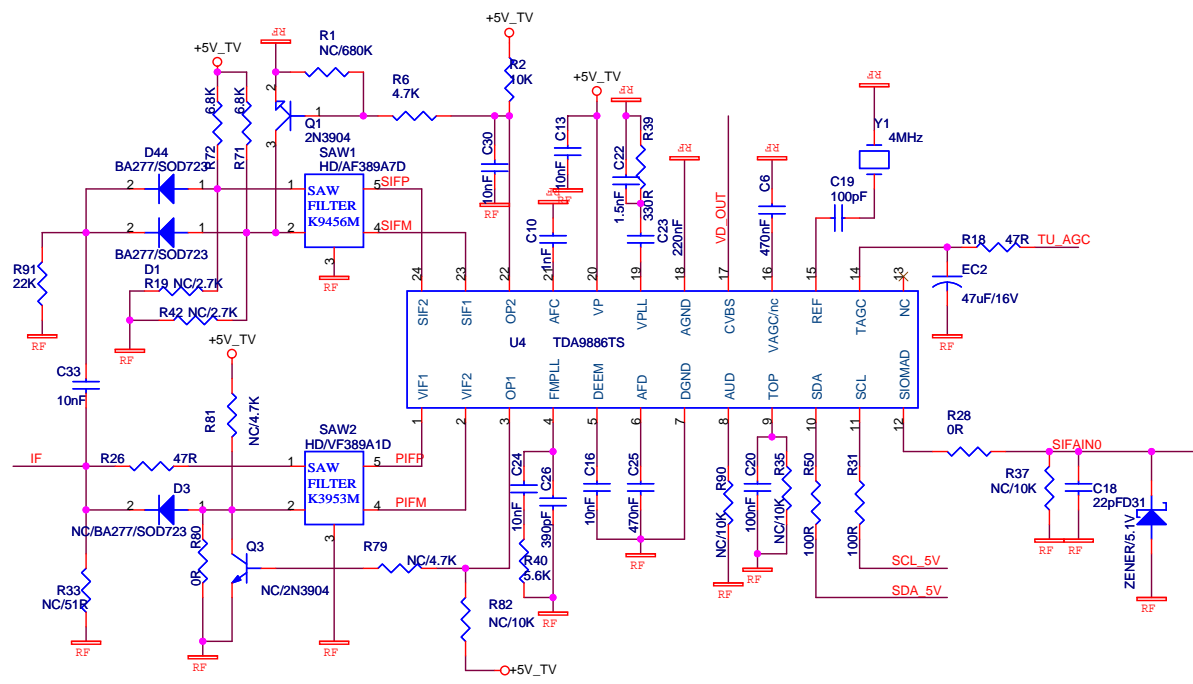
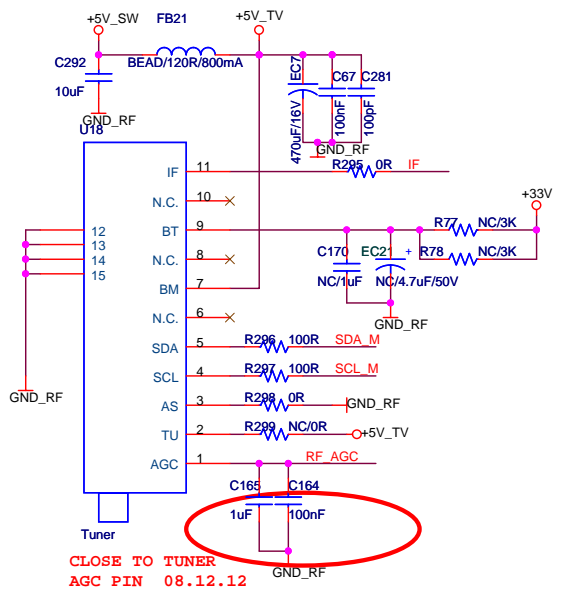
PC Audio Input



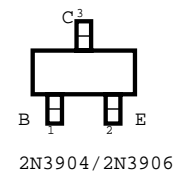
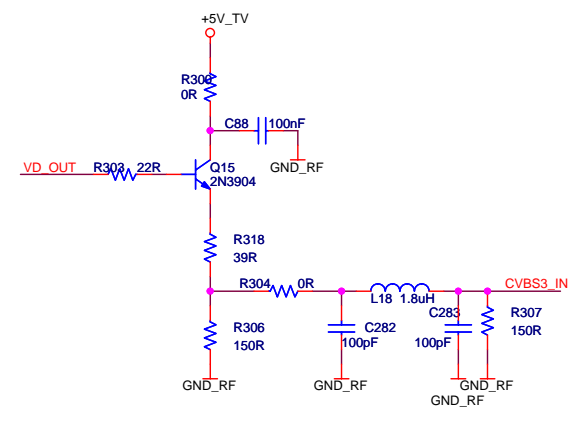
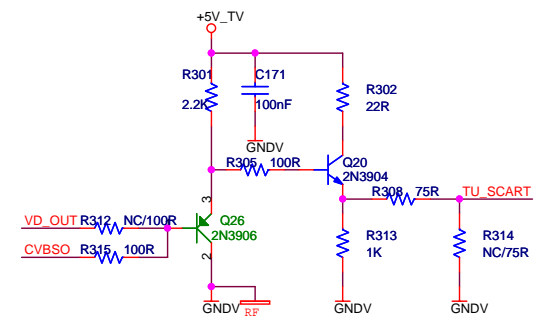
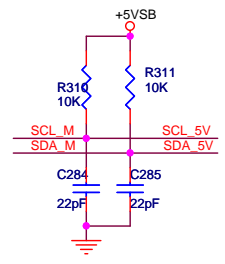
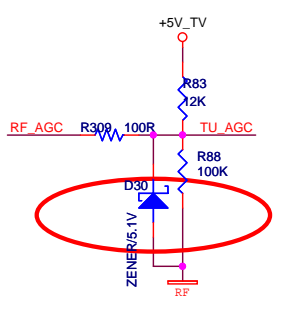
		Title SVP7050P SP-700	
Schematic Name HDMI&VGA INPUT		Rev 0.2	
Size B	Sheet 2 of 8	Date: Tuesday, May 12, 2009	



		Title SVP7050P SP-700	
Schematic Name VIDEO INPUT		Rev 0.2	
Size B	Sheet 3 of 8	Date: Friday, June 26, 2009	

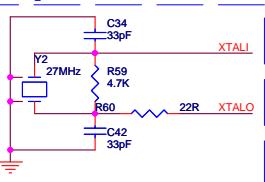


IIC level shift circuit

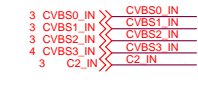
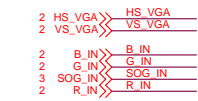
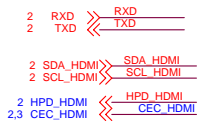


		Title	
		SVP7050P SP-700	
Schematic Name		Rev	
Tuner		0.2	
Size	Sheet	Date:	
B	4 of 8	Friday, June 26, 2009	

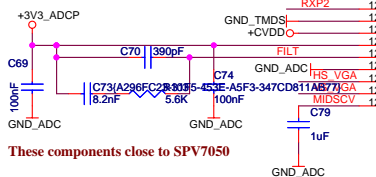
Crystal Circuit



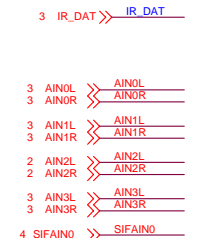
These components close to SPV7050
 If X1 CL=12pF, then
 C38=C46=15pF



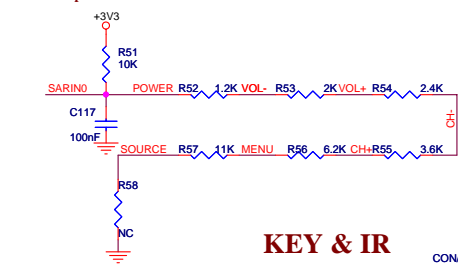
HDMI Input



These components close to SPV7050



These components close to SPV7050

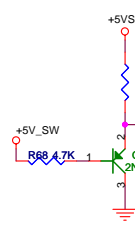
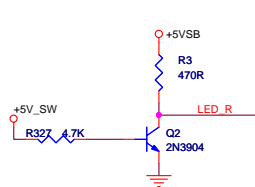
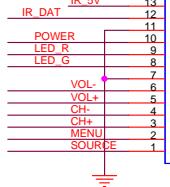
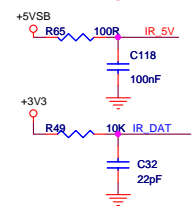


VGA/YUV Input

Video Input

Audio Input

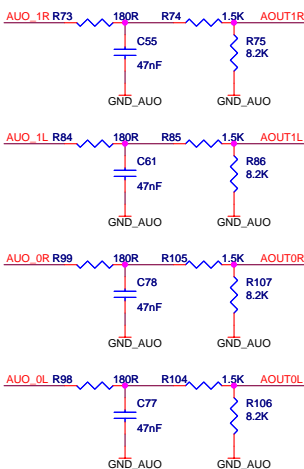
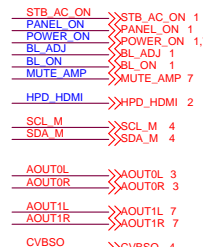
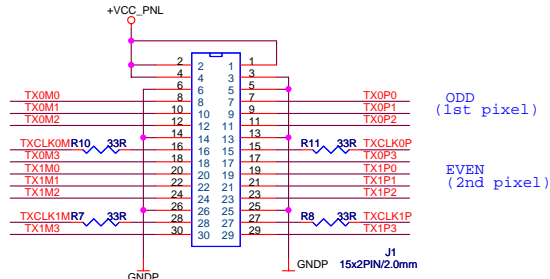
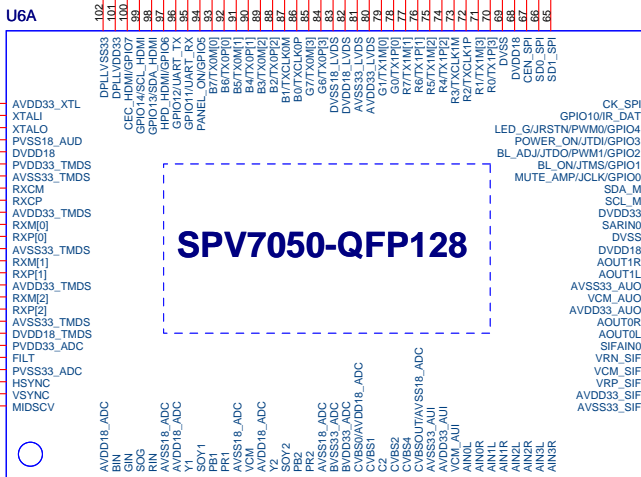
KEY & IR



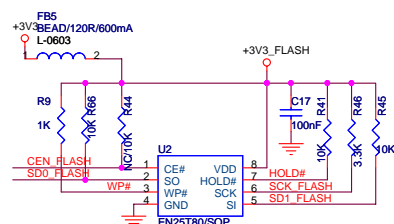
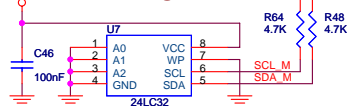
LVDS Output



MPU & SPI



EEPROM

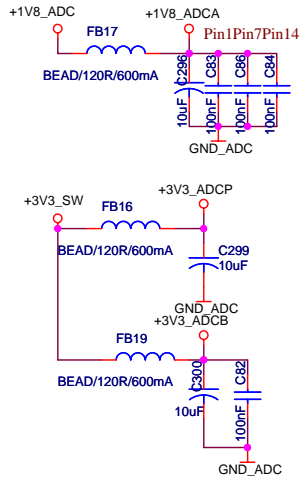


Flash Interface

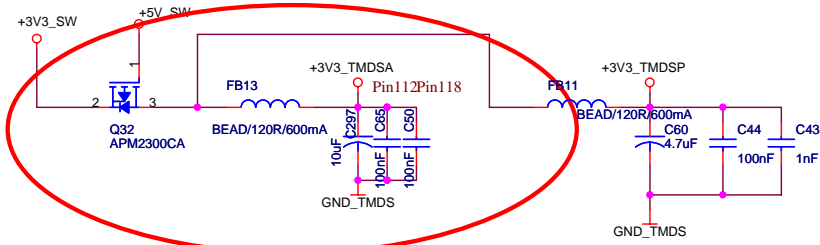
*Short these ground planes on PCB

		Title SVP7050P SP-700	
Schematic Name SVP7050P		Rev 0.2	
Size Custom	Sheet 5 of 8	Date: Monday, May 25, 2009	

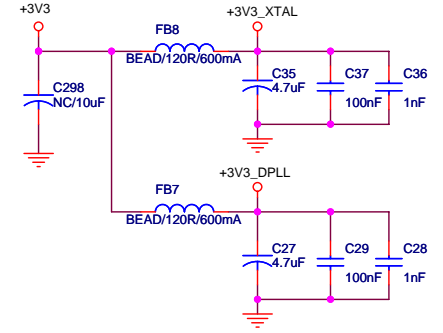
ADC POWER/GND (1.8V/3.3V)



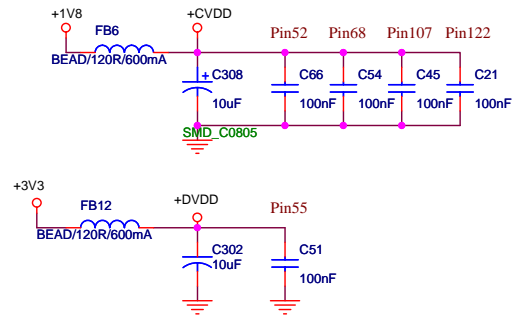
TMDS POWER/GND (1.8V/3.3V)



XTAL POWER/GND (3.3V)

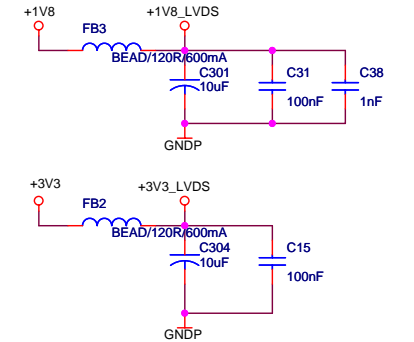


SOURCE POWER/GND (1.8V/3.3V)

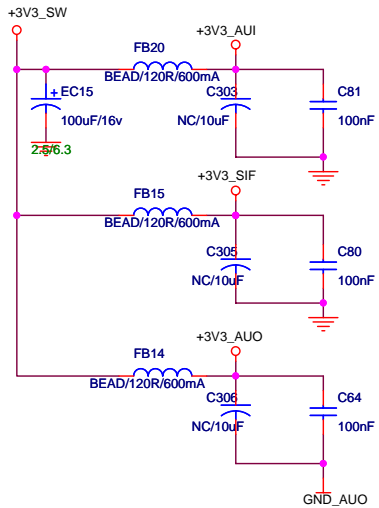


FB52-53 add for current measure only

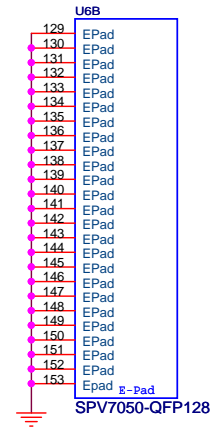
LVDS POWER/GND (3.3V)



SARADC/SIF/AUDIO POWER/GND (3.3V)



SPV7050 E-Pad

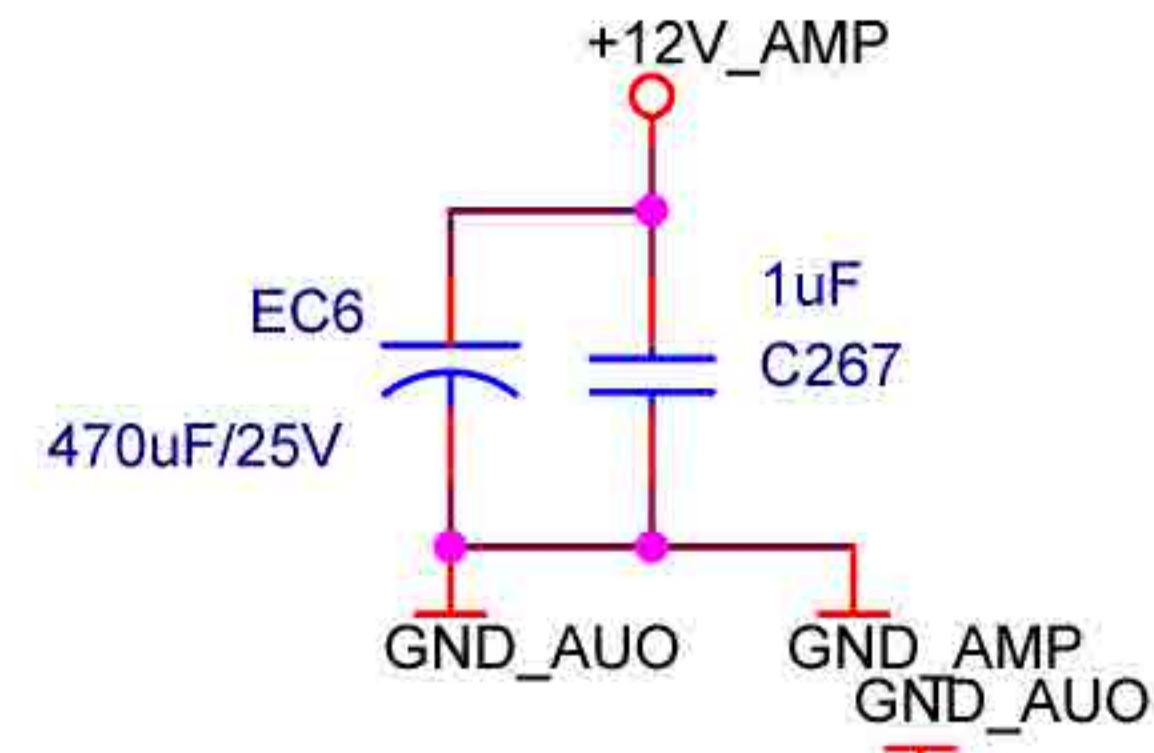
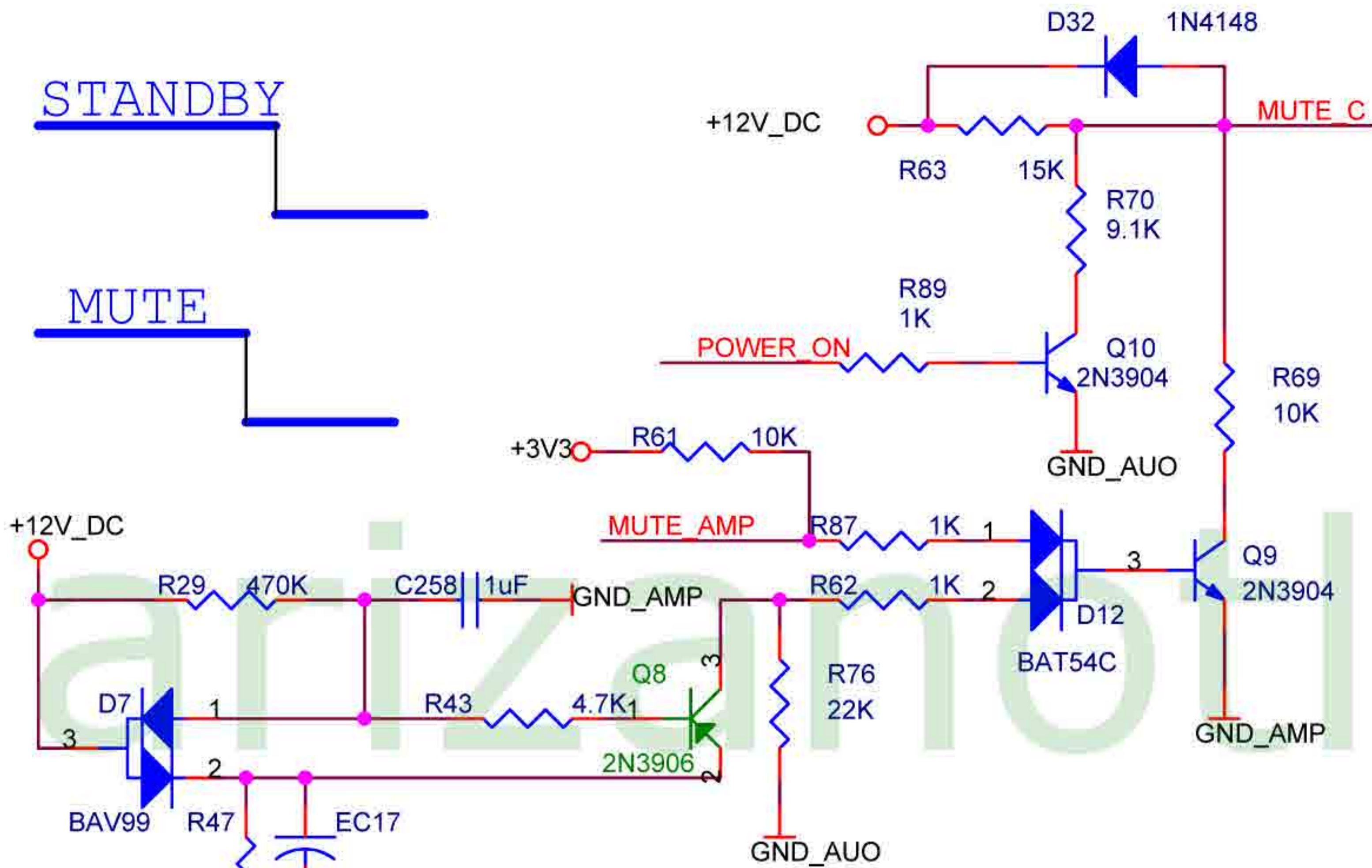


*Short these ground planes on PCB

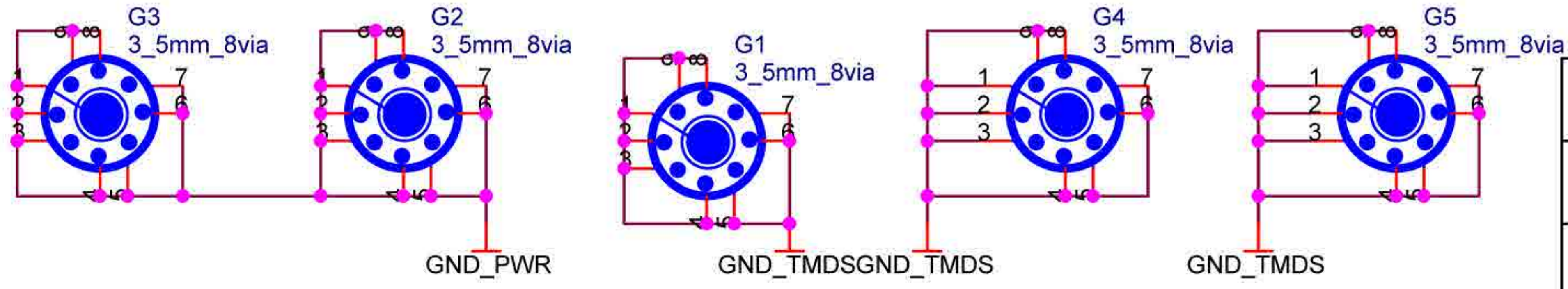
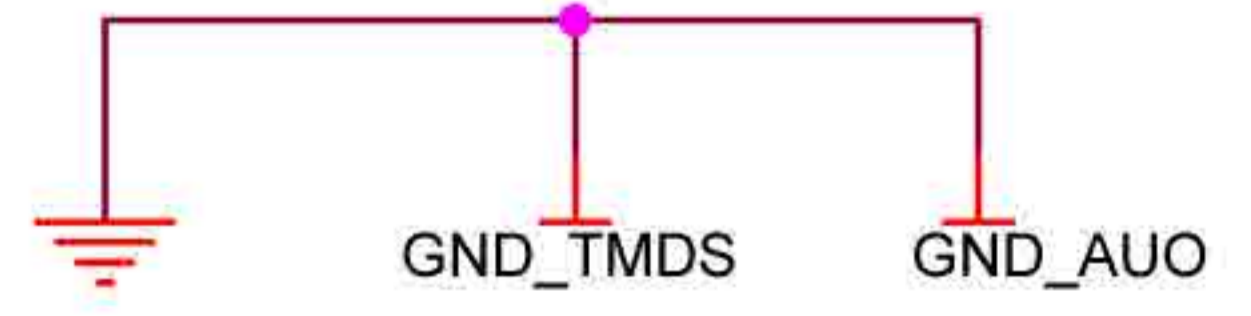
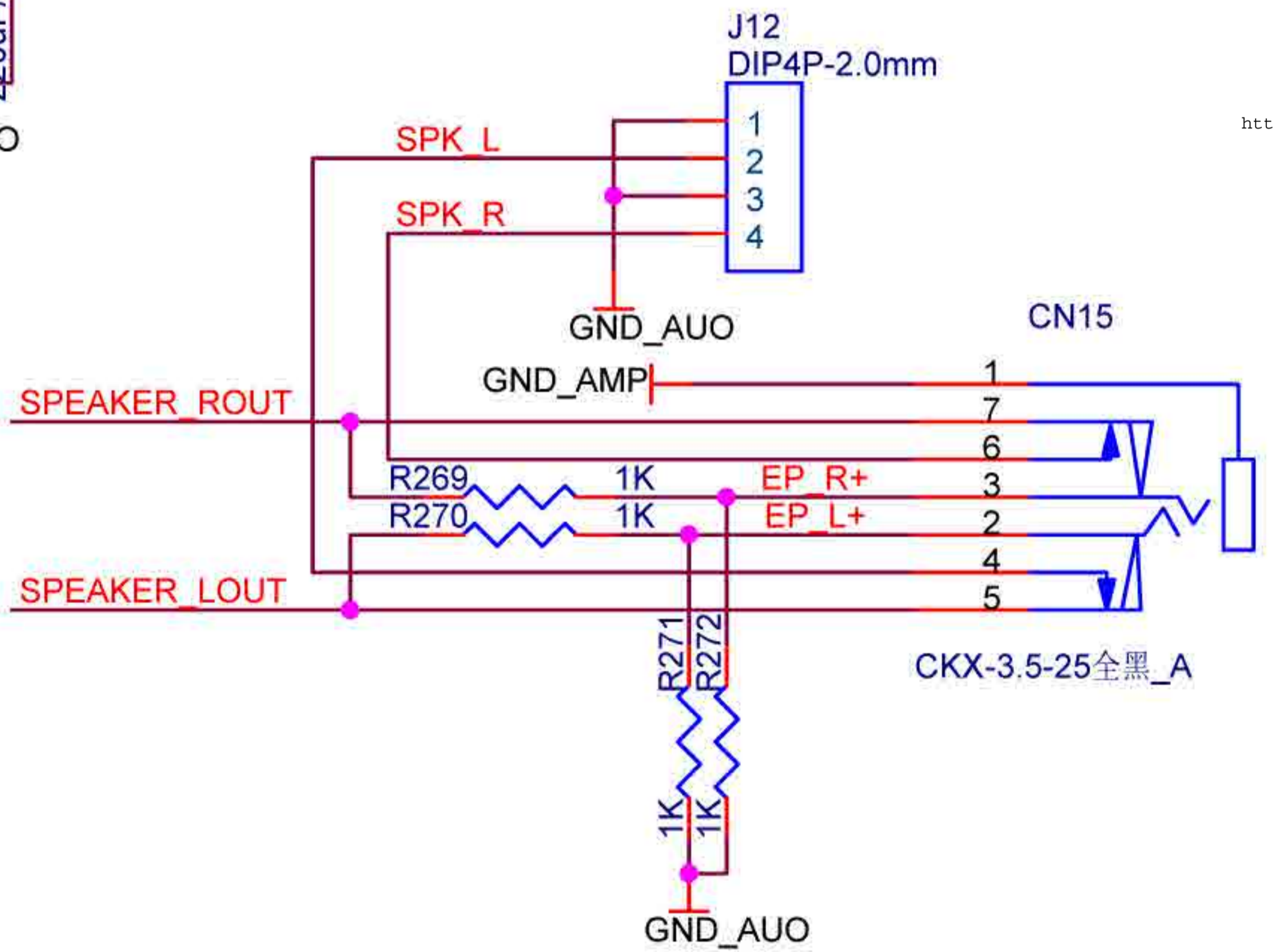
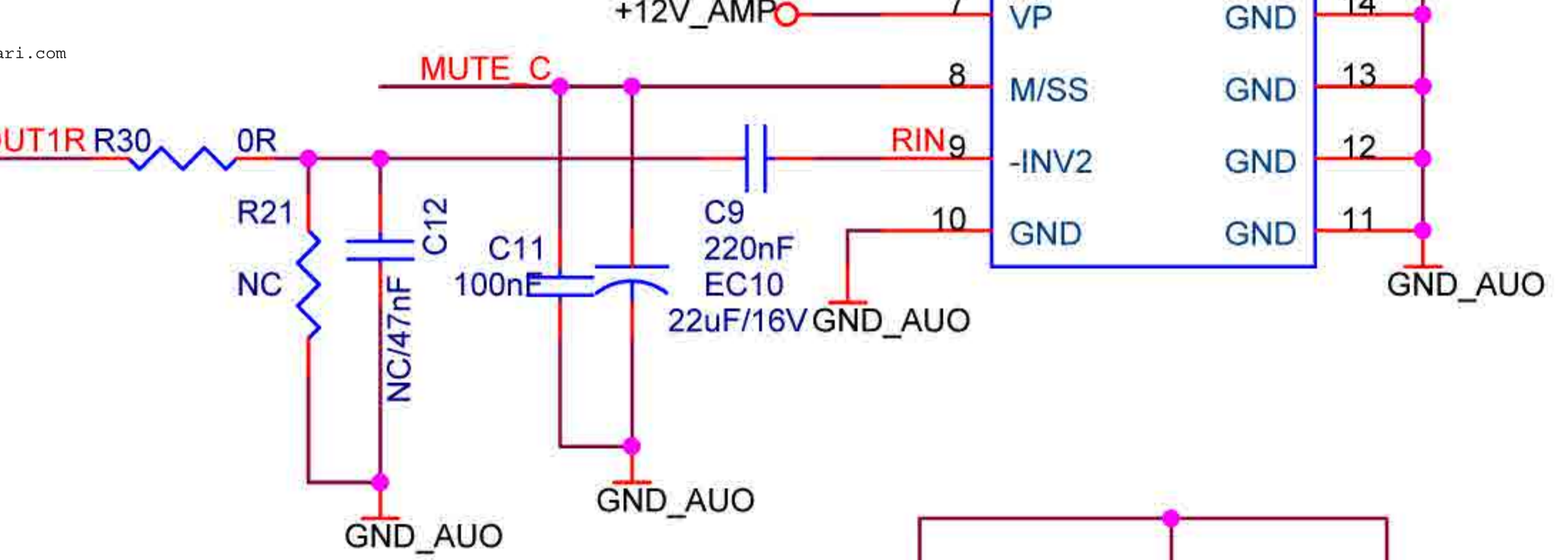
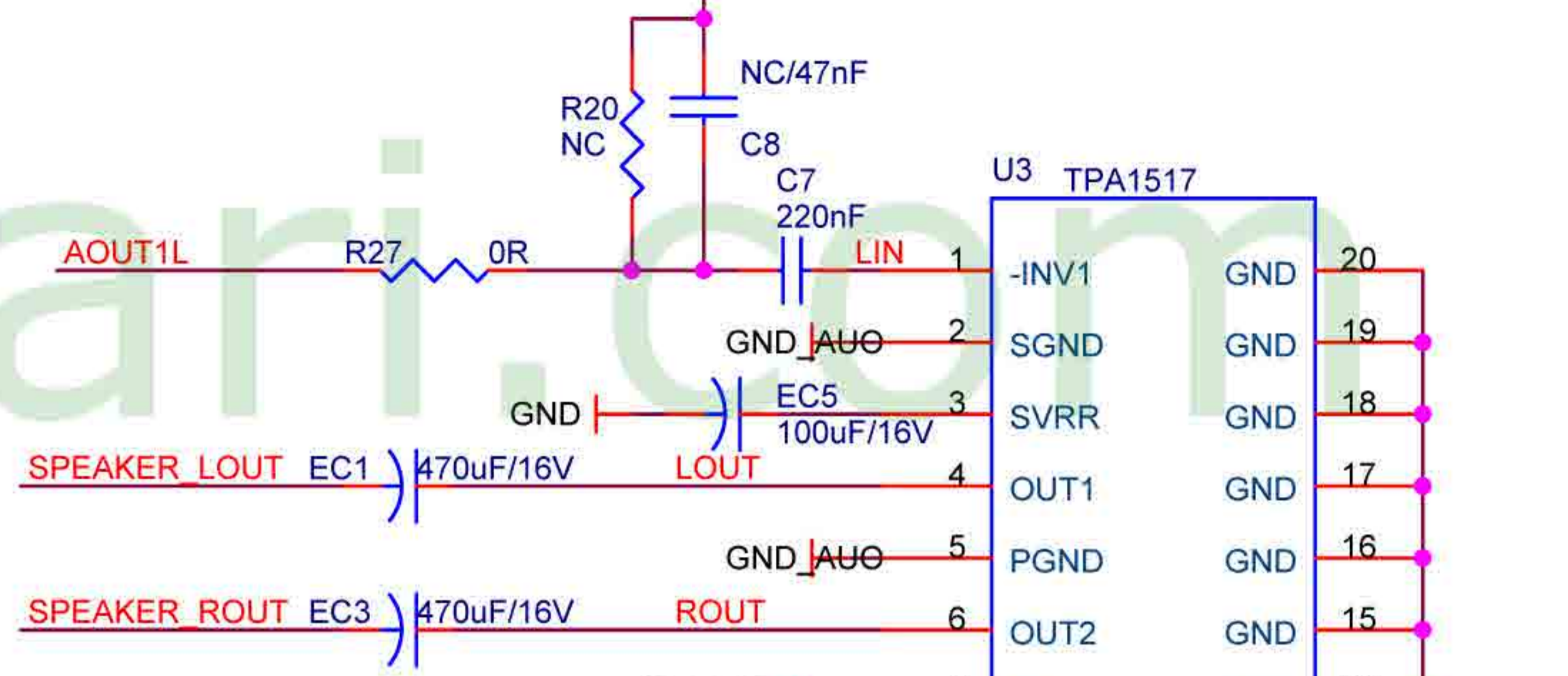
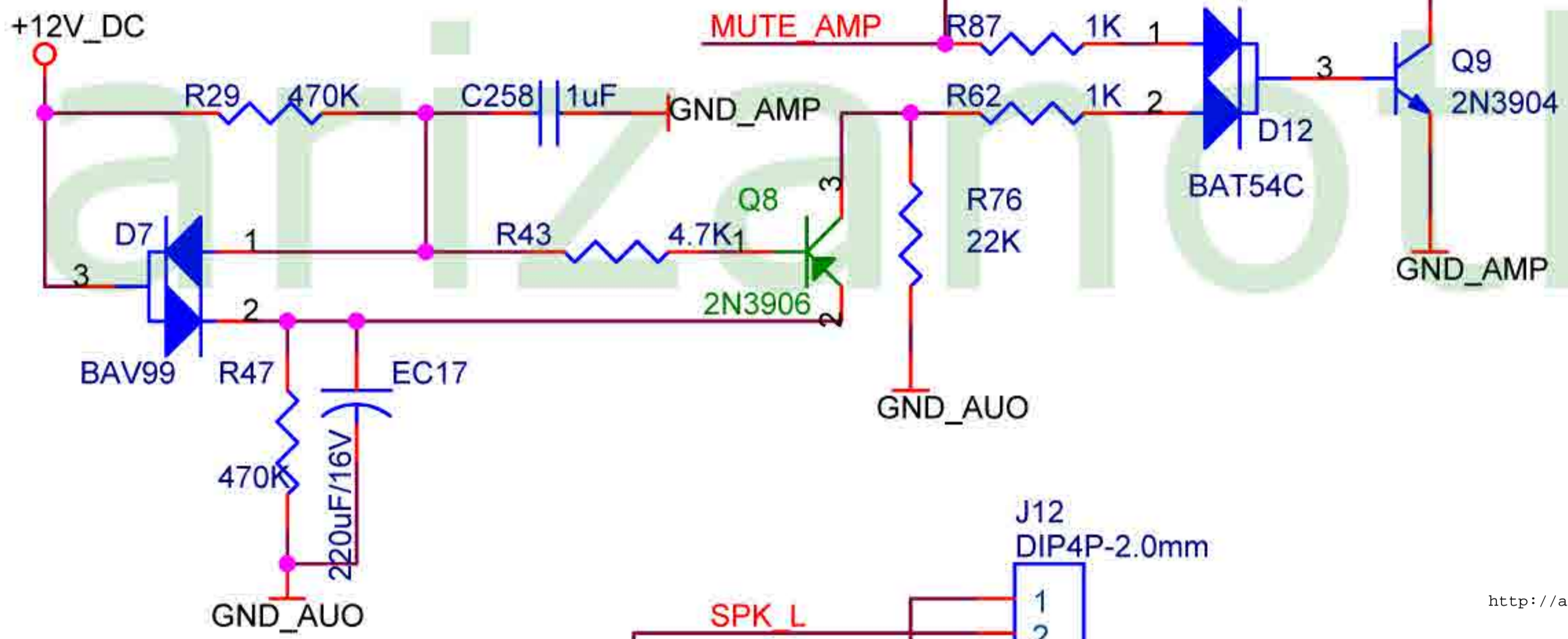
i1olution technologies Ltd.		Title	
		SVP7050P SP-700	
Schematic Name		Rev	
SVP7050P POWER		0.2	
Size	Sheet	Date:	
B	6 of 8	Tuesday, May 12, 2009	

STANDBY

MUTE



- AOUT1R << AOUT1R 5
- AOUT1L << AOUT1L 5
- MUTE_AMP << MUTE_AMP 5
- POWER_ON << POWER_ON 1,5



		Title SVP7050P SP-700	
Schematic Name AMP.		Rev 0.2	
Size A	Sheet 7 of 8	Date: Friday, June 12, 2009	