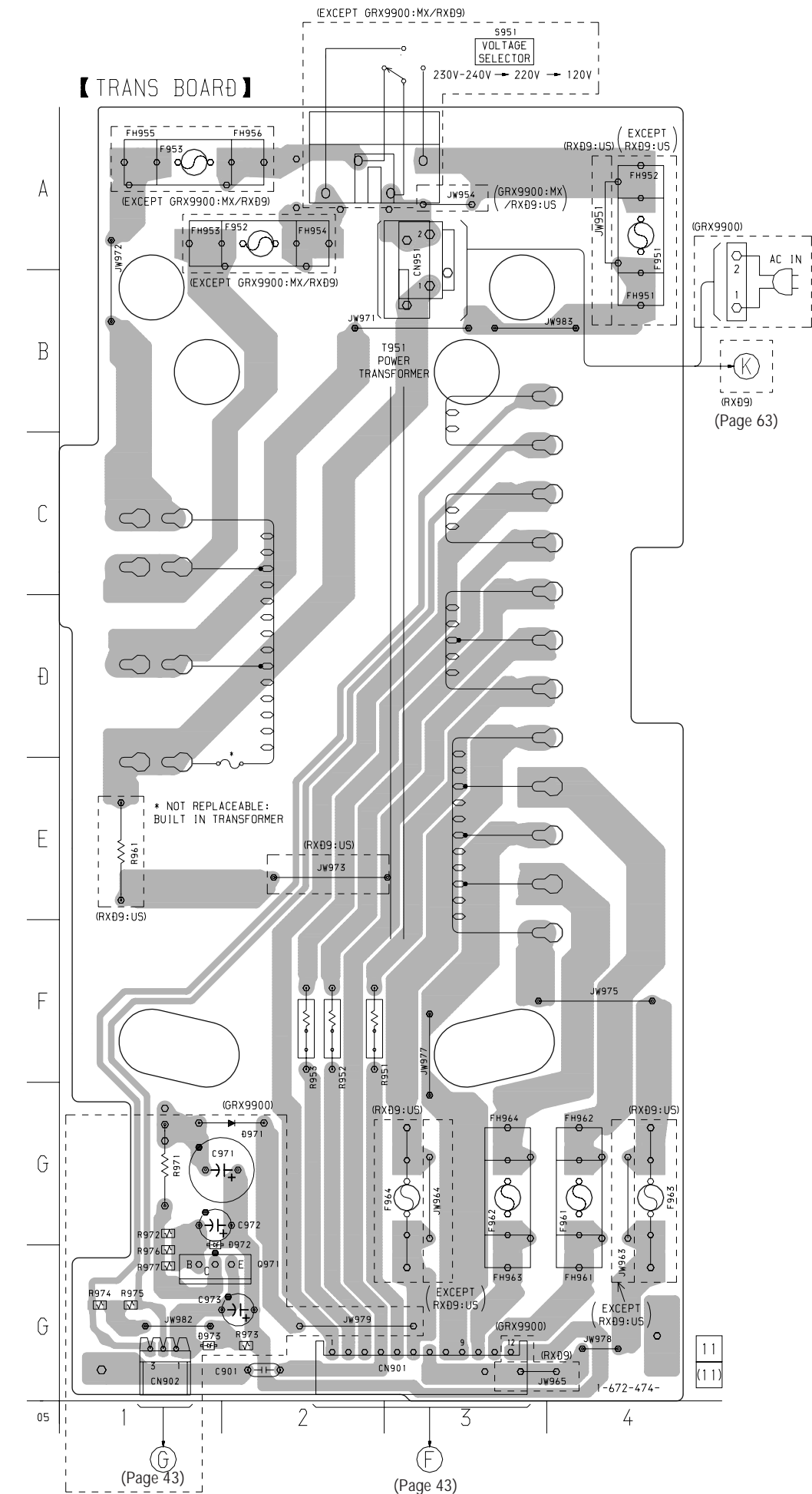
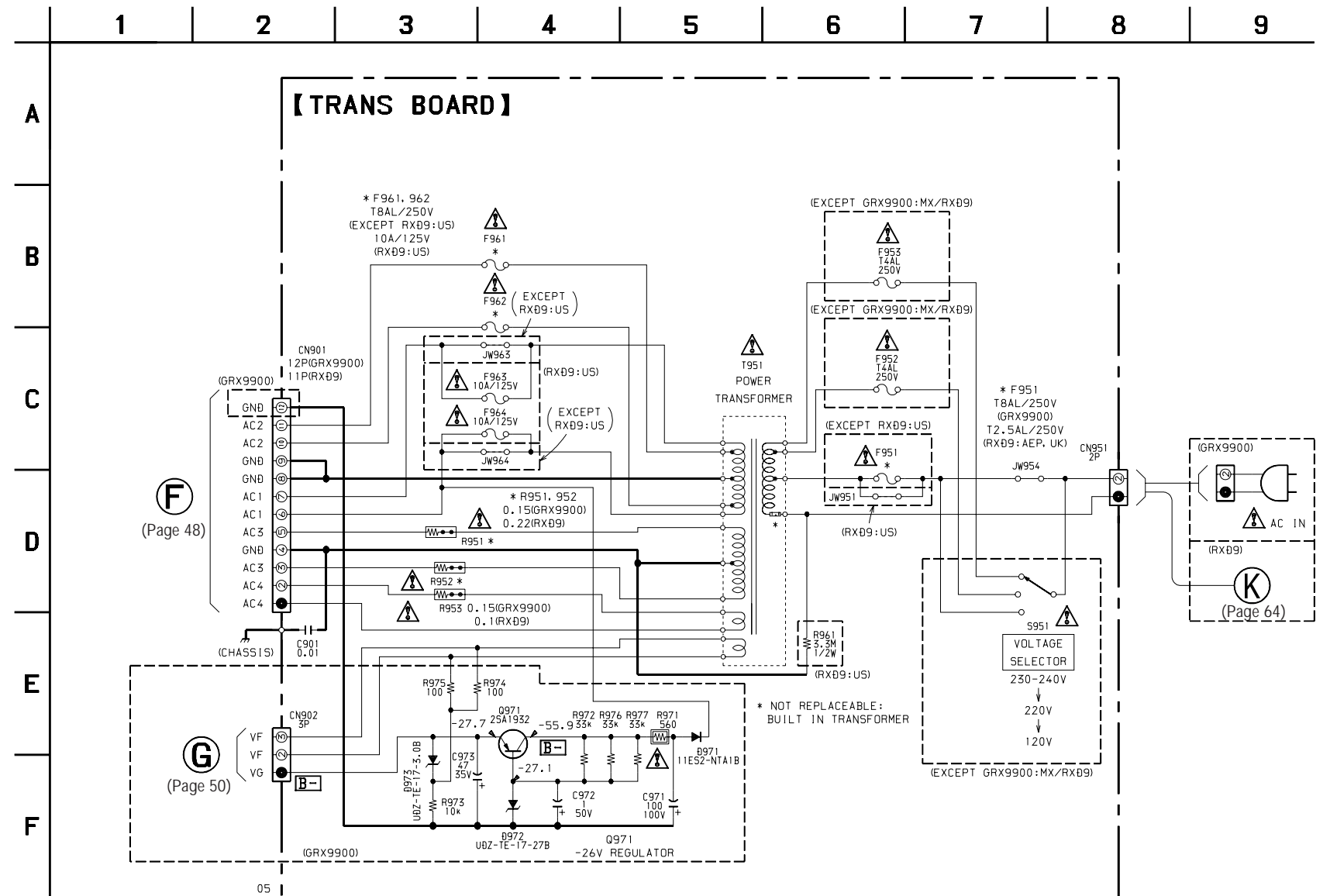


7-23. PRINTED WIRING BOARD – TRANS Board –

• See page 28 for Circuit Boards Location.



7-24. SCHEMATIC DIAGRAM – TRANS Board –



• Voltages are dc with respect to ground under no-signal (detuned) conditions.
no mark : TUNER (FM/AM)

The components identified by mark Δ or dotted line with mark Δ are critical for safety.
Replace only with part number specified.

• Semiconductor Location

Ref. No.	Location
D971	G-2
D972	G-1
D973	G-1
Q971	G-1