

ESG002

- 2.5k
- 0
- 1
- 2

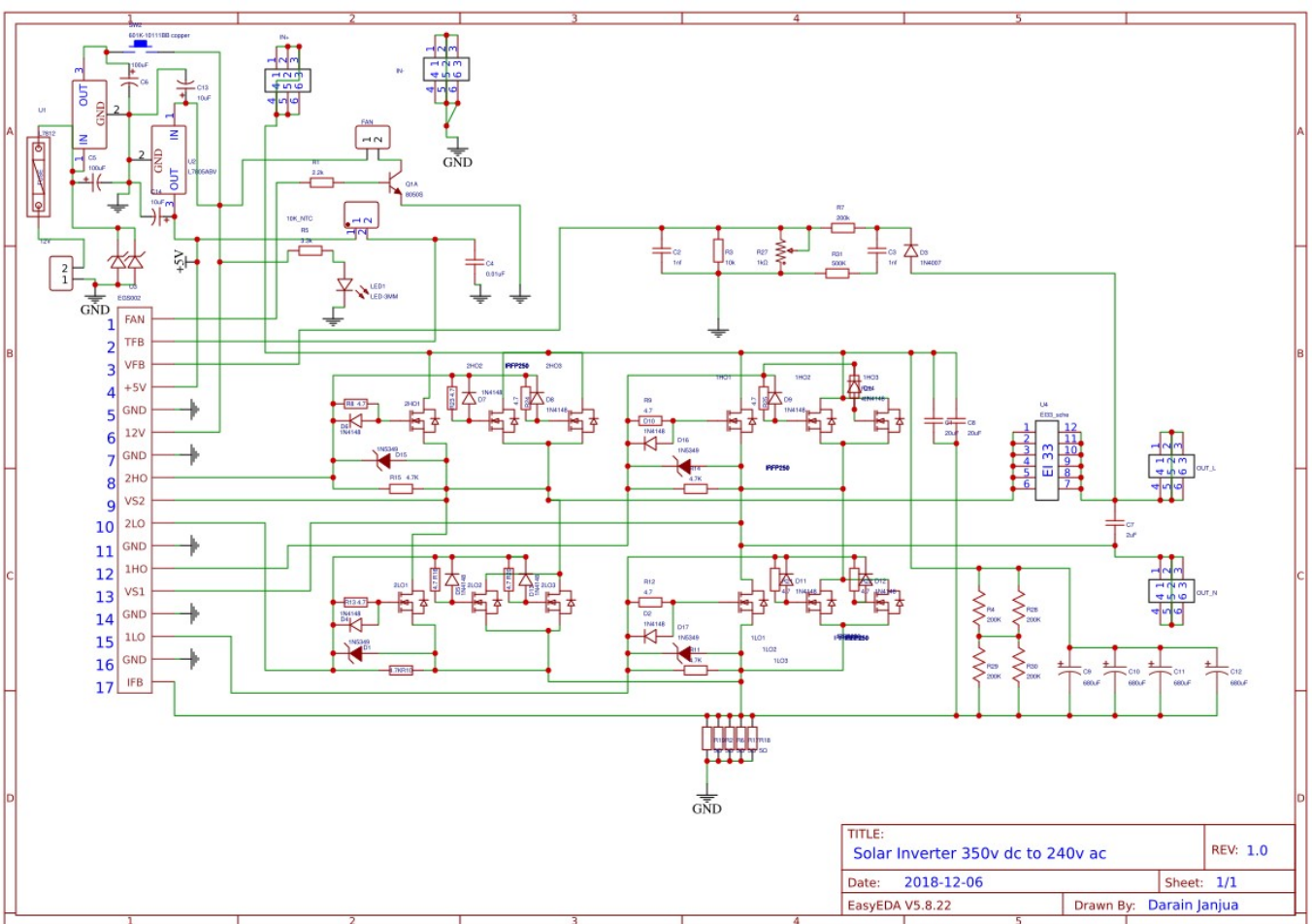
Update time : 2023-08-15 07:22:28
Creation time : 2020-08-17 20:20:55

Description

ESG002 (400v DC @ 10 to 15 Amp) to (220v RMS) (50 Hz)

- 1: Sine Wave
- 2: Over Volt Protection
- 3: Over Current Protection
- 4: Temperature Controlled Fan
- 5: Soft Start

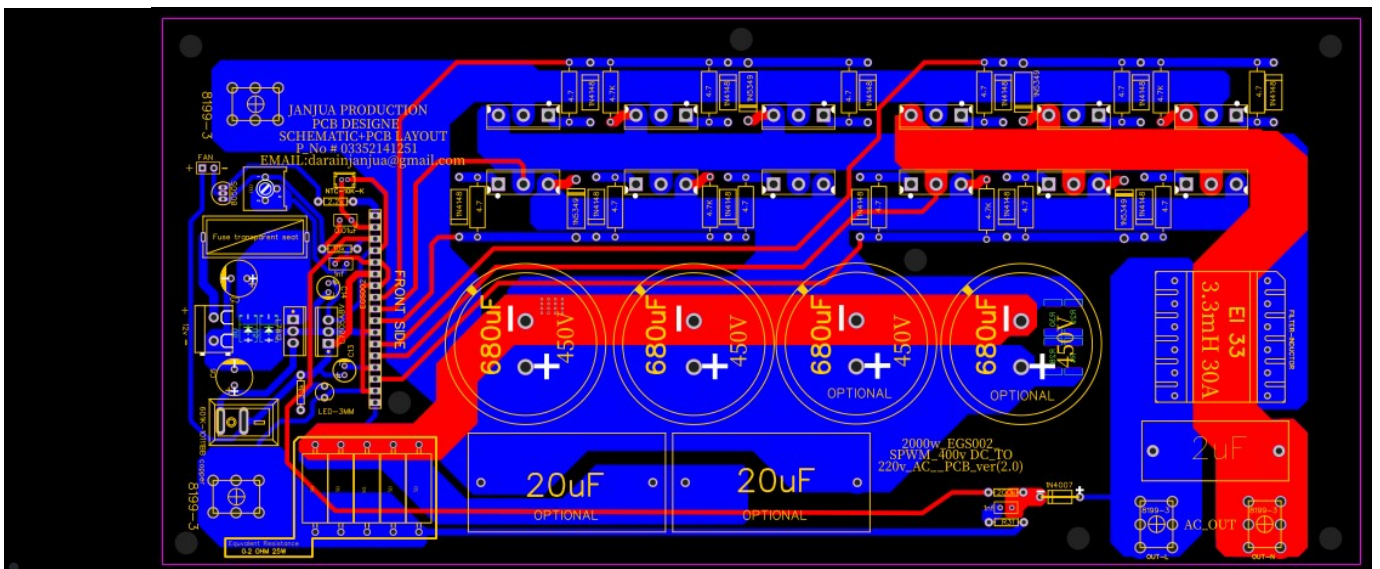
Design Drawing schematic diagram



Sheet_1

[Open in Editor](#)

PCB



EGS002

D	Name	Designator	Footprint	Quantity
1	IRFP250	1HO1,1HO2,1HO3,1LO1,1LO2,1LO3,2HO1,2HO2,2HO3,2LO1,2LO2,2LO3	TO-247AC-3_L15.8-W5.0-P5.46-L	12
2	1.25T-1-2A_C2324	10K_NTC	1.25T-1-2A	1
3	12v	12V	CONN-TH_2P-P5.08	1
4	20uF	C1,C8	CAP-TH_L43.0-W21.5-P37.50-D1.0	2
5	1nf	C2,C3	RAD-0.1	2
6	0.01uF	C4	RAD-0.1	1
7	100uF	C5,C6	CAP-TH_BD8.0-P3.50-D0.6-FD	2
8	2uF	C7	CAP-TH_L32.0-W13.0-P27.50-D0.8	1
9	680uF	C9,C10,C11,C12	CAP-TH_BD35.0-P10.00-D2.3-FD	4
10	10uF	C13,C14	CAP-TH_BD5.0-P2.00-D0.8-FD	2
11	1N5349	D1,D15,D16,D17	DO-27_BD3.5-L8.6-P12.60-D1.3-RD	4
12	1N4148	D2,D4,D5,D6,D7,D8,D9,D10,D11,D12,D13,D14	RL207	12
13	1N4007	D3	DO-41_BD2.4-L4.7-P8.70-D0.9-RD	1
14	Fuse transparent seat	FUSE	FUSE-TH_L22.6-W9.0	1
15	8199-3	IN+,IN-,OUT_L,OUT_N	TERMINALS_C238179	4
16	LED-3MM	LED1	LED-3MM/2.54	1
17	FAN	P2	HDR-1X2/2.54	1
18	8050S	Q1A	TO-92(TO-92-3)	1
19	2.2k	R1	AXIAL-0.3	1
20	5Ω	R2,R6,R17,R18,R19	RES-TH_BD5.5-L15.0-P19.00-D0.8	5
21	10k	R3	AXIAL-0.3	1
22	200K	R4,R28,R29,R30	R2512	4
23	3.3k	R5	AXIAL-0.3	1
24	200k	R7	AXIAL-0.3	1
25	4.7	R8,R9,R12,R13,R16,R20,R21,R22,R23,R24,R25,R26	RES-TH_BD3.3-L9.0-P13.00-D0.6	12
26	4.7K	R10,R11,R14,R15	RES-TH_BD3.3-L9.0-P13.00-D0.6	4
27	1kΩ	R27	RES-ADJ-TH_3P-L9.5-W9.5-P2.54-BR-BS	1

28	500K	R31	AXIAL-0.3	1
29	601K-10111BB copper	SW2	601K-10111BB COPPER	1
30	L7812	U1	TO-220(TO-220-3)	1
31	L7805ABV	U2	TO-220(TO-220-3)	1
32	EGS002	U3	EGS002	1
33	EI33_sche	U4	EI33_FOOT	1
34	P6SMB82A/TR13	U5,U6	SMB_L4.4-W3.6-LS5.4-RD	2